

# ViewBoard® 86" 4K Interactive Display

IFP8650-3

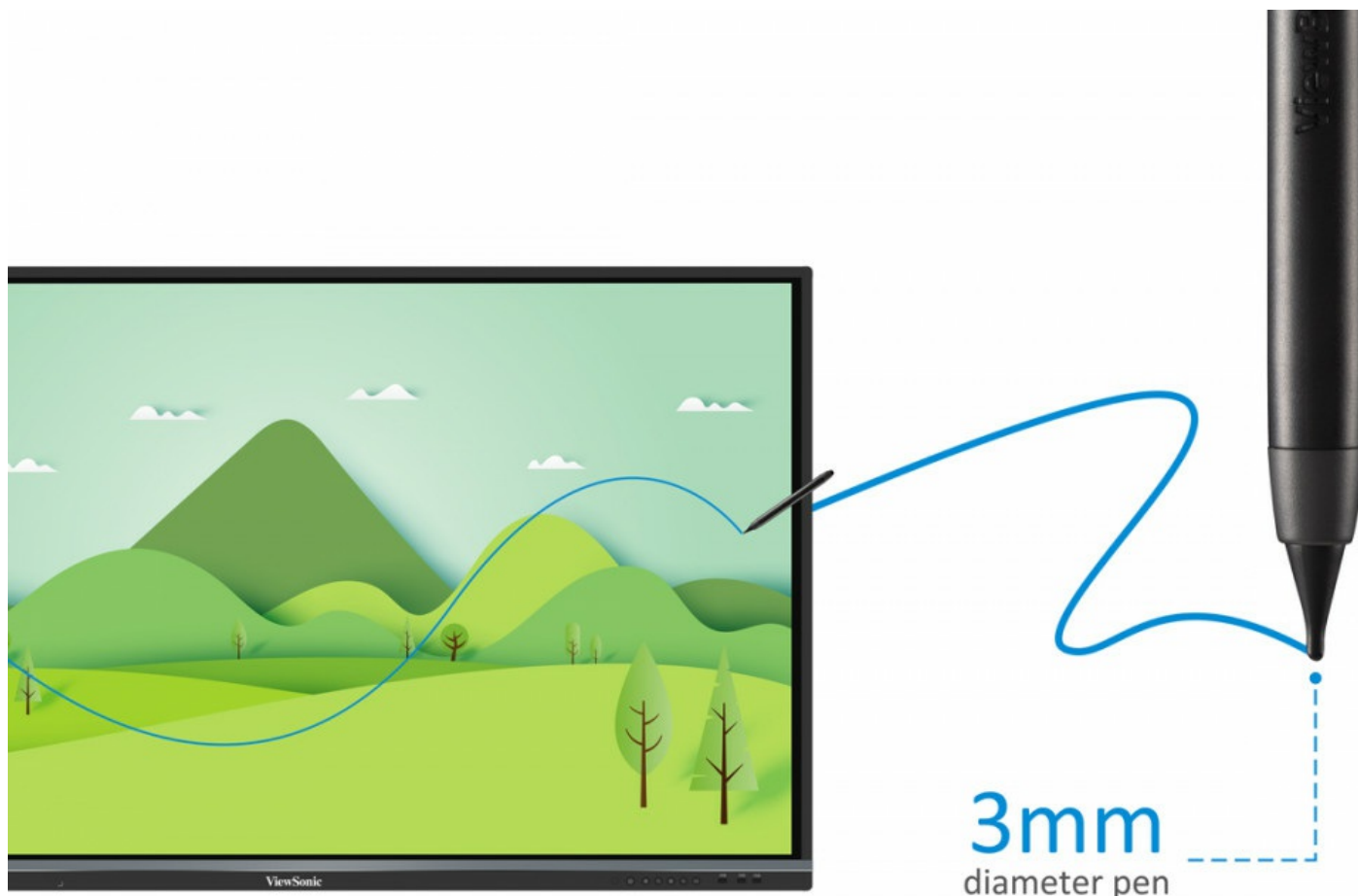


- Intuitive Interactive Interface and Eye-care Certified Display
- Synchronous Writing Performance with Dual Pens
- Lag-free, Pen-on-paper Writing Experience with Ultra Fine Touch Technology
- Native Whiteboarding Tool with built-in myViewBoard® App
- Wireless Content Sharing and 4-way Split Screen with ViewBoard® Cast App

For teachers in the modern classroom, the ViewBoard® IFP50 series has the most intuitive interactive interface. It keeps continuous interaction within the first vision area and keeps everything within comfortable reach. Additionally, it is an eye-care certified display with low blue light and flicker-free at all brightness levels. The ViewBoard® IFP50 series further stands out with synchronous writing performance. You can write smoothly, with the pen that serves as an extension of your fingertips, and simultaneously with the equipped dual pens of different colors and thicknesses. The native built-in whiteboarding tool, myViewBoard®, further helps visualize your ideas with ease. The ViewBoard® IFP50 series is further complimented by wireless content sharing. Students can share their screens to the ViewBoard and vice versa with the built-in ViewBoard® Cast app. It is not limited to one-on-one presentation either. Teachers can advance to do group activities with the 4-way split screen display. Whether you've experienced good or lackluster classroom interaction in the digital whiteboarding world, the ViewBoard® IFP50 series will now allow you to work effortlessly in the classroom.

## UFT Technology

Ultra Fine Touch Technology produces a lag-free, pen-on-paper writing experience. Writing accuracy is greatly improved and student-teacher interaction flows more naturally thanks to real-time response rates, dual-pen recognition and our new 3mm tipped pens.



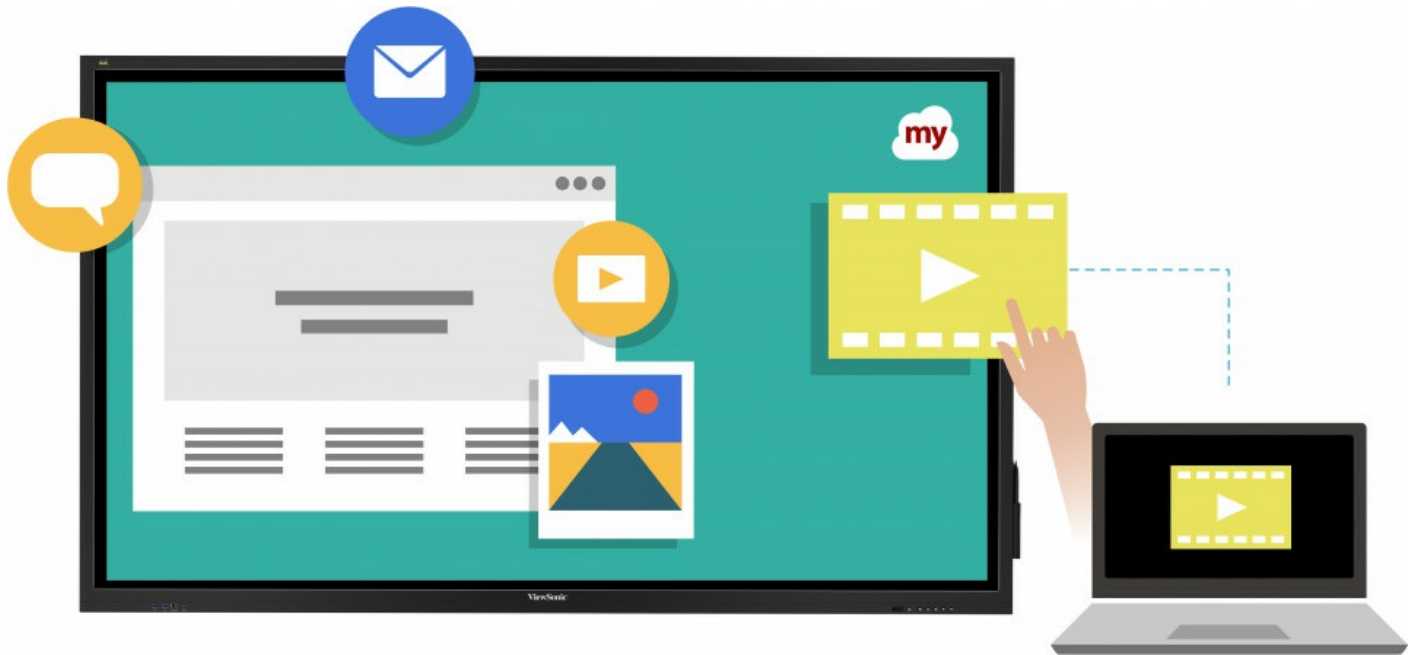
## Dual-Pen

Automatically detect pen diameter (8mm & 3mm) and write simultaneously with different colours and thicknesses.



## Full Native Performance on ViewBoard OS

Built-in myViewBoard® digital whiteboard software to collaborate on the go.



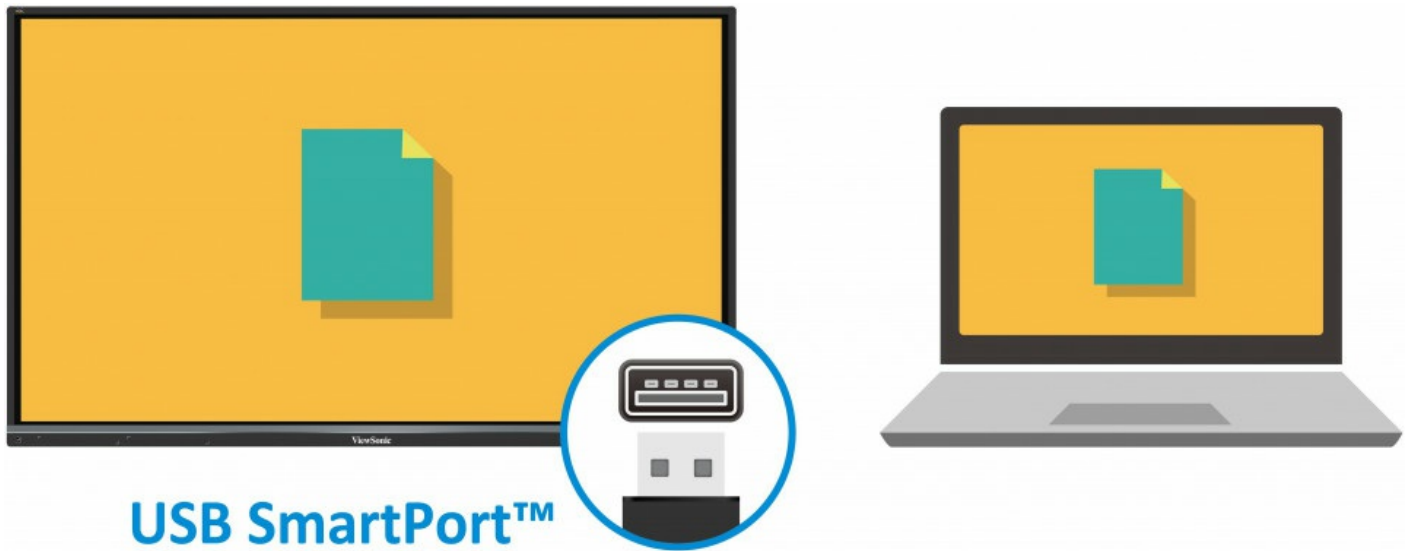
## 4-way Split Screen

4-way split-screen content sharing with built-in ViewBoard® Cast software.



## Shared USB Ports

SmartPort™ shared front USB ports for internal & external PCs.



## Stereo Sound

2.1 Stereo sound with a built-in subwoofer.



## Faster Internet

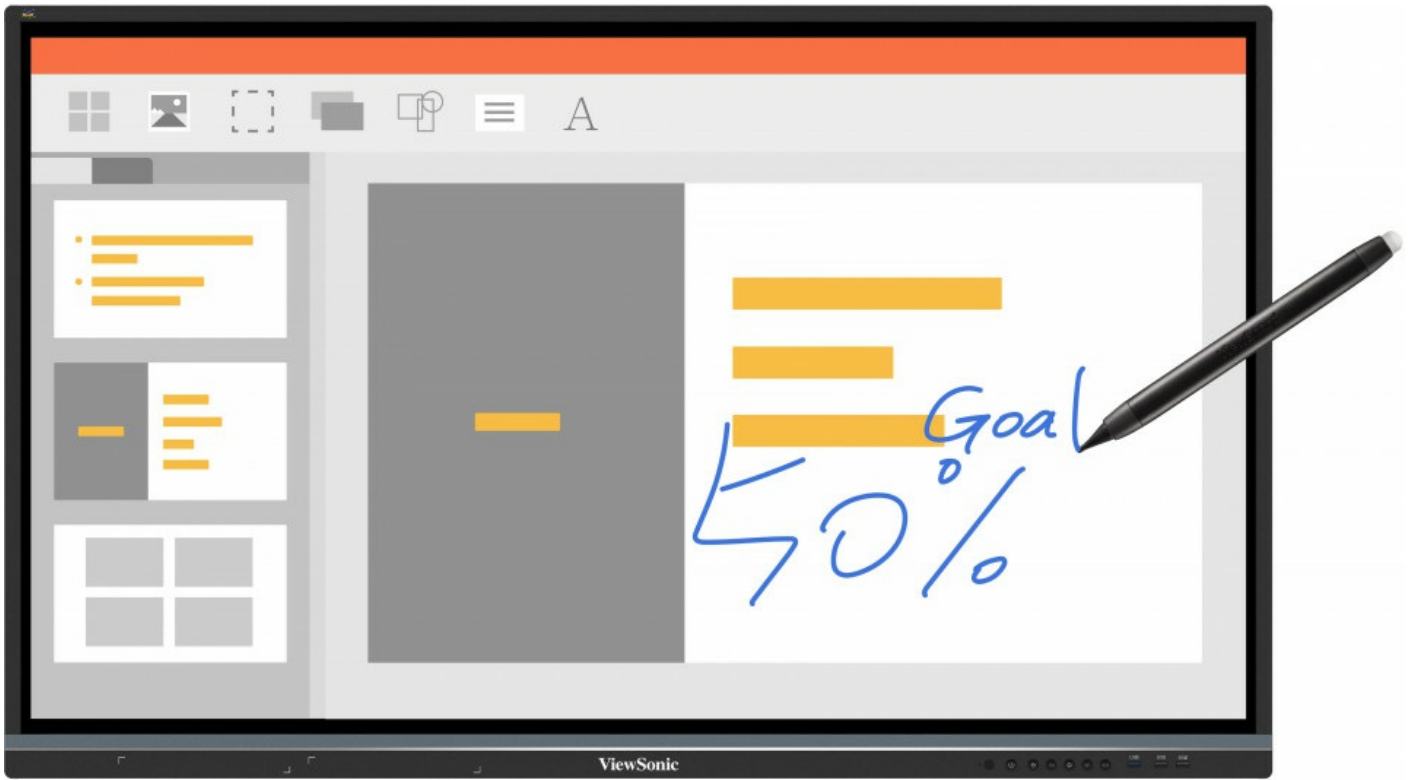
LAN sharing with slot-in PC provides a faster, more powerful internet connection.

## LAN Share



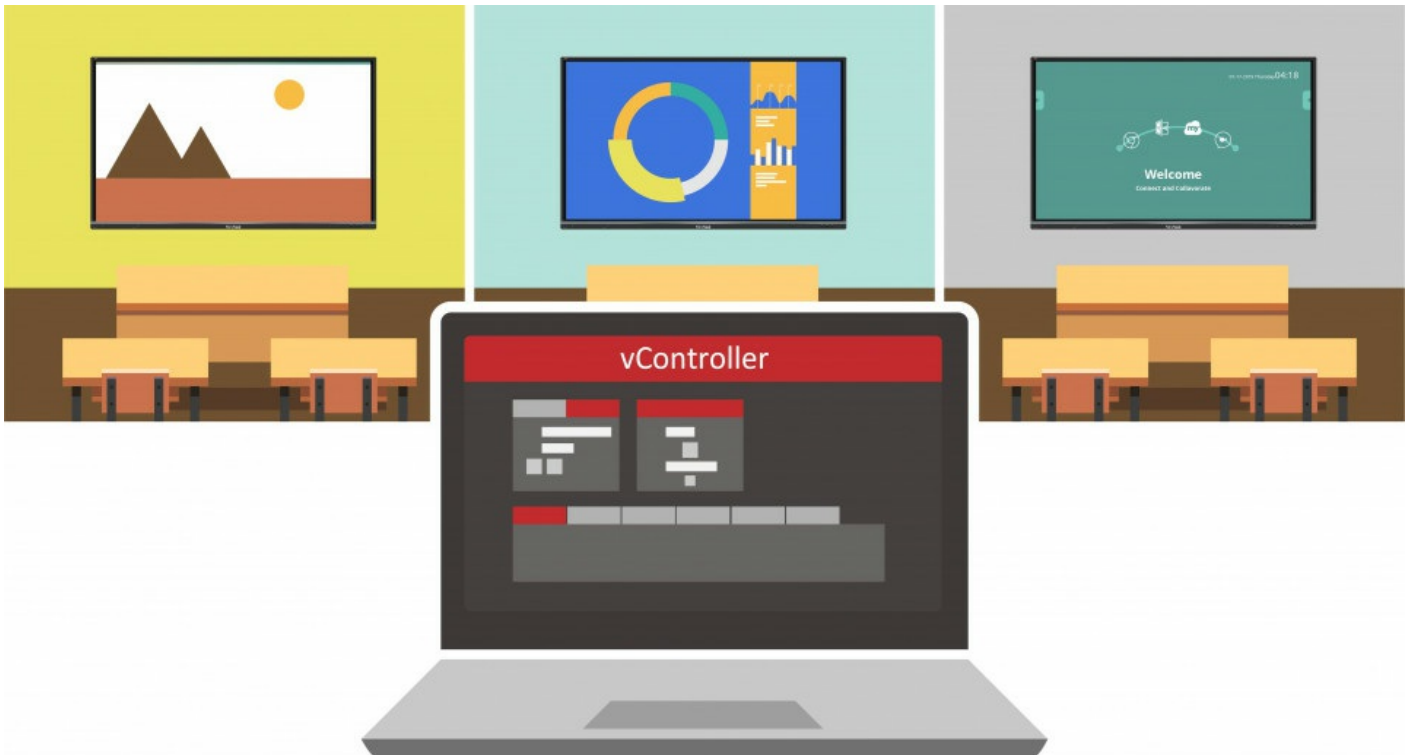
## Object Recognition and Windows Ink Compatible

Make annotations, write and draw on the whiteboard, Office365 or Windows Ink. Therefore your meetings will be more collaborative and interactive.



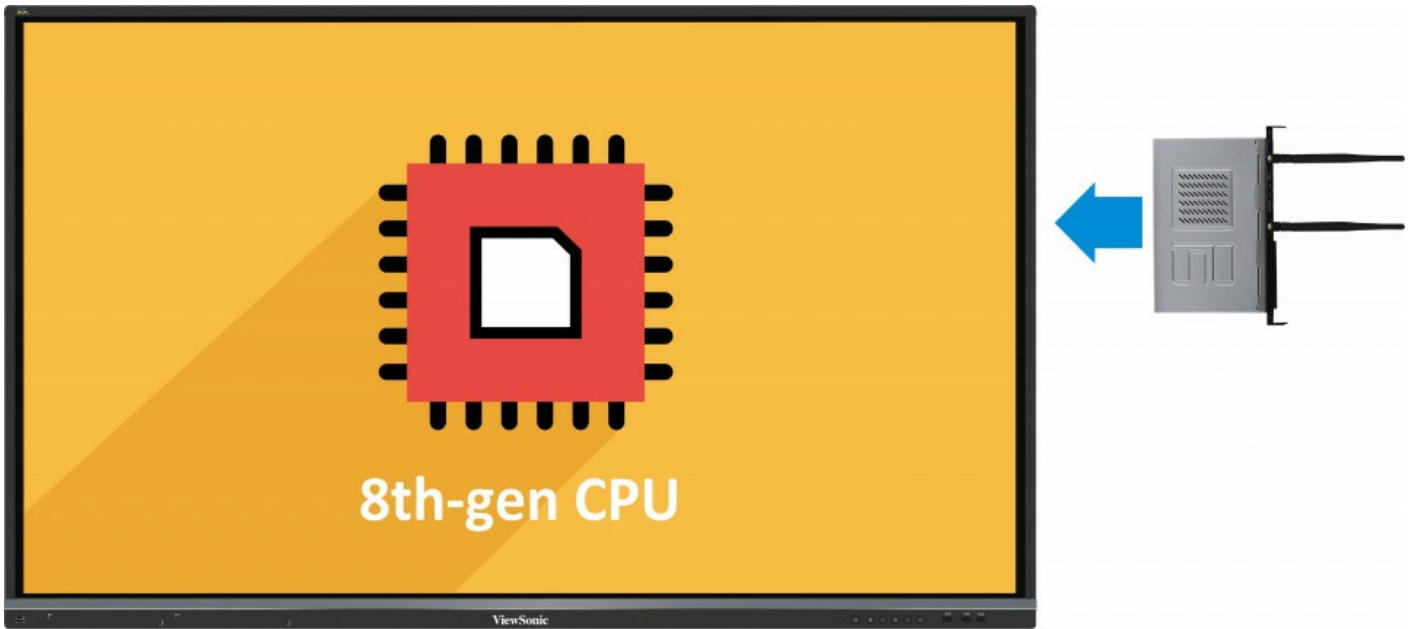
## Remote Control

Built-in RS232 port and vController software for remote control.



## Slot-in PC

Slot-in PC with Intel 8th-gen CPU (Optional).

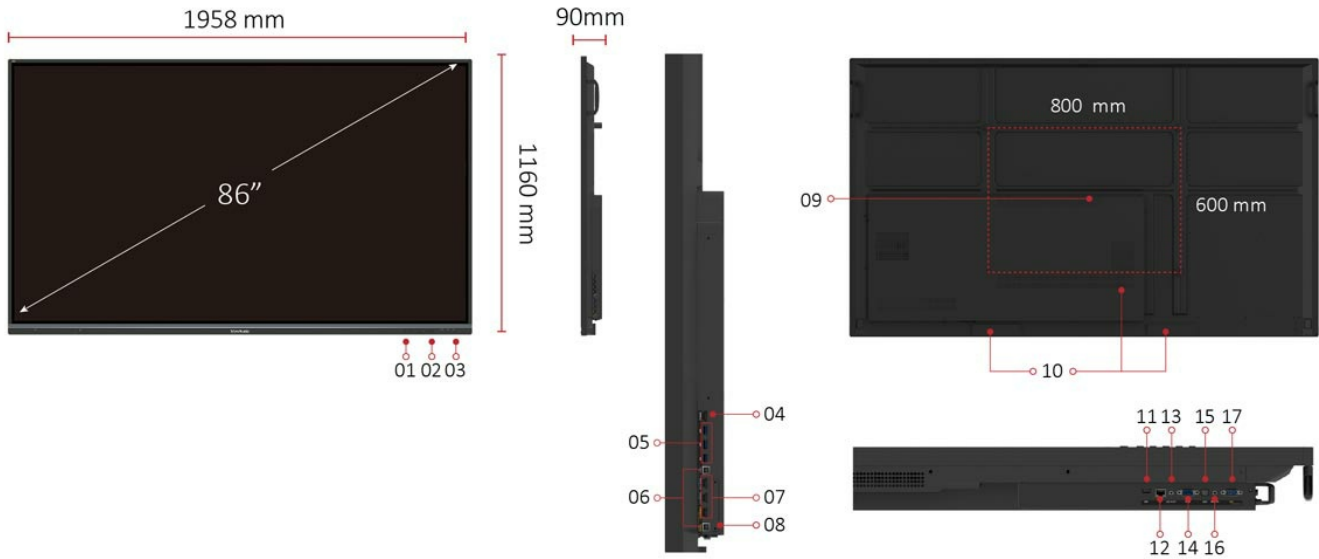


## Web Camera

Top-mounted 1080p web camera (Optional).



## I/O Port



1. MENU CONTROLS
2. USB 3.0
3. USB 2.0
4. HDMI OUT
5. USB 3.0
6. TOUCH
7. HDMI IN X 3
8. Wi-Fi Module Slot
9. VESA® Wall Mount 800x600mm
10. INTERNAL SPEAKERS
11. USB 2.0
12. LAN
13. Audio Out
14. RS232
15. SPDIF
16. Audio In
17. VGA

## Technical Specifications

<b>Display</b>	<b>Panel Size</b>	86"
	<b>Type/Tech</b>	TFT LCD Module with DLED Backlight.
	<b>Display Area (mm)</b>	1895.04 (H) x 1065.96 (V) (85.6" diagonal)
	<b>Aspect Ratio</b>	16:9
	<b>Native Resolution</b>	UHD 3840x2160 (Pixels)
	<b>Colors</b>	1.07B colors (10bit)
	<b>Brightness</b>	350 nits (typ.)
	<b>Contrast Ratio</b>	1200:1 Typ., 5000:1 Max. (DCR enable)
	<b>Response Time</b>	8ms
	<b>Viewing Angles</b>	H = 178, V = 178 typ.
	<b>Backlight Life</b>	30,000 Hours (Min)
	<b>Surface Treatment</b>	Hardness: 7H, Anti-glare coating



	<b>Bezel</b>	Slim
	<b>Orientation</b>	Landscape
<b>Platform</b>	<b>Processor</b>	ARM Cortex-A73*2 + Cortex-A53*2 1.5Hz
	<b>RAM</b>	3GB DDR4
	<b>Storage</b>	32GB
<b>Touch</b>	<b>Type/ Tech</b>	IR Recognition
	<b>Touch Resolution</b>	32767 x 32767
	<b>Touch Point</b>	20 points touch, 10 points writing
<b>INPUT</b>	<b>HDMI</b>	2.0 x3 (3840x2160 @60Hz)
	<b>RGB / VGA</b>	x1
	<b>Audio</b>	x1 (PC audio in)
	<b>RS232</b>	x1
	<b>OPS</b>	x1 PC Slot (proprietary)
<b>OUTPUT</b>	<b>HDMI</b>	x1 (4K/60Hz)
	<b>Audio</b>	x1 (Earphone out)
	<b>SPDIF</b>	1 (optical)
<b>LAN</b>	<b>RJ45</b>	x1
<b>USB</b>	<b>Type A</b>	USB2.0: Front x2, Rear x1 (SmartPort™ for all), USB3.0: Front x1, Rear x3 (SmartPort™ for Rear x3)
	<b>Type B</b>	x2, for touch
<b>SPEAKERS</b>	<b>SPEAKERS</b>	10W x 2 + 15W x 1
<b>Top Camera Plate</b>		Yes
<b>COMPATIBILITY</b>	<b>HDMI</b>	3840x2160
<b>Embedded OS</b>	<b>Embedded OS</b>	Android 8
<b>Bundle Software</b>	<b>Basic Annotation Software</b>	myViewBoard
	<b>Pro Annotation Software</b>	myViewBoard for Windows (Embedded in Windows Slot-in PC)
<b>Special Features</b>	<b>All-in-one USB port (combine Windows/Android USB port; no need to distinguish them anymore)</b>	Front "SmartPort™ USB" to all channels.
	<b>Simple LAN sharing between IFP and slot-in device</b>	10M/100M/ for Android, 10M/100M/1000M for slot-in PC
<b>Power</b>	<b>Voltage</b>	100-240VAC +/- 10% Wide Range
<b>ERGONOMICS</b>	<b>Wall Mount (VESA® )</b>	800 x 600
<b>OPERATING CONDITIONS</b>	<b>Temperature (° C)</b>	0°C to 40°C
	<b>Humidity</b>	10% ~ 90% RH non-condensing
<b>DIMENSIONS (W x H x D)</b>	<b>Physical (inch / mm)</b>	77.1 x 45.7 x 3.5 in / 1958 x 1160 x 90 mm
	<b>Packaging (inch / mm)</b>	83.6 x 53.0 x 11.0 in / 2123 x 1345 x 280 mm
<b>WEIGHT</b>	<b>Net (lb / kg)</b>	150.8 lb / 68.4 kg
	<b>Gross (lb / kg)</b>	200 lb / 90.7 kg
<b>REGULATIONS</b>	<b>REGULATIONS</b>	cTUVus, FCC, ES8, EPEAT, EMC/CE, CB, RoHS & DOC, REACH, WEEE, ErP, EAC, UKrSEPRO, RCM, BSMI
<b>PACKAGE CONTENTS</b>	<b>PACKAGE CONTENTS</b>	1. Power cable (3 meters). VSAx1, VSEx2, VSIx4 2. Remote control 3. USB cable (3 meters) 4. Touching pen x 2 5. Quick Start Guide 6. RS232 adapter 7. Clamp x 5 8. Plate 9. Screw x 8 10. HDMI cable 3M
<b>Compatible Slot-in PC</b>	<b>Compatible Slot-in PC</b>	VPC14-WP series, VPC10-WP series, VPC15-WP series, VPC16-WP series, VPC17-WP series

