

myViewBoard[®] Sens

Optimizing spaces for
better engagement





Data-driven Optimization

Sens provides a full spectrum of data to make the most of learning spaces. Better understanding is better learning.

Next-Gen Social-Emotional Feedback

**Take the guesswork out of sensing
the mood of your students**

Social-emotional feedback is a vital part of modern education, but constantly monitoring the class's emotional state can take the teacher's attention off the lesson.

Sens is a game-changer for classroom engagement.



Impartial
Data

Give the teacher the freedom to get a deeper understanding of their students.

Emotional
Awareness

Through heightened awareness of students' emotional states, teachers can adjust the activity to adapt to students' need.

Optimized
Learning
Spaces

Without a subjective filter on student responses, Sens offers objective feedback and insights on the efficacy of the lesson and adjust environmental conditions for optimal learning.



Secure and Private

Personal information and expressions are never shared or stored.

With advanced end-to-end security, you can ensure the privacy of your students.



Onboard Data Processing

The Sens device's AI algorithm processes the viewable facial features as data points and sends out only raw data. No images are stored ever.



Secure Connection

Keep all on-board data safe with a USB connection. There is no video output, only a one-way output of numerical information.

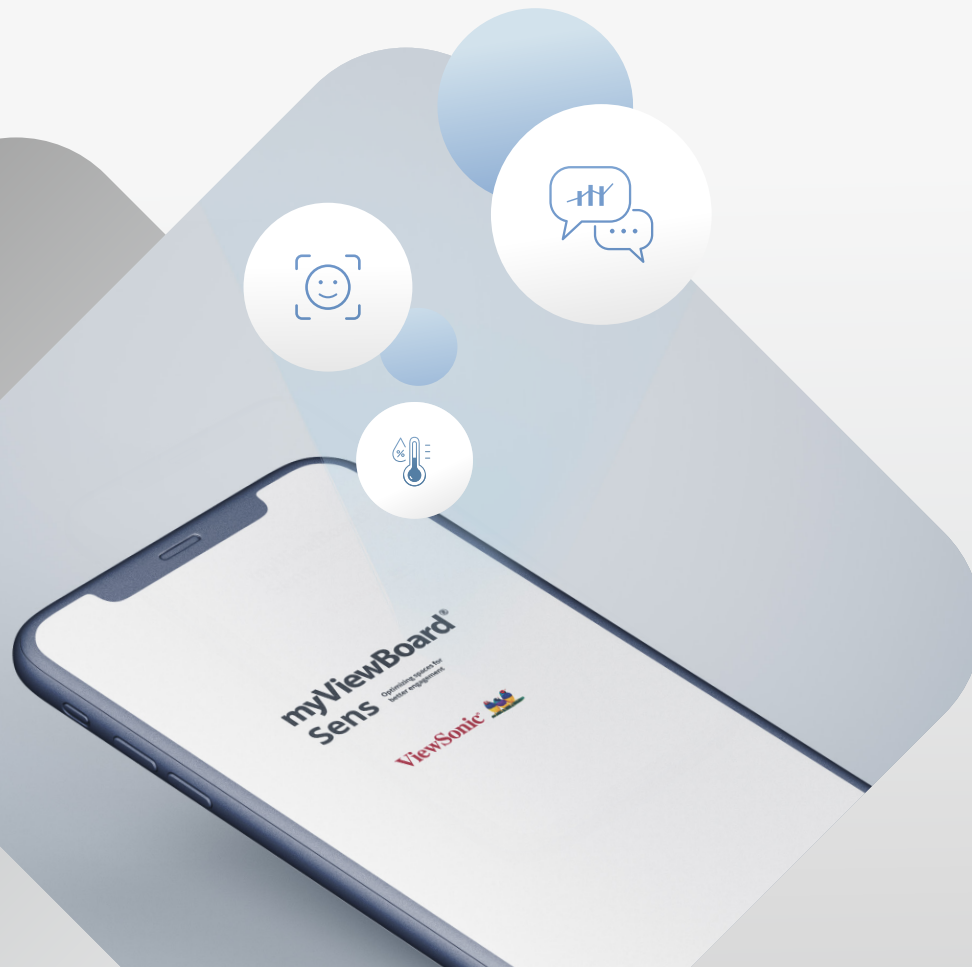


Enterprise-grade Encryption

Make full use of ViewSonic's machine learning Sens algorithms while keeping data safe with AES256 encryption via AWS.

Emotion Recognition

To improve engagement rates, Sens measures every student's facial expression for real-time tracking.



Respond To Instant Feedback

Mobile devices can be set to vibrate for discreet real-time feedback. Teachers can use the live feedback to self-adjust and better engage with their students.



The Full Class in Focus

Combined sensors to analyze the whole room

Track reaction in real-time. From the front row all the way to the back of the room, dual lenses collect data from a full view of the classroom. Get the big picture with real-time engagement data.

Trend Tracking for Better Engagement

Long-term data collection and analysis with machine learning

Create the best possible learning environment with a comprehensive data collection system. Collect, save, and analyze classroom data to make the most of every lesson now and in the future.



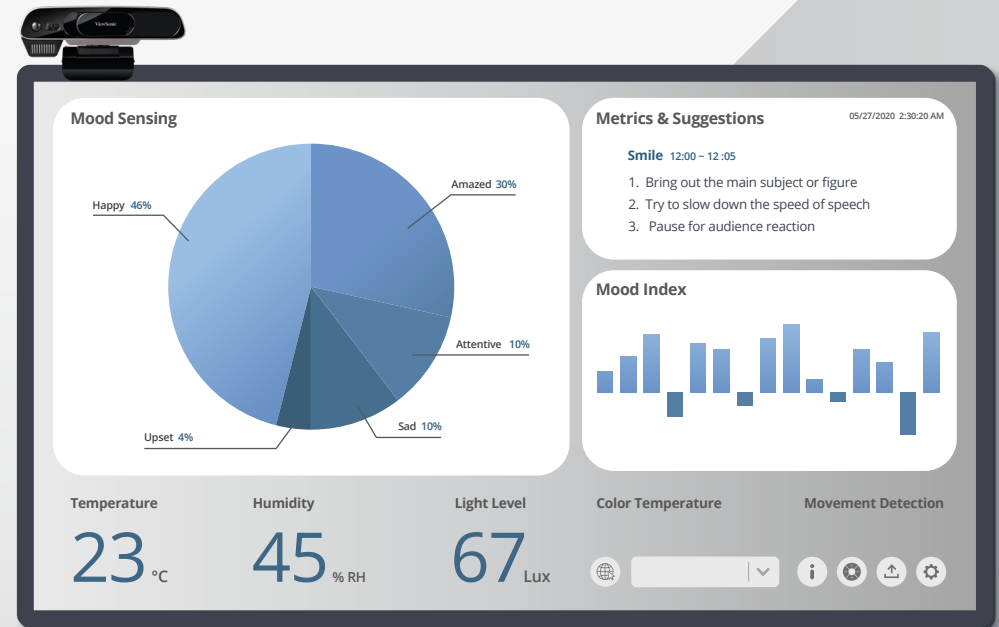
Measure temperature and humidity against performance for a holistic view.



Determine optimal lighting and automate control with connected smart lighting systems.



Measure engagement throughout lesson to maximize understanding and retention.



myViewBoard® Sens

Optimizing spaces for better engagement



Package Contents

- myViewBoard Sens
- Output with:
 - HDMI
 - USB Type-C to USB Type-A
 - USB Type-C to USB Type-C
 - Power Adaptor
- Quick start guide
- EVA gasket

Product Dimensions W×H×D

- 156.32 x 102.54 x 71.70 (mm)
- 6/15 x 4.04 x 2.82 (in)

Weight

- Gross weight: 1060 g (2.337 lb.)
- Net weight: 305 g (0.672 lb.)

