

ViewSonic® 

All-in-One Direct View LED Displays

Built for Large-Scale Pro AV Integration





The Rise of All-in-One Direct View LED Technology

All-in-One Direct View LED displays are transforming the way businesses deploy large-scale digital signage. By integrating the power supply, control system, image stitching, and display modules into a single, streamlined solution, ViewSonic's All-in-One Direct View LED solutions simplify installation and significantly reduce total cost of ownership—making high-impact visual communication more accessible than ever.

As demand grows for immersive, dynamic displays in conference rooms, lobbies, command centers, and retail environments, All-in-One Direct View LED solutions are driving this shift. ViewSonic is leading the way with a comprehensive All-in-One LED lineup, spanning foldable options designed for rapid setup, pre-configured 16:9 displays, and fully customizable configurations—all built for easy deployment, straightforward maintenance, and bold, unforgettable messaging wherever it's needed most.

Versatile Applications Across Modern Spaces

Equipped for easy deployment and straightforward maintenance, ViewSonic's All-in-One Direct View LED solutions are transforming how organizations communicate, engage, and operate. By removing the complexity of traditional modular LED setups, these streamlined solutions lower the barrier to large-format LED adoption. The result is exceptional clarity, flexibility, and performance in environments where bold, reliable communication is essential.



Corporate Lobbies & Reception Areas

Create unforgettable first impressions with immersive branding and dynamic content that elevate any entrance.



Event Venues & Auditoriums

Modular designs provide flexibility and visual punch for large-scale presentations and performances.



Conference & Training Rooms

Clear, vibrant visuals—with collaboration features such as wireless content sharing and screen-split modes available on select models—enhance presentations, video calls, and teamwork.



Command Rooms

Ideal for mission-critical environments, these displays offer 24/7 reliability and real-time data visualization.



Hospitality & Retail Environments

Add eye-catching energy to customer experiences, with a slim, space-saving design that blends seamlessly into any environment.



Displays Designed for Every Business

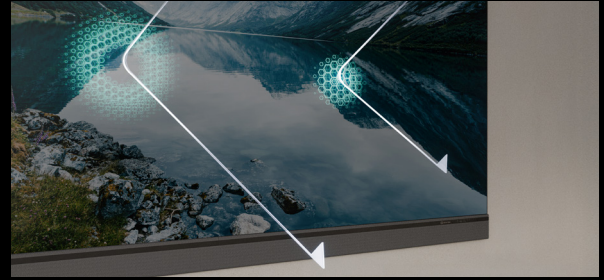
From high-traffic lobbies to control rooms that demand 24/7 performance, the applications for Direct View LED are as diverse as the industries using them.

No matter which ViewSonic® Direct View LED series you choose, you'll benefit from the same core strengths that set our solutions apart—versatility, visual excellence, easy management, and world-class support. Designed to deliver impactful performance in virtually any environment, every display in our lineup is built with features that make installation, usage, and maintenance easier than ever. Explore some of the shared advantages that come standard across our entire portfolio



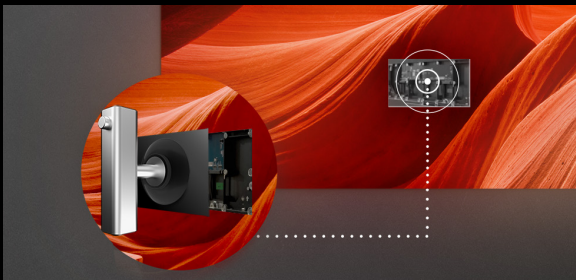
Flexible Sizing

Fixed 16:9 screens up to 231" and customizable solutions allow for unique aspect ratios and resolutions.



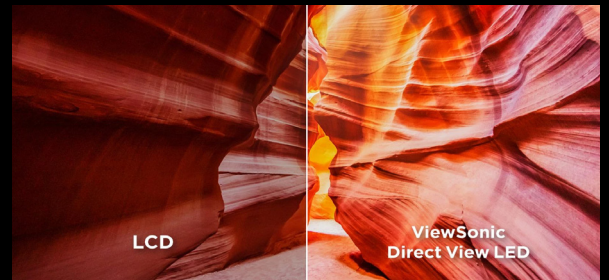
Reliable LED Options: GOB & COB

ViewSonic offers GOB and COB technologies for dependable performance. Opt for GOB for enhanced surface protection, or choose COB for finer pixel pitch and more refined image detail. The IP54-rated module surface resists dust and moisture, with impact protection up to IK08.



Front Serviceability

Enjoy easy maintenance thanks to LED modules that are accessible from the front of the display.



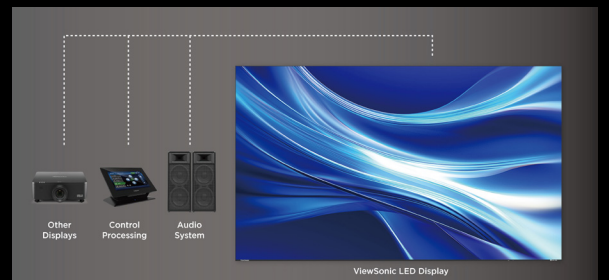
Brilliant Visuals

These displays deliver jaw-dropping, lifelike color and stunning images thanks to a 3,840Hz refresh rate, 600 nits brightness, and up to 10,000:1 contrast ratio.



Easy Screen Sharing

AirSync wireless casting software, available on select models, lets you wirelessly mirror your screen from compatible devices to a larger display using our secure app or web browser.



Control System Compatibility

Q-SYS Certified, with compatibility across other leading control platforms for seamless Pro AV integration.



Foldable and Mobile Video Wall on Wheels LDS Series

Need flexibility on the move? The LDS138-151 mobile display brings Direct View LED technology to any space with ease. Featuring a foldable 138" screen, GOB surface protection, and a robust, motorized height-adjustable stand, it's perfect for dynamic presentations and portable digital signage in corporate and educational settings. Simply roll it in, unfold, and power on.

Easy Setup

Experience effortless setup in just minutes—no wall mounting or complex installation needed. Simply unfold, plug into a standard power outlet, and you're ready to impress with vibrant visuals anywhere.

Durable and Reliable

A commercial-grade motorized stand and patent-pending hinge design provide enhanced stability, even with heavy usage. Glue-on-Board (GOB) technology offers incredible surface protection with IP54-rated dust and moisture resistance and IK06 impact resistance.

Mobile and Foldable

This display effortlessly glides between classrooms, event spaces, and meeting rooms with smooth, 360-degree silent wheels. Its innovative foldable design enables the display to fit into large passenger elevators, while an included flight case provides secure protection during transport between venues.

Integrated Control Bar

A user-friendly control bar is built into the floor stand, maximizing the screen area and keeping the display front clean and uncluttered.



**Embrace Excellence:
Your Start at NexaCorp.**





Pre-Configured, All-in-One Simplicity LDP/LDM/LDE Seires

Simplify large-format LED deployment with a streamlined, pre-configured approach. The ViewSonic pre-configured series delivers All-in-One Direct View LED displays with exceptional image quality, multiple 16:9 size options, and easy installation—at a more accessible price point. Ideal for higher education lecture halls, corporate boardrooms, and lobbies, these displays balance visual impact with everyday practicality.



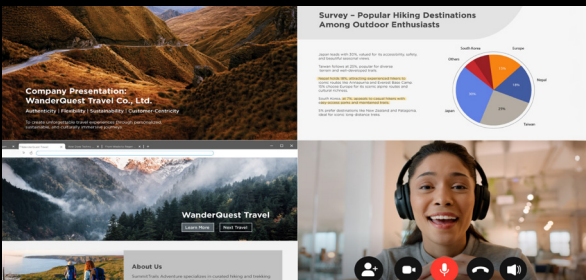
Immersive Screen Sizes

Choose from 136", 163", 217" and 231" options.



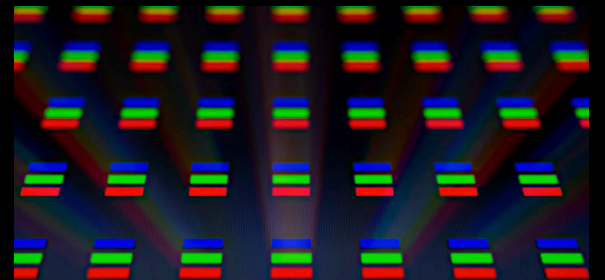
Flexible, Hassle-Free Installation

The system control bar is mounted to the bottom of the display for standard installation. Optional accessory kits are available for hidden or separate installations. A modular, user-friendly design ensures quick and easy setup.



Seamless Collaboration

Select models support real-time Picture-by-Picture (up to 4 simultaneous inputs) and Picture-in-Picture configurations, enabling a dynamic, flexible collaboration experience that adapts effortlessly to diverse working scenarios.



GOB vs. COB: Fit for Purpose

Choose GOB for added surface protection and 1080p resolution options, or COB for fine pixel pitch, finer image detail, and 4K resolution options—both engineered for reliable performance in daily use.

**COB: LDP; GOB: LDM & LDE.*

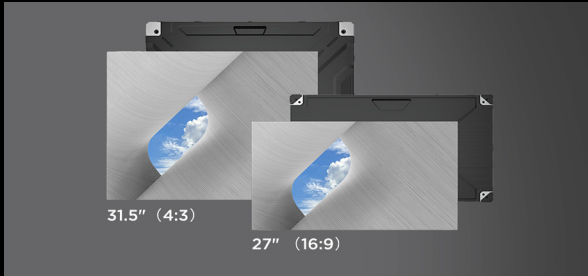


MONDRIAN
HOLLAND

Customisable All-in-One Direct View LED Displays

LDC Series

The LDC series breaks free from traditional 16:9 constraints, allowing you to design the perfect video wall that fits your specific needs. Regardless of the shape, size and configuration of your video wall, rest assured that it will deliver amazingly vibrant and stunning images in 1080p, 4K and non-standard resolutions.



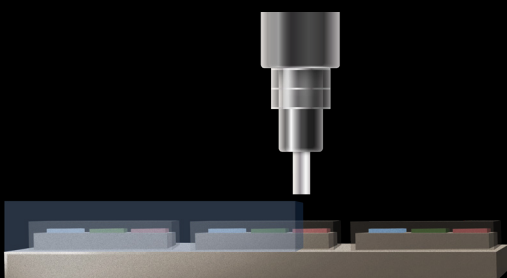
Flexible Cabinet Size

Design a Direct View LED video wall that fits your space with 16:9 and 4:3 cabinet options—so you can choose the format that best matches your layout and content needs.



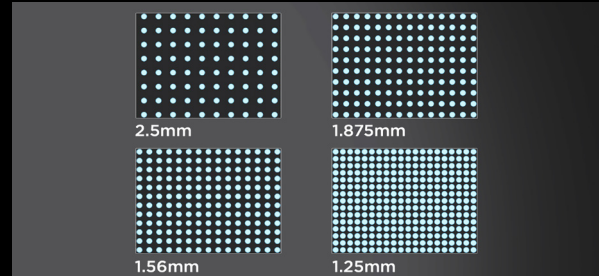
Simplified Power Setup & Rack-Mount Design

The LDC Series Control Box is available in multiple configurations for different installation needs. The Rack-Mount All-in-One System Control Box is built for professional AV environments, integrating into server racks for centralized control while simplifying power management and lowering installation costs.



GOB & COB Options

Choose GOB for added surface protection, or COB for finer pixel pitch and more detailed visuals. Both are engineered for everyday reliability, featuring an IP54-rated module surface and IK06 impact protection.



Pixel Pitch

Multiple pixel pitch options—0.9, 1.2, 1.5, 1.8, and 2.5—let you choose the level of image refinement that best fits your content and space. From crisp text to detailed visuals, each option helps deliver a clean, polished viewing experience.



Trusted Partnership from Design to Post-Installation

An experienced ViewSonic Field Solutions Architect will guide you through every step—design, site prep, product and spec recommendations, and installation prep—at no extra cost. We'll also verify site readiness and provide on-site supervision during installation.



Copyright
All rights reserved by ViewSonic Corporation. All other Corporate names and trademarks are the property of their respective companies. E&EO. All specifications are subject to change without written notice. Images are for illustrative purpose only. Offers and programs may vary by country. Please contact your local ViewSonic office for more information. Copyright © ViewSonic Corporation 2000-2026. All rights reserved.



ViewSonic



Contact Us