

# 5,000 ANSI Lumens WUXGA Installation Projector

LS850WU



- 2nd Generation Laser phosphor technology
- 20,000 hours lifespan
- Wide H/V lens shift & 1.6X optical zoom
- 360° Creative Applications & 90° Portrait Mode
- Built-in HDBaseT receiver

ViewSonic's LS850WU is an advanced 5,000 ANSI Lumens WUXGA installation projector. Adopting 2nd generation laser phosphor technology, it offers high and consistent brightness for a reliable light source life of 20,000 hours. Wide lens shift, 1.6x optical zoom, 360° projection and portrait mode together allow for amazing flexibility. Combined with its compact size and built-in HDBaseT, this flexibility helps realise your creative installations in auditoriums, board rooms and commercial displays, ensuring the desired cost-effectiveness.

## High Brightness

Packed with 5,000 ANSI Lumens, it is guaranteed to produce high levels of brightness suitable for large spaces with a lot of ambient light.

**5,000 ANSI Lumens**



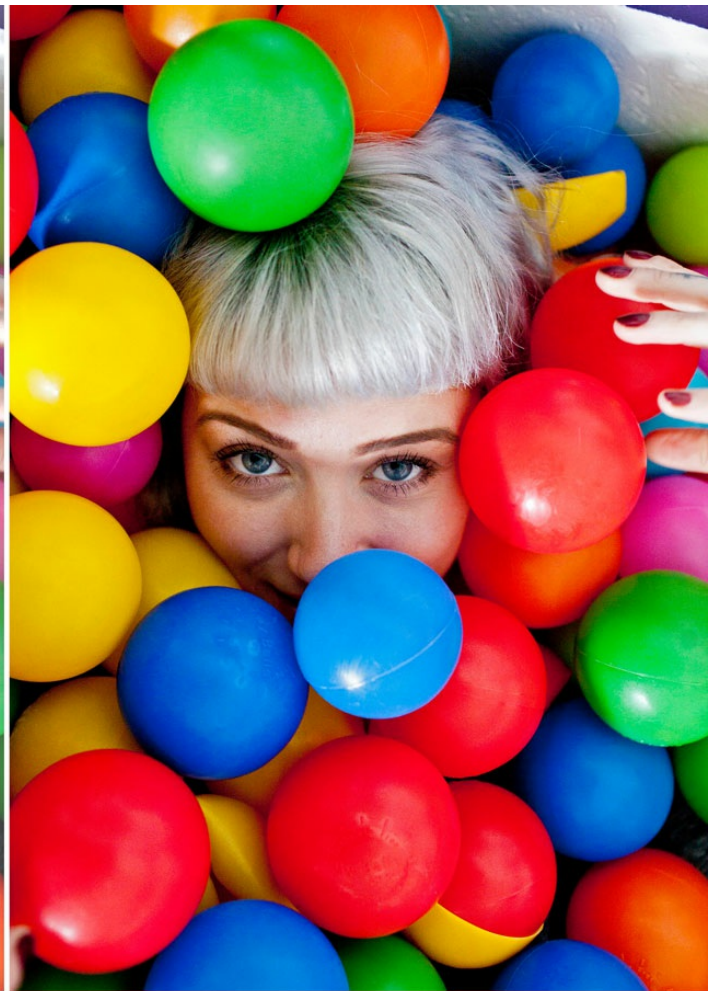
## Ultra-high Contrast Ratio

Boasting a 3,000,000:1 ultra-high contrast ratio, even the finest shades of color are enhanced – a key characteristic for delivering razor-sharp images.

**3M:1 Contrast Ratio**



Normal

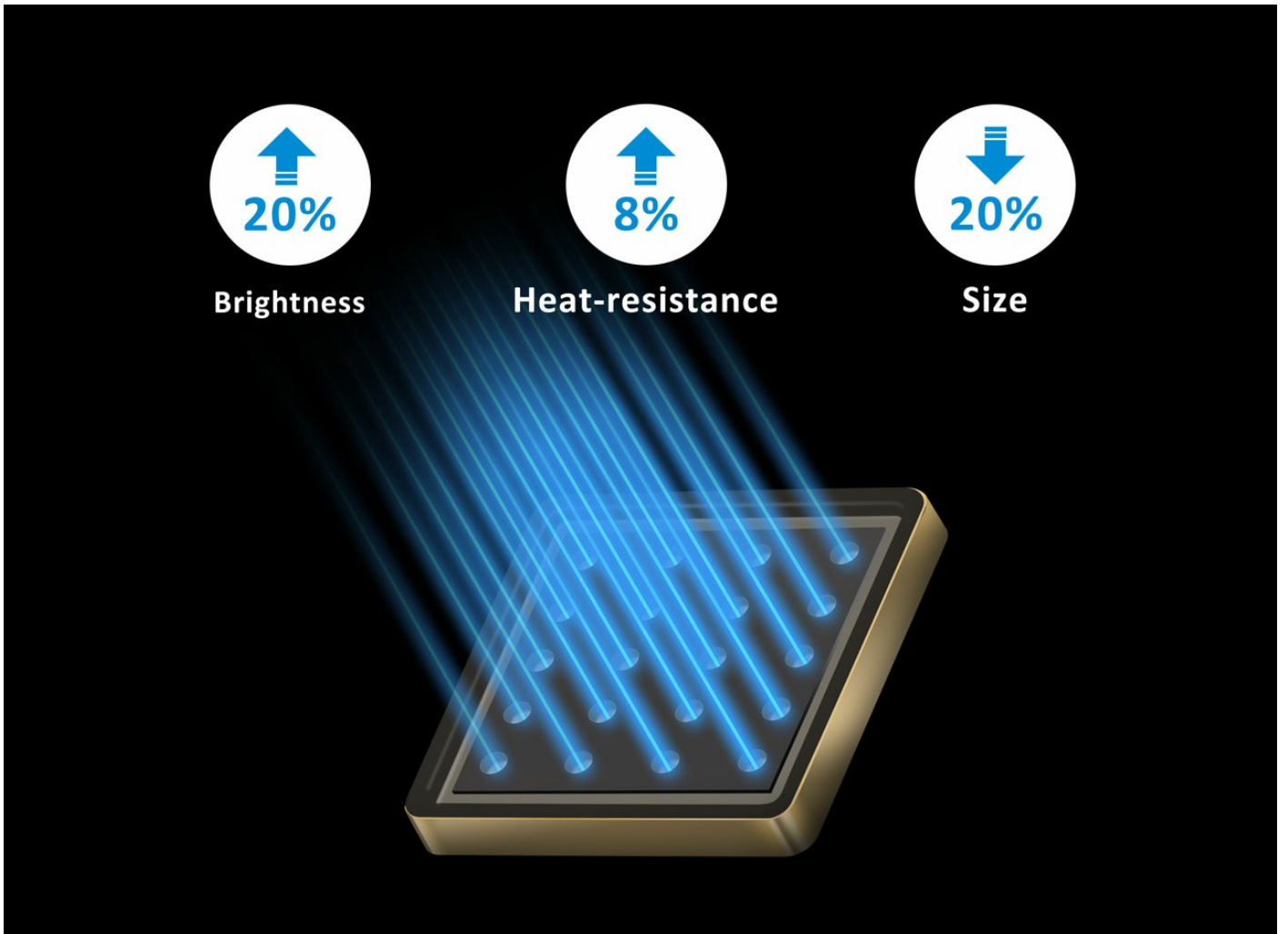


3000000:1

## 2nd Generation Laser Phosphor Technology

The ViewSonic new laser projector adopts the 2nd generation laser phosphor technology. In addition to inheriting excellent color performance, lamp-free design, and instant on/off switch from the previous generation, technology on the new generation improves around 20% of brightness, better heat-resistance, and a smaller module design, making the images consistent in ambient settings as well as increased reliability with a more compact size for extended use in various scenarios.

2nd Generation **Laser Phosphor Technology**



## Long-lasting Lifespan

Laser technology offers a lifespan up to 20,000 hours (4 hours per day for more than 13 years), delivering reliable long-term performance with no degradation in brightness over time so that your installations are consistently vibrant.

**20,000 hours** Lifespan



## Adaptable to any environment

Equipped with a 1.6x optical zoom lens, the projector provides mounting flexibility with a wider throw distance range.

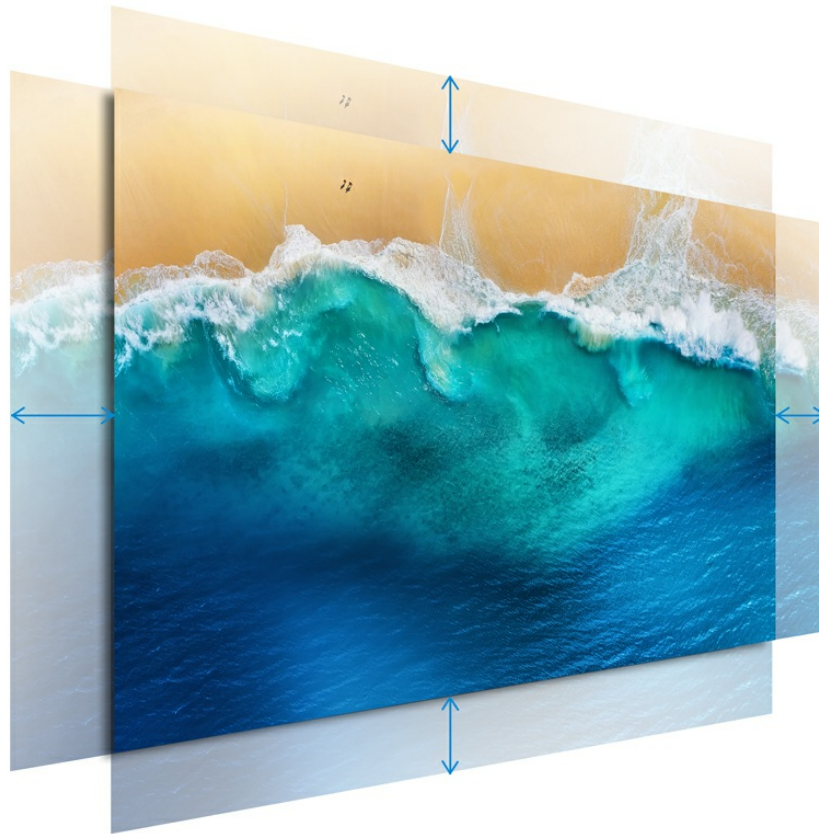
### 1.6x Optical Zoom



## Installation Flexibility

The tool-free, lens shift control knobs make adjusting the projection lens up, down, left, and right easy. It provides flexible installation options with a wide adjustable range (H: +/- 23%, V: +/-50%) and less placement restrictions.

### Wide H/V Lens Shift



## 360° Creative Applications

The projector can freely rotate at any angle vertically to aid with creative applications, allowing projection onto ceilings, walls, or angled signage.

**360-degree** Projection



## 90° Portrait Mode

Portrait mode allows users to turn the projector 90 degrees to increase the vertical field of view and add more applications for projection mapping, staging, and advertising.

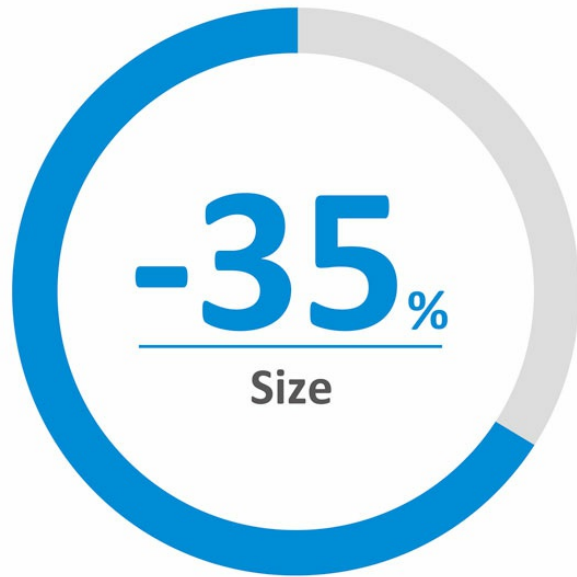
### **Portrait Mode**



## **Lighter Weight and Compact Size**

It is almost half the weight and 35% smaller in size when compared with its predecessor, which reduces the cost of transportation and enhances the ease of installation.

**Lighter Weight**  
**Compact Size**



## **Built-in HDBaseT Receiver**

Its built-in HDBaseT receiver is a cost-effective solution to transmit uncompressed high resolution audio and video at a lengthy distance (100 meters for 1080p) when combined with a Cat.5e/6 cable and is compatible with any certified HDBaseT transmitter.

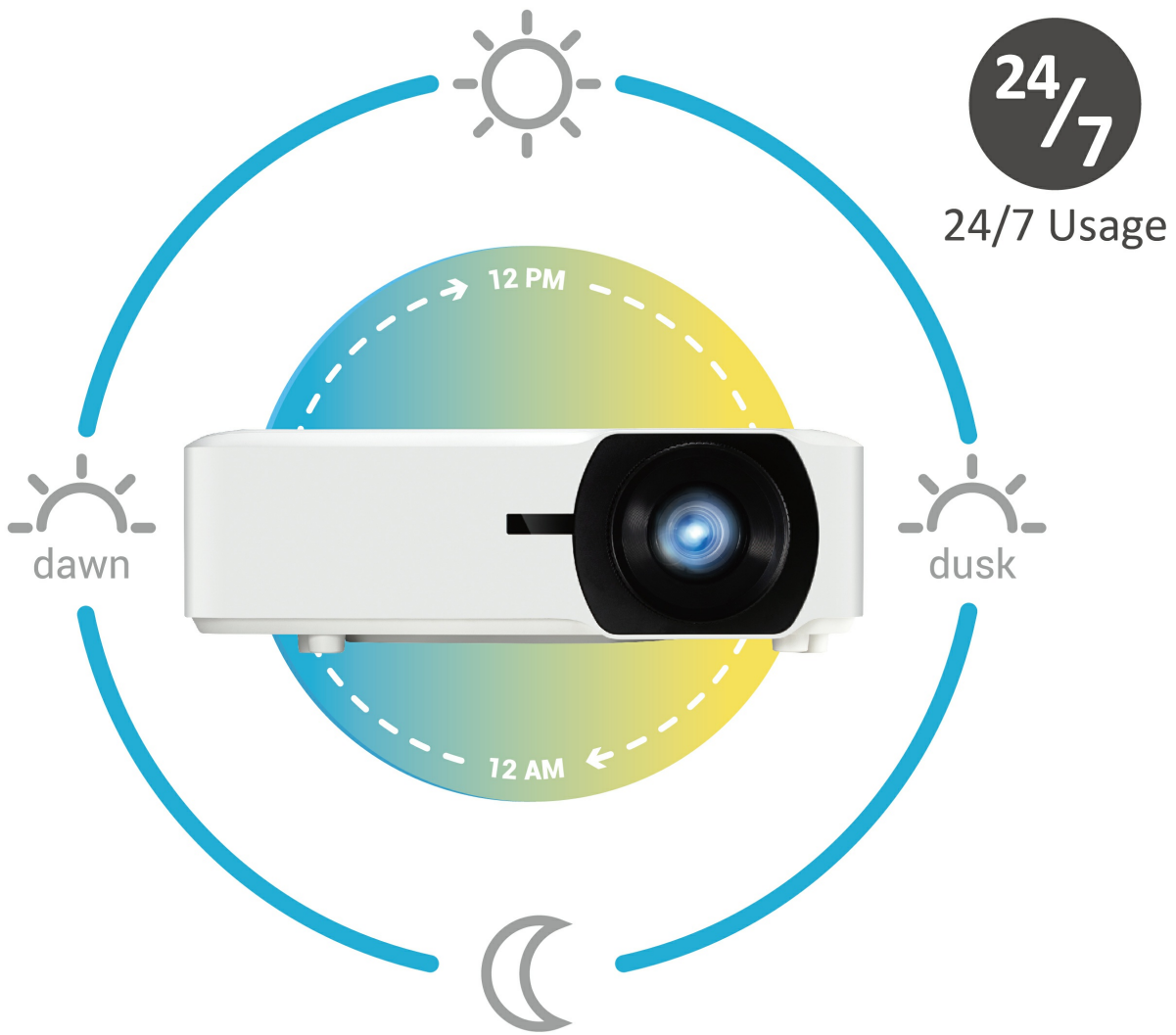
**HDBaseT**Receiver



## Non-stop 24/7 Operation

With an advanced cooling design, it enables 24/7 operation without degradation of quality or performance, making the projector ideal for applications that require continuous projection.

### 24/7 Operation



## Network Management

This projector comes equipped with Control 4, Crestron, AMX, Extron and ViewSonic vController, an easy-to-use network management tool.

\* The Control 4 driver will be built into the device in advance and get certification once it has finished the verification process.

### LAN Control



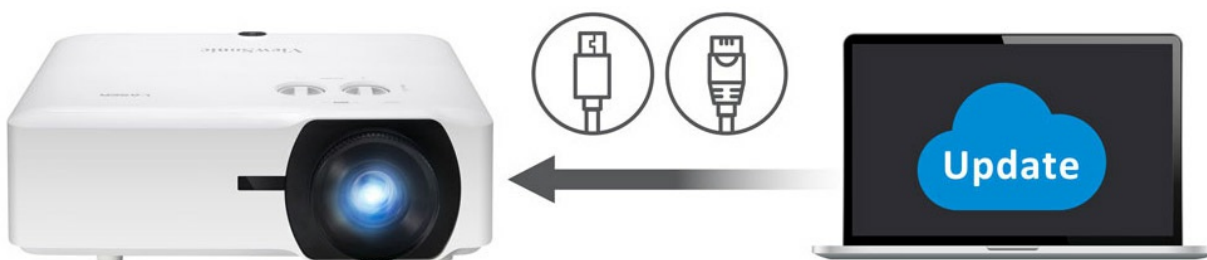
256  
Projectors



## A Simpler Way to Update Projector Software

ViewSonic Projector Software Update is available online and gives you the ability to keep your projector firmware up to date easily and conveniently; no need to take your projector in to a service center for software updates.

### Projector Software Update & LAN Update



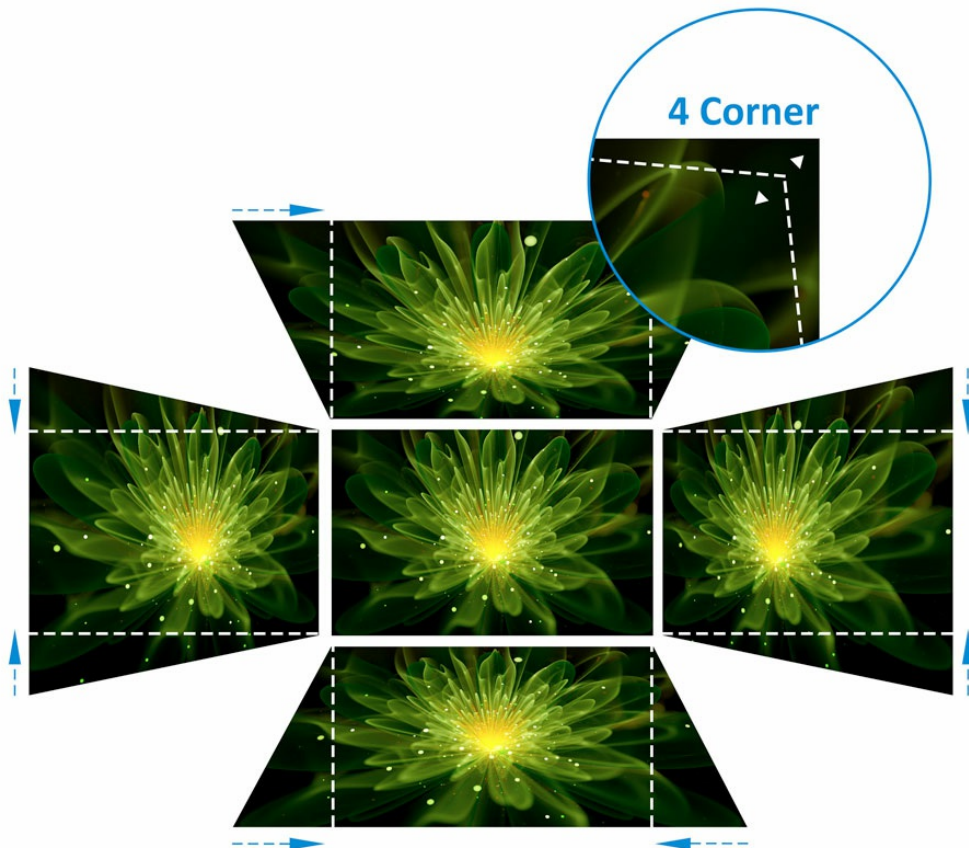
## Easy Image Adjustment

Horizontal and Vertical Keystone correction along with 4 corner adjustment features eliminate crooked or

distorted images for a perfectly proportioned picture every time.

### H/V Keystone

### 4 Corner Adjustment



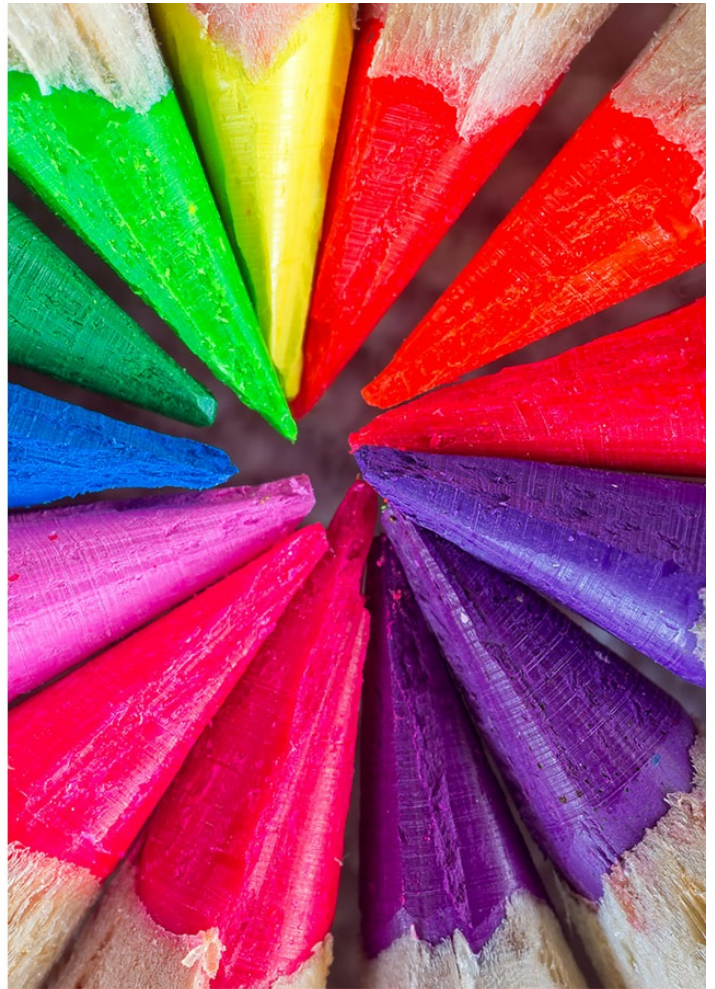
## Amazing Color Accuracy

ViewSonic's proprietary SuperColor™ Technology displays a wide color range, ensuring that users enjoy a true-to-life color performance in both bright and dark environments without sacrificing image quality.

**SuperColor™** Technology



Normal



SuperColor™ Technology

## Sealed Optical Engine with IP5X

The advanced sealed optical engine prevents dust and moisture from entering the projector and affecting the thermal system to ensure that the image quality and long lifespan are maintained.

**IP5X**



## Reduced Energy Consumption

When no signal has been detected, the projector will automatically power off to conserve energy and therefore prolong its lifespan.

### **Auto Power Off**



## **Energy Efficiency**

Power Saving Mode allows users to extend the projector's lifespan and minimize energy consumption. When in Power Saving Mode, the projector will automatically switch into Eco Mode and SuperEco Mode whenever there is no signal input detected.

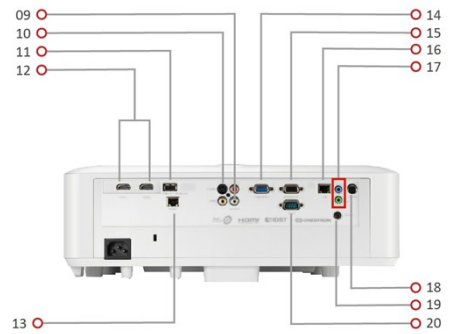
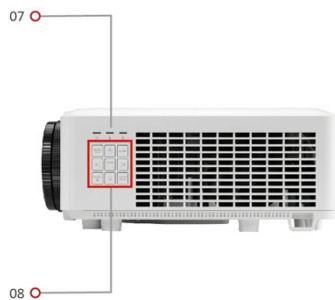
### **Power Saving**



# Eco Friendly



## Exterior & Rear I/O Connectors



1. Power Key & IR
2. Front IR
3. Lens
4. Lens Shift Control Knob
5. Zoom/Focus Ring
6. Adjustment Foot
7. LED Indicator
8. Keypad
9. Composite

- 10. S-Video
- 11. USB Type A (5V/1.5A)
- 12. HDMI x 2
- 13. HDBaseT
- 14. Computer In
- 15. Monitor Out
- 16. LAN
- 17. Audio In & Out
- 18. 3D VESA
- 19. 12V Out
- 20. RS-232



## Technical Specifications

**Specification**

**Projection System**

0.48" WUXGA

<b>Native Resolution</b>	1920x1200
<b>DMD Type</b>	DC3
<b>Brightness</b>	5000 ANSI Lumens
<b>Contrast Ratio</b>	3000000:1
<b>Display Colour</b>	1.07 Billion Colours
<b>Light Source Type</b>	Laser Phosphor system
<b>Light Source Life (Normal)</b>	up to 20000
<b>Lamp Watt</b>	Nichia 67W x2
<b>Lens</b>	F=1.81-2.1, f=14.3-22.9mm
<b>Projection Offset</b>	0 (lens shift =0)
<b>Throw Ratio</b>	1.36-2.18
<b>Optical Zoom</b>	1.6X
<b>Digital Zoom</b>	0.8x-2.0x
<b>Image Size</b>	30"-300"
<b>Throw Distance</b>	0.88-14.09m (100"@2.93m)
<b>Keystone</b>	H: +/-40° , V: +/-40°
<b>Lens Shift V. Range</b>	Yes (+50%, -50%)
<b>Lens Shift H. Range</b>	Yes (+23%, -23%)
<b>Audible Noise (Normal)</b>	37dB (TBD)
<b>Audible Noise (Eco)</b>	30dB (TBD)
<b>Input Lag</b>	16ms
<b>Resolution Support</b>	VGA(640 x 480) to WUXGA(1920 x 1200)
<b>HDTV Compatibility</b>	480i, 480p, 576i, 576p, 720p, 1080i, 1080p
<b>Video Compatibility</b>	NTSC, PAL, SECAM
<b>Horizontal Frequency</b>	15K-102KHz
<b>Vertical Scan Rate</b>	23-120Hz
<b>Input</b>	
<b>Computer in (share with component)</b>	1
<b>Composite</b>	1
<b>S-Video</b>	1
<b>HDMI</b>	2 (HDMI 1.4a/HDCP1.4 x2)
<b>Audio-in (3.5mm)</b>	1
<b>Audio-in (RCA R/L)</b>	1
<b>3D VESA (Sync)</b>	1
<b>HDBaseT</b>	1
<b>RJ45 Input</b>	1 (LAN control)
<b>Output</b>	
<b>Monitor out</b>	1
<b>Audio out (3.5mm)</b>	1
<b>Speaker</b>	10W x2
<b>USB Type A (Power)</b>	1 (5V/ 1.5A) (share with service)
<b>12V Trigger (3.5mm)</b>	1 (3.5mm)
<b>Control</b>	
<b>RS232 (DB 9-pin male)</b>	1
<b>RJ45</b>	1
<b>USB Type Mini B (Services)</b>	1
<b>Others</b>	
<b>Power Supply Voltage</b>	100-240V +/- 10%, 50/60Hz (AC in)

<b>Power Consumption</b>	Normal: 280W Standby: <0.5W
<b>Operating Temperature</b>	0~40°C
<b>Net Weight</b>	6.4kg
<b>Dimensions (WxDxH) with Adjustment Foot</b>	405x305x145mm
<b>OSD Language</b>	English, French, Spanish, Thai, Korean, German, Italian, Russian, Swedish, Dutch, Polish, Czech, T-Chinese, S-Chinese, Japanese, Turkish, Portuguese, Finnish, Indonesian, India, Arabic, Vietnamese, Greek, total 23 languages

**Standard Accessory**

<b>Power Cord</b>	1
<b>VGA Cable</b>	1
<b>Remote Control</b>	1 (w/ laser pointer)
<b>QSG</b>	1