

Full HD Home Theater Laser Projector with Rec.709

ViewSonic® See the difference™ 

LS820



Modern design and stunning performance. Laser TV is the perfect fit for your living room.

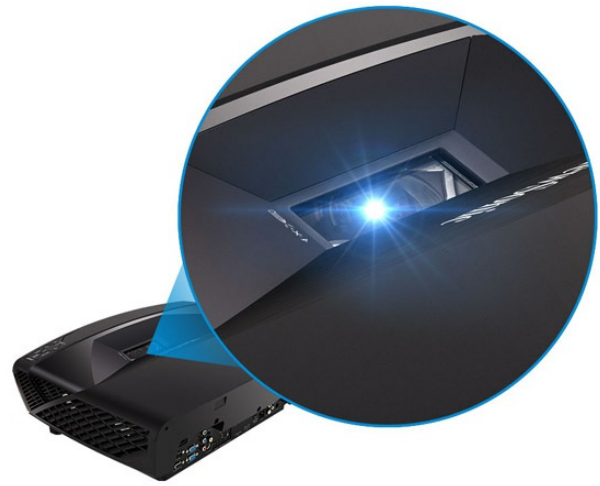
Viewsonic's LS820 Laser TV paired with the BrilliantColorPanel™ (projector screen) is available in 100" or 120" and delivers an astonishing visual experience with crisp detail in ambient light environments, bringing the world of entertainment right into your home. With the help of laser phosphor technology and Rec. 709 color accuracy, this projector is equipped with all the tools necessary to deliver incredibly rich color and razor-sharp imagery for any occasion. Unlike the traditional projector design, the LS820's innovative 0.23 ultra short throw ratio means that it can be subtly positioned within inches of a wall, allowing the flexibility necessary for fitting into the design of any home entertainment space. Packed with 3,500 ANSI Lumens, it ensures that display quality will remain consistent without being affected by bright ambient lighting. The LS820 also features instant on/off and a hidden PortAll™ compartment which accommodates additional accessories such as a wireless streaming device or PC stick. With its refined design and stunning performance, the LS820 is certain to add an air of sophistication and grace to any modern home entertainment space.

Refined Design Quality

With its sleek, modern minimalist design sporting an elegant black finish, LS820 lends a hand to a stylish home entertainment space.

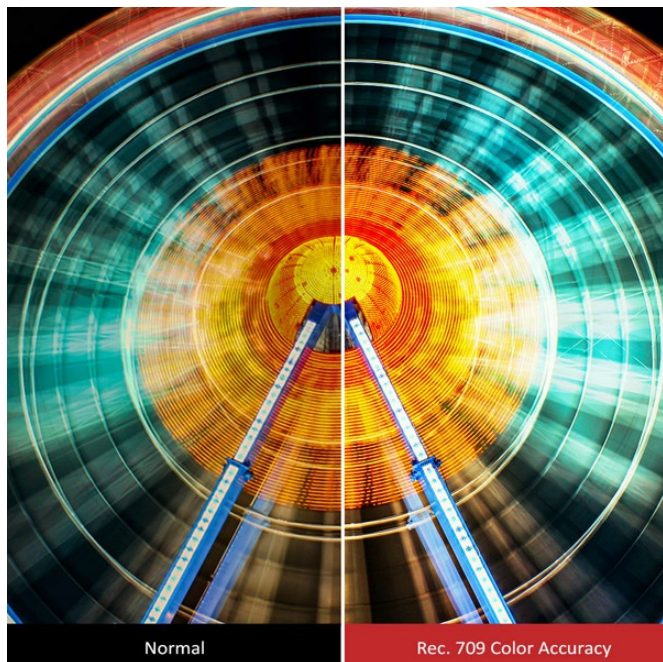
Laser Phosphor Technology

LS820 comes equipped with a laser phosphor light source designed to deliver superior color uniformity and ultra-high brightness display.



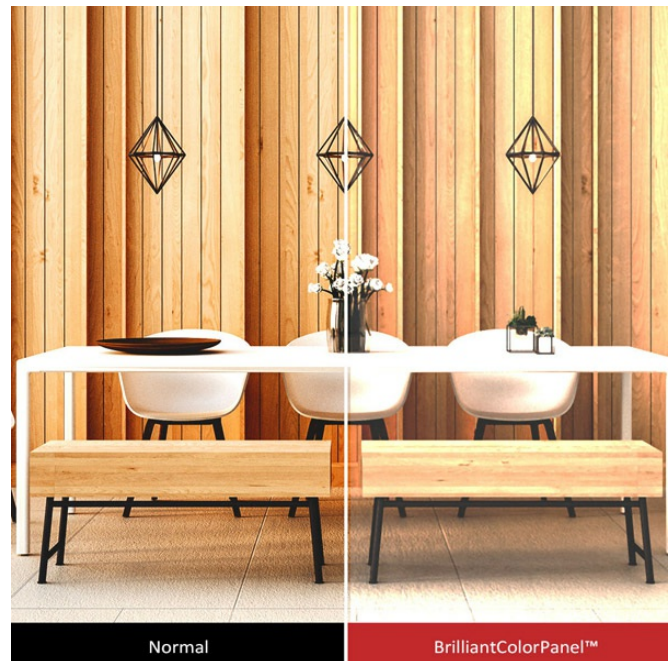
Precision Color Accuracy

LS820 utilizes the international HDTV standard for color accuracy, which covers a wider range of the color gamut to ensure that you see colors exactly as they were meant to be seen.



A Truly Immersive Experience

Optional BrilliantColorPanel™ achieves a contrast ratio 4-times higher than that of an average projector screen, enhancing the most delicate shades of color and giving off the feel as if you are in the middle of the action.



Vivid Clarity and Colors

LS820 features Full 1080p HD color resolution for a sharp, colorful picture without pixel distortion.

Ultra Short Throw Allows for Ultimate Flexibility

0.23 ultra short throw lens allows for simple and flexible set up. Placing it as close as 21cm away from a wall will project a 100" image and give the projector a subtle presence.



Breathtaking Brightness in Any Environment

Packed with 3,500 ANSI Lumens of output, LS820 is well equipped to produce bright images in any environment – with notable performance in rooms with high ambient light.



Stunning Display in Bright Environments

Engineered with innovative panel technology, the ridged surface of BrilliantColorPanel™ is designed to deflect 90% of ambient light while leaving the color being displayed on the screen unaffected.



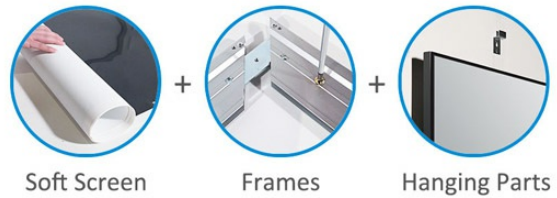
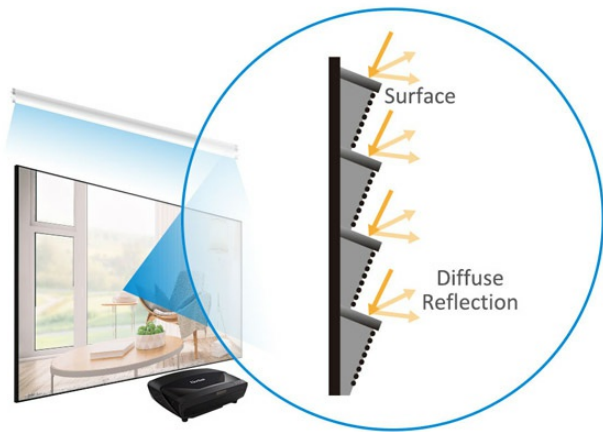
Spectacular Size With a Narrow Bezel

Optional BrilliantColorPanel™ with its breathtaking 100"/120" image size and 1cm narrow bezel, it's guaranteed to make a splash.



Shipping and Installation Made Easy

The design of optional BrilliantColorPanel™ is light and easy to transport, consisting of a roll-able soft screen that weighs in at a mere 12.5kgs (100"), making shipping and installation simple.



Powerful Speaker Design, Powerful Sound

LS820's speaker system comes equipped with a 3" mid-range speaker paired with a 1" silk tweeter for achieving a more balanced, lifelike sound quality. The speaker's ported design allows sound to be thrown further for louder, more concentrated sound.

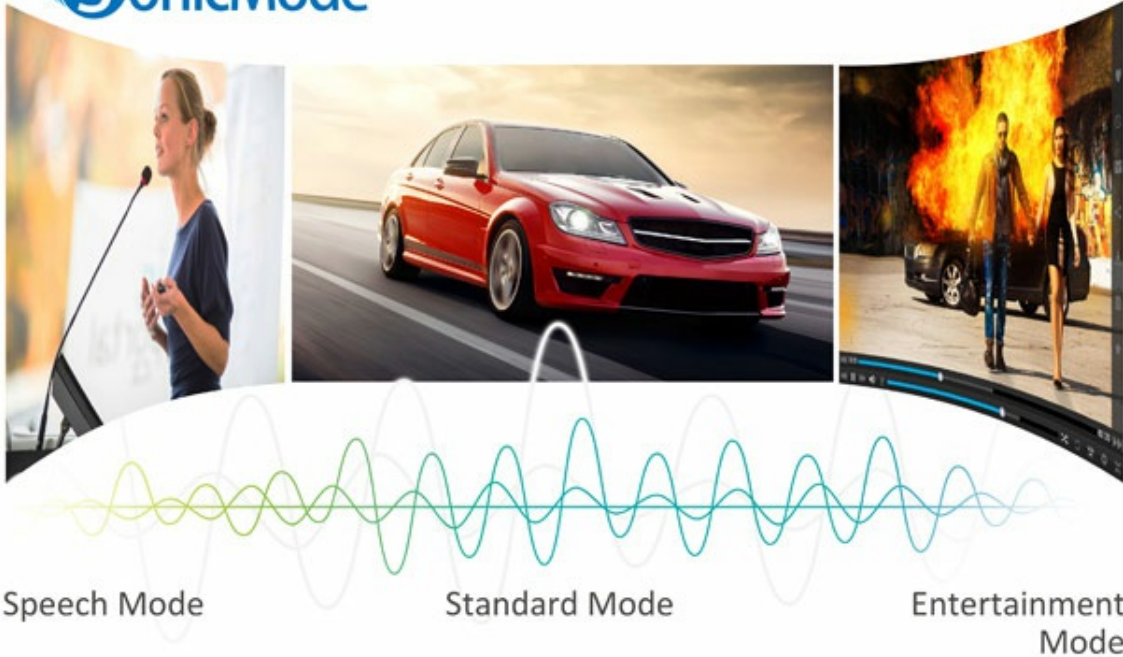
Unlike traditional projector speakers, LS820's high-volume chamber with ViewSonic's proprietary SonicExpert® technology delivers the absolute best-in-class sound for a premium audio experience.



SonicMode for Enhanced Audio Performance

LS820's embedded DSP chip along with SonicMode technology is able to fine tune sound performance and provides 3 different scenario application modes to choose from.

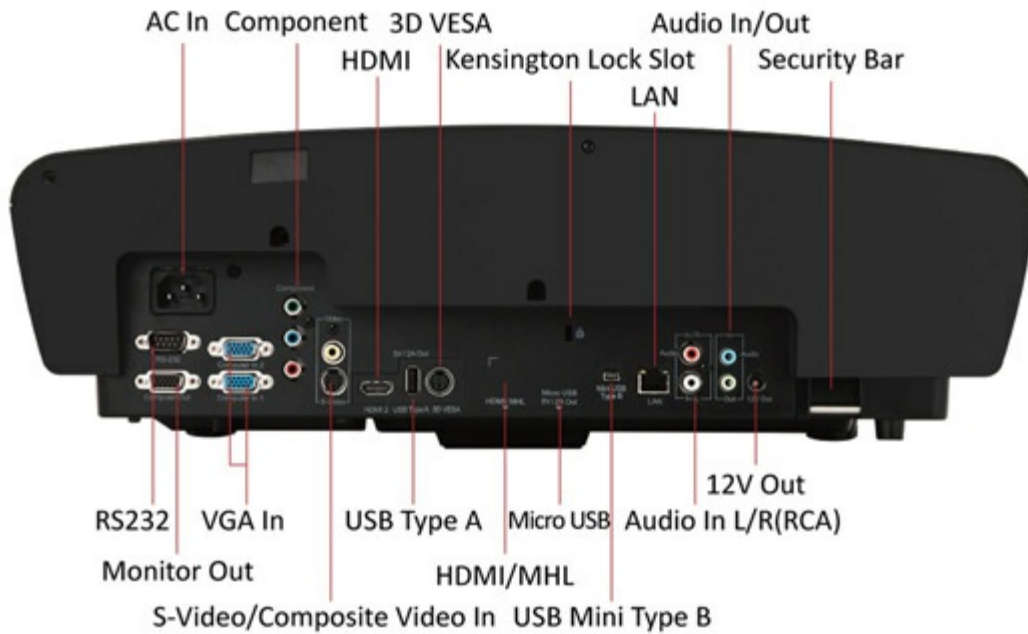
1. Standard: balanced sound for most types of audio
2. Speech: best for spoken word and conference calls
3. Entertainment: tuned for music & video with more bass



Speech Mode

Standard Mode

Entertainment Mode



Technical Specifications

DISPLAY

Type	TI DMD 0.65
Resolution	1920x1080 (Full HD)

	F Stop / Focal Length mm	2.4
	Focus / Zoom	Adjustable by OSD menu / N/A
	Keystone	H:+/-30° , V:+30°/-12°
	Auto keystone	Yes (Vertical)
	Display Size	80" ~ 150"
	Throw Distance	0.43 m ~ 0.8 m
	Throw Ratio	0.23
	Lamp Power	390 W
	Lamp Life (Normal / SuperEco Mode)	15,000 / 20,000 (Ecco mode) (hours)
	Brightness	3,500 ANSI Lumens
	Contrast Ratio	100,000:1
	Color Depth	1.07 Billion Colors (30 bits per color)
	Color Wheel	Dual Wheel System (RYGW) / 7200rpm
	Optical Offset	137.6 +-5%
AUDIO	Speaker	8W Cube x2
INPUT SIGNAL	Video	480i and 576i, 480p and 576p, 720p, 1080i, 1080p
	Frequency (H/V)	15 ~ 100 KHz / 24 ~ 120 Hz
COMPATABILITY	PC	Support up to 1920x1080@60Hz
	Mac	Support up to 1920x1080@60Hz
CONNECTOR	VGA Input	x2
	VGA Output	x1
	Digital Input	HDMI x1 / HDMI (MHL2.0) x1
	Composite Input	RCA x1
	S-Video Input	x1
	Component	x2 (Share with VGA input)
	Audio Input	3.5mm mini jack x1, RCA(L/R) x1
	Audio Output	3.5mm mini jack x1, RCA(L/R) x1
	Control	RS-232
	USB	Type A x1 (Power Charging) / Mini type B x1 (Maintenance and mouse control) / Micro USB Wire x1 (Power Charging)
	Lan	x1
	3D VESA	x1
	DC Output	x1
POWER	Voltage	100~240Vac 50/60Hz (Auto Switching)
	Power Consumption	450 W (Max.)
	Standby	<0.5W
OPERATING CONDITION	Temperature	0°C ~ 35°C (32°F ~ 104°F)
	Humidity	0% ~ 90% (non-condensing)
NOISE LEVEL	Normal / Eco Mode	28dB (Eco Mode)
DIMENSIONS	Physical (WxDxH)	508 x 392 x165 mm/ 20" x 15.43 " x 6.5"
WEIGHT	Net	13.6 kgs / 29.96 lbs
REGULATIONS		CB, cTUVus, FCC, CE. EMC, CCC, GS
PACKAGE CONTENTS		Power Cord, 1.8m, black 1 /VGA Cable, 1.8m, black x 1 / Remote Control with Batteries (With Laser pointer) x1 / Quick Start Guide (one sheet version) x1 / ViewSonic CD Wizard (With User Manual) x 1 /HDMI Cable

