

# VG2433SMH 24" Ergonomic Business Monitor



VG2433Smh

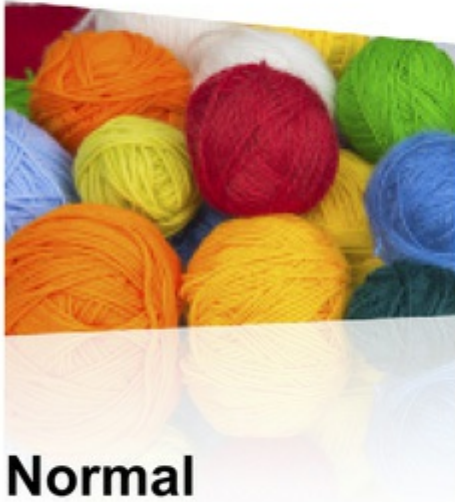


The ViewSonic VG2433Smh is a high-performance, ergonomic 24" (23.6" viewable) LED display that offers a cost-effective solution for corporations and SMBs, as well as educational and government institutions. Designed to offer a more efficient and comfortable working environment, it is fully ergonomic with 340° swivel, 90° pivot, -5° to 25° tilt, and 100mm height adjustment. Along with the SuperClear® image enhancement technology for lifelike colour performance and 178/178° wide viewing angles, the VG2433Smh boasts Full HD 1920 x 1080 resolution and color management to deliver consistently brilliant colour performance at any angle. With HDMI, DVI and D-Sub inputs to connect high-definition devices, the display also integrates dual stereo 2W speakers to provide the total multimedia package. An integrated Eco-mode lets users optimize the backlight level, lowers power consumption and prolong the lamp life for a lower total cost of ownership – making the VG2433Smh the best choice for your organization.



**Full HD 1080p for Superior Pixel Performance**

The ViewSonic VG2433Smh features Full HD 1920 x 1080 resolution for excellent pixel-by-pixel image performance. Experience the most amazing clarity and detail whether it be while gaming or enjoying the latest in multimedia entertainment. A 16:9 widescreen ratio minimizes eye fatigue even after hours of playtime, and is perfectly compatible with multi-window viewing without toggling.



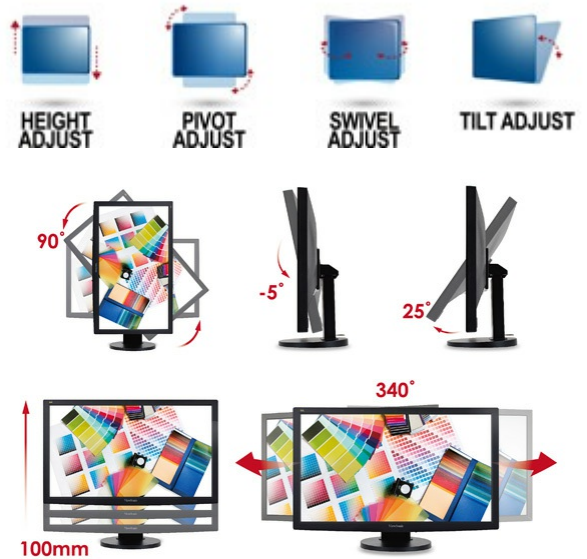
**SuperClear® Image Enhancement Technology with wide viewing angles**

SuperClear® Image Enhancement Technology delivers the best colour performance and 178 degrees viewing angle both horizontally and vertically. Experience accurate and vivid colours with consistent levels of brightness whether looking at the screen from above, below, the front, or the side—with no colour distortion or decay.



**Ergonomic DESIGN Ergonomic Designs Made for Comfort and Productivity**

ViewSonic's VG2433Smh is ergonomically designed to offer users the flexibility they need to increase their productivity – and comfort. Design features include 340° swivel, 90° pivot, 0-100mm height, and -5° to 25° tilt adjustments, allowing the screen a greater range of movement.



**LED Energy-Saving LED Backlight**

**Eco-mode conserves more energy**

The VG2433Smh utilises an energy-saving LED backlight that consumes less power than conventional CCFL backlight displays, and has an extended lifespan of up to 30,000 hours. This provides for a lower overall cost of ownership, along with a higher ROI, making this display a great long-term investment.



**and cuts costs**

ViewSonic's proprietary Eco-mode energy-saving feature is built into all LED displays, offering "Optimize (75%)" or "Conserve (50%)" settings that save up to 50% in electricity costs and prolongs lamp life. In low ambient light, Eco-mode adjusts brightness and improves visibility, while reducing eye fatigue.



**Better colour accuracy with colour management**

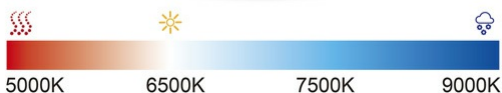
**COLOR ADJUST**

ViewSonic's built-in colour management system maintains strict standards for colour temperature and white balance correction to ensure the most accurate white level for image rendering. Different OSD colour settings (Bluish, Cool, Native, Warm) allow you to match different colour temperature settings. Calibrated to be 100% consistent from screen-to-screen, each monitor displays the exact same colours and sRGB settings as your original HD-device source images.



**HDMI for Full HD Content Connectivity**

ViewSonic VG2433Smh is equipped with HDMI input for high definition audio and video connectivity to PC, laptop and multimedia entertainment devices.



**Dual integrated stereo speakers**

**VESA-Mountable**





The ViewSonic VG2433Smh has two integrated 2W stereo speakers for enhanced multimedia performance with crystal-clear stereo sound.



### Colour Adjust

ViewSonic's built-in colour management system maintains strict standards for colour temperature and white balance correction to ensure the most accurate white level for image rendering. Different OSD colour settings (Bluish, Cool, Native, Warm) allow you to select preferred colour temperature on display.



The ViewSonic VG2433Smh features a 100 x 100mm VESA-mountable design that allows you to mount the display on a monitor stand, mounting bracket or on a wall.

### Pixel Performance Guarantee and 3-Year Limited Warranty

One of the aspects that makes ViewSonic a market leader in displays is its dedication to quality. ViewSonic is committed to using the highest grade panels and offers the industry's leading pixel performance policy.

Pixel Performance	LED Display
ISO9241-3: 2008 Standard	2 Bright 2 Dark 5 Total
<b>ViewSonic Pixel Guarantee</b>	<b>2 Bright 2 Dark 3 Total</b>

## Technical Specifications

<b>LCD</b>	Type	24" 16:9 (23.6" vivewable) Colour a-Si TFT Active Matrix LCD (ADS)	
	Optimum Resolution	1920 x 1080	
	Contrast Ratio	1000:1 (typ)	
	Viewing Angles	178° / 178° (typ)	
	Response Time	4ms (GtG)	
	Panel Surface	Anti-Glare	
	Display Area	521.28(H) X 293.22 (V)mm	
	Colour Support	16.7M	
	Brightness	250 cd/m2	
	Dynamic Contrast Ratio	50M:1	
	Backlight	WLED light bar	
	Backlight Life	30,000 Hrs	
	<b>Connector</b>	Power	Internal Power Board, 3-pin plug (CEE22)
		Video	VGA x1, DVI x1, HDMI x1
Audio Out		3.5mm Headphone Out	
Audio Input		3.5mm Connector	
Speaker		2-Watt x 2	
<b>DIMENSIONS</b>	Physical With Stand	566 x 382.4 x 204.3 mm	
	Physical Without Stand	566.0 x 343.2 x 51 mm	
	Packaging	664 x 422 x 169 mm	
<b>REGULATIONS</b>	CU, UkrSEPRO + DoC,Erp, REACH SVHC List & DoC, TCO		
<b>PACKAGE CONTENTS</b>	LCD Display, Power Cable, VGA cable, DVI cable, Audio cable, Quick Start Guide, ViewSonic Wizard CD-ROM		
<b>INPUT SIGNAL</b>	Analogue	VGA	
	Digital	HDMI / DVI	
<b>POWER</b>	Optimize	19 W (typ)	
	Conserve	14 W (typ)	
	Voltage	AC 100-240V (Universal); 50/60 Hz	
	Consumption	22 W (typ)	
<b>VESA® MOUNT</b>	100 x 100 mm		
<b>ERGONOMICS</b>	Height Adjustment	100 mm	
	Pivot	90°	
	Tilt	25° ~ - 5°	
	Swivel	340°	
<b>WEIGHT</b>	Gross	7.12 Kg	
	Net With Stand	5.53 Kg	
	Net Without Stand	3.95 Kg	

---

**OPERATING  
CONDITIONS**

Temperature      0°C ~ 40°C

---

## **ViewSonic® Limited Warranty**

---

ViewSonic provides customers with the security of a manufacturers warranty against defected products. The type and duration of the applicable warranty service varies by product type, country of purchase and can also vary on an individual basis according to customer requirements agreed at time of purchase. The warranty will expire after the end of the warranty period.

---

For more product information, visit us at **[www.viewsoniceurope.com](http://www.viewsoniceurope.com)**

All rights reserved by ViewSonic Corporation. All other Corporate names and trademarks are the property of their respective companies. E&EO. All prices and specifications are subject to change without written notice. Images are for illustrative purpose only. Terms & Conditions Apply.