

EP2202r

**22" (21.6" VIEWABLE)
DIGITAL SIGN BOARD**

Impactful High-Definition Digital Poster

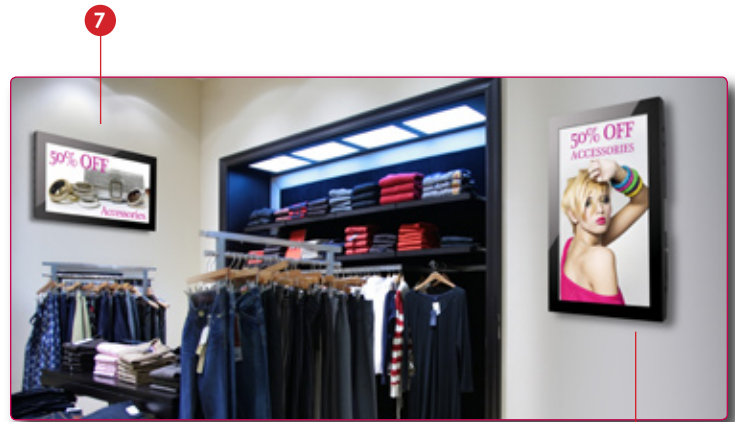
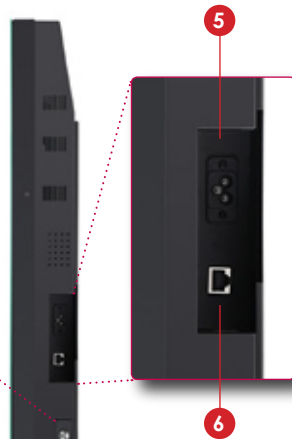
ViewSonic's new ePoster products make it easy to replace those old backlit printed signs with new impactful high-definition digital posters. These sleek new displays feature built-in memory for storing high impact graphics as well as a powerful management tool featuring a content scheduler, duration timer and special effects editor for image transitions. Retail messaging is easy with ViewSonic's new ePoster family of retail displays. Information is disseminated through the ePoster's internal network connection or locally via the USB port. ViewSonic's new ePoster products are available in various sizes and models and can be free standing or wall mounted. Great for announcing special promotions, computer-generated information or communicating multimedia with photos, audio, signage, and video.



- > **22" (21.6" viewable) Full HD 1366x768 display resolution**
- > **300 nits of brightness with 2,500:1 contrast ratio**
- > **Embedded media player**
Supports HD photos (JPEG), music (MPEG1) and text
- > **ePoster Manager Express**
Content scheduling and management software – MS Windows compatible
- > **2GB CF memory**
Allows for thousands of images, hundreds of video clips with music
- > **Easy loading of content through USB or Network (RJ45) Ethernet**
- > **Built in 2Wx2 audio**

ViewSonic®
See the difference® 

EP2202r 22" (21.6" VIEWABLE) DIGITAL SIGN BOARD



DISPLAY	Diagonal	22" (21.6"/54.9cm viewable)
	Resolution	1366x768 dots
	Color	Over 16.7M color (depending on video card used)
	Brightness	300 cd/m ² (typ)
	Contrast Ratio	2500:1 (typ)
	Response Time	8ms (typ gray-to-gray)
	View Angle	Up and down 178°, left and right 178° (typ) @ CR>10
CONNECTIVITY	Ethernet	RJ45 (10/100M)
	Storage	2GB Compact Flash
	USB	2.0 (x1)
FILE FORMATS	Music	LPCM, sampling rate: 32-48KHZ/16-24 bit MPEG1 Layer 3, sampling rate: 32-48KHZ, bit rate: 32-320Kbps
	Photo	JPEG baseline 5120x3840, progressive 2048x1536
AUDIO	Speakers	2W (x2)
CONTENT MANAGEMENT	Software	ePoster Manager Express
	Operating System	MS Windows
POWER	Supply	3.2-1.38 A @ 100-240VAC, 50/60Hz
	Consumption	Max 60W
	Save	Off < 1W
OPERATING CONDITIONS	Temperature	32-122° F (0-50° C)
	Humidity	20-90% (non-condensing)
STORAGE	Temperature	-4-158° F (-20-70° C)
ENVIRONMENT	Humidity	10-90% (non-condensing)
DIMENSIONS (WxHxD)	Physical	15.0" x 26.4" x 1.2" (380mm x 670mm x 31mm)
	WEIGHT	Net
Gross		35.3 lbs. (16.0 kg)
WALL MOUNT		360mm x 350mm
REGULATIONS		FCC, ICES 003, CE
MTBF		50,000 hrs.
PACKAGE CONTENTS		ePoster, power cord, remote control with batteries, key, wall mount bracket, Quick Start Guide, User Manual and Software on CD



ViewSonic Corporation's OMS & EMS have been registered to ISO 9001 & ISO 14001, respectively, by TUV NORD.

Sales: (888) 881-8781 • SalesInfo@ViewSonic.com • ViewSonic.com

Specifications subject to change without notice. Selection, offers and programs may vary by country; see your ViewSonic representative for complete details. Corporate names, trademarks stated herein are the property of their respective companies. Copyright © 2011 ViewSonic Corporation. All rights reserved. [15563-00B-03/11] EP2202r-1

- 1 – Stylish Glossy Design
- 2 – Speaker
- 3 – Wall Mount Bracket
- 4 – Security Lock Door
CF Card and USB 1.1

- 5 – Power Port
- 6 – Ethernet RJ45
- 7 – Horizontal Format
- 8 – Vertical Format

ViewSonic®
See the difference®

For more product information, visit us on the web at ViewSonic.com