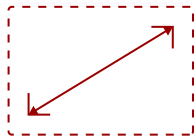


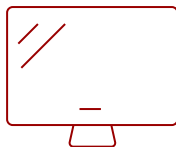
31" CONFIGURABLE ALL-IN-ONE LED DISPLAY | LDC031-150 - P1.5

Key Features

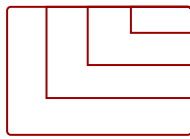
- All-in-one design with configurable screen size and aspect ratio.
- LED cabinets featuring a 4:3 aspect ratio for easy portrait configurations and flexible layouts.
- Enhanced durability with Glue-on-board (GOB) surface treatment.
- Centralized and efficient management via LAN control.
- Detachable system control box for easy access and minimalist aesthetics.
- Ultra-slim design that seamlessly blends into any space.
- Hassle-free installation and maintenance.



31"
DISPLAY



PANEL



VGA(640 x 480) to 4K(3840 x 2160@60hz)
RESOLUTION



Product Description

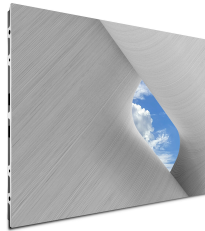
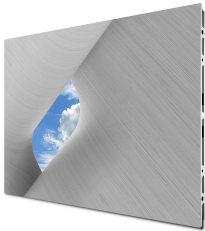
The ViewSonic® LDC series redefines what's possible in Direct View LED displays. By combining multiple LDC031 LED cabinets, you can create diverse video walls for engaging digital signage. Each cabinet features a native 4:3 aspect ratio for easy portrait configurations and flexible layouts. With Glue-on-Board (GOB) surface treatment, the IP54-rated modules are protected against collisions, dust, and moisture, making them suitable for public spaces like lobbies and shopping malls. At just 31mm thick, the display achieves a 99% screen-to-body ratio, offering an impressive viewing experience. Enhanced operational efficiency is facilitated through centralized management via LAN connectivity.

Specifications

UPC	766907026399
OS	Android 9.0
CPU	RK3399
Memory	DDR4 4GB
Storage	Total 32GB (26GB available storage) (26GB available storage)
Internal Speakers	30W x 2
PC Resolution (max)	VGA(640 x 480) to 4K(3840 x 2160@60hz)
Mac® Resolution (max)	480p, 576p, 720p, 1080p, 2160p
HDMI 2.0 (with HDCP 2.2)	4
HDMI 1.4 Out (with HDCP 1.4)	1
Audio-out (HDMI ARC)	2
USB Type A	2
USB 3.0	1
USB 2.0	2
USB Type C	1
RS232	1
Ethernet LAN (RJ45)	3
RJ45 Input (Internet)	1
RJ-45 LAN Port Output	2
IR in	1
Voltage	100-120V/30A~ 50/60Hz or 220-240V/15A~ 50Hz(vary by country)
Consumption (max)	105W
Consumption (typical)	35W
Stand-by	<0.5W
On Screen Display	Yes
Remote Control	Yes
Temperature	32-104° F (0 - 40° C)
Humidity (non-condensing)	20-80%
Net (lbs)	11
Net (kg)	5
Physical (in.)	23.62x13.29x1.2inches per cabinet
Physical (mm)	600 x 337.5 x 31mm per cabinet
Warranty	3-year limited warranty on parts and labor, on-site service
Recycle/Disposal	Please dispose of in accordance with local, state or federal laws.
Regulations	cTUVus, FCC, RoHS
Wifi	2.4G/5G Hz

Display Type	Direct View LED
Screen Size	31"
Viewable Area (in.)	25.2 (H) x 18.9(V)
LED Pitch Size (mm)	1.538
LED Grayscale	13 bits
Display Resolution	416x312
Refresh Rate	3,840Hz
Aspect Ratio	16:9
Static Contrast Ratio	6,500:1
Backlight Life (Hours)	100,000
Brightness	600 nits (100 levels adjustable)
Viewing Angles	170° horizontal, 170° vertical

UPC: 766907026399



Contact Sales

ViewSonic.com

888.881.8781

email:

salesinfo@viewsonic.com