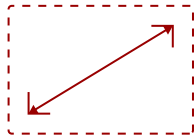
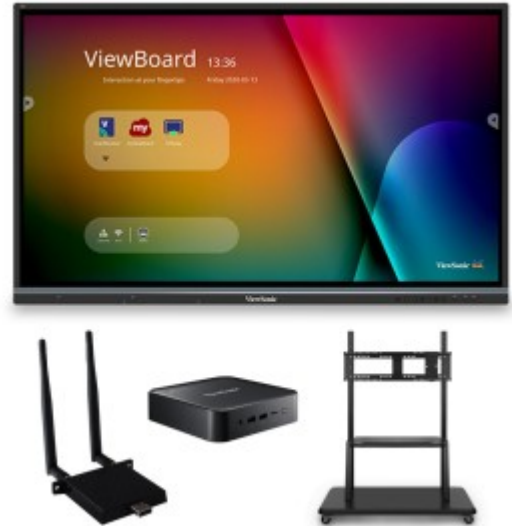


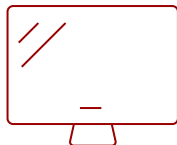
IFP7550-C2 - 75" VIEWBOARD INTERACTIVE FLAT PANEL BUNDLE WITH CHROMEBOX

Key Features

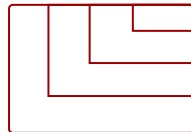
- **ULTRA HD RESOLUTION:** 75 Inch 4K Ultra HD (3840x2160p) interactive display
- **ADVANCED TOUCH:** 40-point multi-touch lets users write on the display with their fingers and stylus pens
- **INTEGRATED SOFTWARE:** The myViewBoard suite includes Whiteboard, ViewBoard Cast, and more for better engagement
- **BETTER SOUND:** Built-in 40W stereo soundbar delivers optimal sound
- **FLEXIBLE CONNECTIVITY:** Powerful quad-core processor and versatile connectivity options with 65W PD USB-C (HDMI, RJ45, and USB ports)
- **EVERYTHING TO GET STARTED:** This bundle includes the interactive display, wireless AC adapter, Chromebox and mobile mobile cart
- **REMOTE MANAGEMENT:** Schedule updates and monitor device status with the built-in myViewBoard® Manager software
- **PEACE OF MIND:** Industry-leading 3-year standard warranty with optional extensions and robust support services



75"
DISPLAY



PANEL



RESOLUTION



Product Description

Ideal for education environments, this all-in-one ViewBoard Bundle includes a 75" ViewBoard IFP7550 4K interactive flat panel, a VB-WIFI-001 WiFi and Bluetooth adapter, a NMP760 Chromebox, and a VB-STND-001 stand.

Specifications

More Information

OS	Android 8.0
GPU	ARM Mali-G51

CPU	ARM Quad Core Cortex A73+A53
CPU Processor Speed	1.1GHz
Memory	3GB
Storage	32GB
Internal Speakers	10W (x2)
Subwoofer	15W (x1)
HDMI 2.0 In	3
HDMI Out	1
VGA	1
3.5mm Audio In	1
3.5mm Audio Out	1
SPDIF Audio Out	1
USB 3.0	4
USB 2.0	3
Slot-in PC Slot	1
USB B Touch Port	2
RS232	1
Ethernet LAN (RJ45)	1
WIFI Module Slot	1
Voltage	100-240 VAC
Consumption (typical)	138W
Stand-by	<0.5W
On Screen Display	Input, Volume, Backlight, Audio, Screen, Display, Adjust
Temperature	32-104° F (0 - 40° C)
Humidity (non-condensing)	10-90%
Touch Technology	Slim IR
Touch Points	20-Point Touch
Tip Detection	Dual tips, 2.5mm and 8mm
Net (lbs)	207.54
Gross (lbs)	255.39
Net (kg)	94.14
Gross (kg)	115.84
Packaging (in.)	76.0 x 44.9 x 11.0
Physical (in.)	67.3 x 40.2 x 3.5
Packaging (mm)	1930.0 x 1140.0 x 280.0
Physical (mm)	1710.0 x 1020.0 x 90.0

VESA Compatible	800 x 400 mm
Warranty	3-year limited warranty on parts, labor and backlight, onsite warranty
Recycle/Disposal	Please dispose of in accordance with local, state or federal laws.
Package Contents	IFP7550 display, stylus pen x 2, power cable, remote control with batteries, ViewSonic Wizard CD (User Guide), Quick Start Guide
Regulations	cTUVus, FCC, ENERGY STAR 7.0, Mexico Energy, CE, CB, RoHS, ErP, WEEE
Battery Chemistry	Lithium
Ethernet LAN	10/100/1000 Mbps
Display Type	LCD
Screen Size	75"
Viewable Area (in.)	75
Light Source	LED
Display Resolution	3840 x 2160
Aspect Ratio	16:9
Static Contrast Ratio	1,200:1
Backlight Life (Hours)	50,000
Brightness	350 cd/m2
Response Time (Typical GTG)	8ms
Viewing Angles	178° horizontal, 178° vertical
Panel Surface	Anti-glare 7H tempered glass



Contact Sales

ViewSonic.com

888.881.8781

email:

salesinfo@viewsonic.com