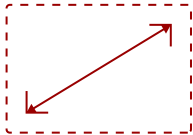


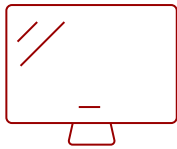
LS625X - 1024 X 768 RESOLUTION, 3,200 ANSI LUMENS, 0.49 THROW RATIO

## Key Features

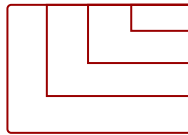
- Bright Images in any Environment
- Large Images in Small Spaces
- Long-lasting Laser Phosphor Light Source
- Horizontal and Vertical Keystone Correction
- Compatible with Interactive Whiteboard Module



60 - 300 in. / 1.5 - 7.6 m  
**DISPLAY**



**PANEL**



1920 x 1080  
**RESOLUTION**



## Product Description

Featuring 1024x768 XGA resolution and 3,200 lumens of brightness, the ViewSonic® LS625X short throw laser projector is an ideal projection solution for education environments. Designed with a laser phosphor light source lasting up to 20,000 hours, and a sealed optical engine with a waveform air filter that protects against dust and moisture, this projector delivers long-term, virtually maintenance-free usage for any classroom. With its 0.49 short throw ratio and horizontal/vertical keystoneing, the LS625X makes installation a hassle-free experience. What's more, the short throw ratio allows you to place the projector just a few feet from a wall or screen to give you a huge image for less cost than a comparably sized display. Crestron and AMX certification delivers network management capabilities, while exclusive SuperColor™ technology offers a wide color range for true-to-life images in any classroom.

## Specifications

	More Information
<b>UPC</b>	766907979916
<b>Light Source</b>	Laser

<b>Display Resolution</b>	XGA (1024x768)
<b>Display Resolution</b>	1024 x 768
<b>Brightness (Lumens)</b>	3,200 ANSI
<b>Screen Size</b>	60 - 300 in. / 1.5 - 7.6 m
<b>Throw Distance</b>	2.1 - 10.4 ft / 0.6 - 3.2 m
<b>Throw Ratio</b>	0.49
<b>Keystone</b>	Vertical (+/- 40°)
<b>Lens</b>	Fixed Zoom
<b>Light Source Life, Normal (hours)</b>	20000
<b>Light Source Life, Dynamic Eco-Mode (hours)</b>	20000
<b>Color Depth</b>	1.07B Color (R/G/B 10bit)
<b>Aspect Ratio</b>	4:3
<b>Input Lag</b>	37ms
<b>Frequency Horizontal</b>	15K~102KHz
<b>Frequency Vertical</b>	23~120Hz
<b>PC Resolution (max)</b>	1920 x 1080
<b>Mac® Resolution (max)</b>	1920 x 1080
<b>Ethernet LAN (RJ45)</b>	1
<b>3.5mm 12V Trigger</b>	1
<b>3.5mm Audio Out</b>	1
<b>3.5mm Audio In</b>	1
<b>Control (RS232)</b>	1
<b>HDMI 1.4 In</b>	1
<b>HDMI 1.4 (with HDCP 1.4)</b>	1
<b>VGA In</b>	2
<b>VGA Out</b>	1
<b>Composite RCA Video In</b>	1
<b>S-Video In</b>	1
<b>Mini USB</b>	1
<b>Internal Speakers</b>	10W (x1)
<b>Consumption (typical)</b>	305W
<b>Stand-by</b>	<0.5W
<b>Physical Controls</b>	Power, keystone/arrow keys, left/blank, menu/exit, right/panel key lock, mode/enter, auto, source
<b>On Screen Display</b>	Display, Image, Power Management, Basic, Advanced, System, Information (See user guide for full OSD functionality)
<b>Temperature</b>	32-104° F (0 - 40° C)

<b>Humidity (non-condensing)</b>	0-90%
<b>Kensington Lock Slot</b>	1
<b>Net (lbs)</b>	13.6
<b>Gross (lbs)</b>	15.4
<b>Net (kg)</b>	6.2
<b>Gross (kg)</b>	7.0
<b>Packaging (in.)</b>	19.1 x 9.4 x 15.4
<b>Physical (in.)</b>	15.1 x 5.8 x 11.5
<b>Packaging (mm)</b>	485.0 x 238.0 x 390.0
<b>Physical (mm)</b>	383.0 x 147.0 x 291.0
<b>AV Control</b>	AMX Certified, Crestron Certified, PJ Link Certified
<b>Regulations</b>	FCC, cTUVus, ROHS
<b>Package Contents</b>	LS625X projector, power cable, VGA cable, remote control, Quick Start Guide
<b>Warranty</b>	Three-year limited warranty on parts and labor, 1st year free Express Exchange® service. (One year Express Exchange Service requires product registration).
<b>Recycle/Disposal</b>	Please dispose of in accordance with local, state or federal laws.

UPC: 766907979916



### Contact Sales

[ViewSonic.com](http://ViewSonic.com)

888.881.8781 ☎

email:

[salesinfo@viewsonic.com](mailto:salesinfo@viewsonic.com)