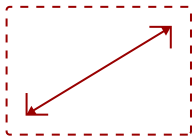


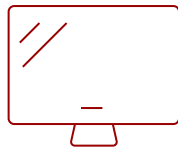
VG2253 - 22" 1080P ERGONOMIC IPS MONITOR WITH HDMI AND DISPLAYPORT

Key Features

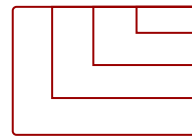
- SuperClear IPS Panel Technology
- Seamless Viewing Experience
- Versatile Connectivity
- Ergonomic Design
- Full HD 1080p Resolution



22
DISPLAY



IPS
PANEL



1920 x 1080
RESOLUTION



Product Description

With future-proof connectivity and advanced ergonomics, the ViewSonic® VG2253 is a productivity-boosting monitor perfect for corporate, government, and education environments. Designed with SuperClear® IPS panel technology for wide-angle viewing and incredibly vivid colors, this monitor also features a 3-sided frameless design for a seamless viewing experience in multi-monitor setups. For maximum comfort and a customized fit, a robust fully ergonomic stand gives you tilt, pivot, swivel, and height-adjustable options. In addition, VDI client endpoints can be easily attached to the stand's integrated client mount, saving desktop space and minimizing cable clutter without interfering with ergonomic functionality. Extensive connectivity options include VGA, HDMI, DisplayPort, and Mini DisplayPort so that you can connect to a variety of HD and analog devices - today and tomorrow.

Specifications

More Information

UPC	766907856316
Screen Size	22
Viewable Area (in.)	21.5
Panel Type	IPS
Display Resolution	1920 x 1080
Static Contrast Ratio	1,000:1
Dynamic Contrast Ratio	20,000,000:1
Light Source	LED
Brightness	250 cd/m2

Colors	16.7M
Color Space Support	6-bit+A-FRC
Aspect Ratio	16:9
Response Time (Typical GTG)	14ms
Response Time (GTG w/OD)	7ms
Viewing Angles	178° horizontal, 178° vertical
Backlight Life (Hours)	30,000
Panel Surface	Anti-glare, Hard coating (3H)
PC Resolution (max)	1920 x 1080
USB Type A	2
USB Type B	1
3.5mm Audio In	1
3.5mm Audio Out	1
VGA	1
HDMI 1.4 In	1
DisplayPort	1
Mini DisplayPort	1
Internal Speakers	2W (x2)
Eco Mode (Conserve)	13W
Eco Mode (optimized)	15W
Consumption (typical)	17W
Consumption (max)	41W
Voltage	AC 100-240V (universal), 50-60Hz
Stand-by	0.5W
Cable Organization	No
Kensington Lock Slot	1
Physical Controls	1,2, Up, Down, Power
On Screen Display	Auto Image Adjust, Contrast/Brightness, Input Select, Audio Adjust, Color Adjust, Information, Manual Image Adjust, Advanced Image Adjust, Setup Menu, Memory Recall (See user guide for complete OSD functionality)
Temperature	32-104° F (0 - 40° C)
Humidity (non-condensing)	20-90%
VESA Compatible	100 x 100 mm
Frequency Horizontal	15 ~ 86KHz
Frequency Vertical	24 ~ 76Hz
Analog Sync	Separate Sync / Composite Sync / Sync on Green
Digital Sync	TMDS, PCI-E

Height Adjust	130 mm / 5.1 in
Swivel	360°
Pivot (Right/Left)	90° / 0°
Tilt (Forward/Back)	5° / 20°
Regulations	cULus, FCC-B, ICES003, Energy Star 7.0, EPEAT, MX-CoC, Mexico Energy
Net (lbs)	11.1
Net Without Stand (lbs)	6.6
Gross (lbs)	14.8
Net (kg)	5.1
Net Without Stand (kg)	3
Gross (kg)	6.7
Packaging (in.)	26.2 x 15.2 x 7.4
Physical (in.)	19.7 x 16.3 x 9.2
Physical Without Stand (in.)	19.7 x 11.9 x 50.6
Packaging (mm)	665 x 394 x 187
Physical (mm)	499.0 x 413.7 x 233.3
Physical Without Stand (mm)	499.2 x 302.1 x 50.6
Package Contents	LCD Display, Power Cable , Mini DP to DP Cable , USB3.0 Upstream Cable , Quick Start Guide, ViewSonic Wizard CD-ROM
Recycle/Disposal	Please dispose of in accordance with local, state or federal laws.

UPC: 766907856316



Contact Sales

ViewSonic.com

888.881.8781

email: salesinfo@viewsonic.com