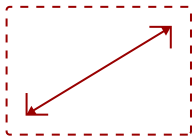


## VG2239SMH - 22" 1080P ERGONOMIC MONITOR WITH HDMI, DISPLAYPORT, AND VGA

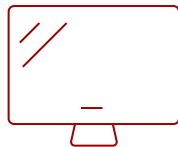
## Key Features

---

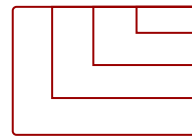
- 22 Inch Full HD (1920x1080p) LED monitor with 60Hz refresh rate
- Advanced ergonomics (tilt, swivel, rotate and height) for all-day comfort
- Flicker-Free technology and Blue Light Filter for reduced eye fatigue
- Optimized view settings offers "Game," "Movie," "Web," "Text," and "Mono" presets
- The VG2239SMH supports laptops, PCs, Macs and more with HDMI, USB, DisplayPort, VGA inputs



22  
DISPLAY



MVA  
PANEL



1920 x 1080  
RESOLUTION



## Product Description

---

The ViewSonic® VG2239Smh is a 22" (21.5" viewable) Full HD LED multimedia monitor with future-proof connectivity and full ergonomic functionality ideal for corporate, government and education. With SuperClear® MVA panel technology for wide-angle viewing, and 20M:1 dynamic contrast ratio, this monitor delivers incredibly sharp images and video playback. Integrated with HDMI, DisplayPort, VGA and 2 USB ports, the VG2239Smh allows flexible connection to PC systems, laptops and other multimedia peripheral devices. ViewSonic's exclusive ViewMode provides intuitive presets to deliver optimized screen performance in different applications. In addition, Flicker-Free and Blue Light Filter technology help to eliminate eye strain from extended viewing periods.

## Specifications

---

### More Information

<b>UPC</b>	766907801811
<b>Screen Size</b>	22
<b>Viewable Area (in.)</b>	21.5
<b>Panel Type</b>	MVA
<b>Display Resolution</b>	1920 x 1080
<b>Static Contrast Ratio</b>	3,000:1
<b>Dynamic Contrast Ratio</b>	20,000,000:1
<b>Light Source</b>	LED
<b>Brightness</b>	250 cd/m2

<b>Colors</b>	16.7M
<b>Response Time (Typical GTG)</b>	5ms
<b>Viewing Angles</b>	178° horizontal, 178° vertical
<b>Backlight Life (Hours)</b>	40,000
<b>Panel Surface</b>	3H Anti-glare, hard-coating
<b>PC Resolution (max)</b>	1920 x 1080
<b>Mac® Resolution (max)</b>	1920 x 1080
<b>USB Type A</b>	2
<b>USB Type B</b>	1
<b>3.5mm Audio In</b>	1
<b>3.5mm Audio Out</b>	1
<b>HDMI In</b>	1
<b>VGA</b>	1
<b>DisplayPort</b>	1
<b>Internal Speakers</b>	2-watt (x2)
<b>Eco Mode (Conserve)</b>	15W
<b>Eco Mode (optimized)</b>	18W
<b>Consumption (typical)</b>	20.5W
<b>Consumption (max)</b>	30W
<b>Voltage</b>	AC 100-240V (universal), 50-60Hz
<b>Cable Organization</b>	No
<b>Kensington Lock Slot</b>	1
<b>Physical Controls</b>	1, 2, Down, Up, Power
<b>On Screen Display</b>	Auto Image Adjust, Contrast/Brightness, Input Select, Audio Adjust, Color Adjust, Information, Manual Image Adjust, Setup Menu, Memory Recall (See user guide for complete OSD functionality)
<b>Humidity (non-condensing)</b>	10-90%
<b>VESA Compatible</b>	100 x 100 mm
<b>Frequency Horizontal</b>	24~82kHz
<b>Frequency Vertical</b>	50~75Hz
<b>Analog Sync</b>	Separate Sync, Composite Sync, Sync on Green
<b>Height Adjust</b>	135 mm / 5.3 in
<b>Swivel</b>	360°
<b>Pivot (Right/Left)</b>	90° / 0°
<b>Regulations</b>	WEEE, RoHS, CE, CB, WHQL, cULus, ICES003, FCC-B, Mexico Energy, EMC, EAC, UkrSEPRO + DoC, ErP, REACH SVHC List & DoC, EEL, UL-MX-CoC
<b>Net (lbs)</b>	10.6
<b>Net Without Stand (lbs)</b>	7.4

<b>Gross (lbs)</b>	14.9
<b>Net (kg)</b>	4.8
<b>Net Without Stand (kg)</b>	3.3
<b>Gross (kg)</b>	6.8
<b>Packaging (in.)</b>	22.9 x 19.0 x 7.4
<b>Physical (in.)</b>	20.2 x 16.5 x 9.4
<b>Physical Without Stand (in.)</b>	20.2 x 12.0 x 2.2
<b>Packaging (mm)</b>	581 x 483 x 187
<b>Physical (mm)</b>	512.4 x 418.0 x 239.6
<b>Physical Without Stand (mm)</b>	512.4 x 304.4 x 56.4
<b>Package Contents</b>	VG2239Smh monitor, Power cable, VGA cable, DisplayPort cable, Audio cable, USB cable, Quick Start Guide, ViewSonic Wizard CD (User Guide)
<b>Recycle/Disposal</b>	Please dispose of in accordance with local, state or federal laws.
<b>Warranty</b>	Three-year limited warranty on parts, labor and backlight

UPC: 766907801811



### Contact Sales

[ViewSonic.com](http://ViewSonic.com)

888.881.8781

email: [salesinfo@viewsonic.com](mailto:salesinfo@viewsonic.com)