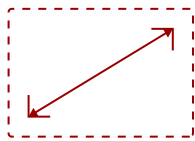
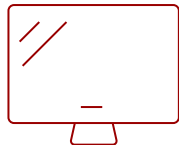


TD2230 - 22" 1080P IPS 10-POINT MULTI TOUCH MONITOR WITH HDMI, DP, AND VGA

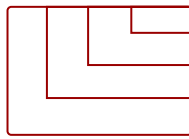
Key Features



22"
DISPLAY



IPS
PANEL



Up to 1920x1080 non-interlaced
RESOLUTION



Product Description

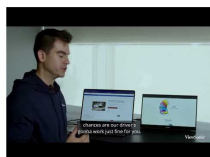
The ViewSonic® TD2230 is a 22" (21.5" viewable) Full HD multi-touch display. With a SuperClear® IPS panel and 10-point projected capacitive touch technology, this display delivers stunning front-of-screen performance with a responsive and accurate touch experience. Featuring a 7H hardness touch screen, edge-to-edge frameless design, and up to 10 simultaneous touch points, this durable display allows users to tap, swipe, pinch, and zoom with ease - perfect for retail, education, or enterprise. An advanced ergonomic bookstand design provides a full range of motion for the desktop, and a VESA-compatible mount allows for flexible mounting options on a monitor stand or wall. Future-proof connectivity options include HDMI, DisplayPort, and USB, while VGA is also available for legacy systems. Cross compatibility with a wide range of operating systems include Windows 10, and certain Android and Linux versions. ViewSonic's exclusive ViewMode™ feature provides intuitive presets for optimized screen performance in different applications. In addition, Flicker-Free technology and a Blue Light Filter help to minimize eye strain from extended viewing periods. Industry-leading warranty protection and legendary ViewSonic product quality makes this high performance multi-touch display a great long-term investment for all touch applications.

Specifications

	More Information
UPC	766907951011
Screen Size	22"
Viewable Area (in.)	21.5
Panel Type	IPS
Display Resolution	1920 x 1080
Static Contrast Ratio	1,000:1
Dynamic Contrast Ratio	50,000,000:1
Light Source	LED
Brightness	250 cd/m2
Colors	16.7M
Response Time (Typical GTG)	14ms
Viewing Angles	178° horizontal, 178° vertical
Backlight Life (Hours)	30,000
Panel Surface	Anti-glare, Hard coating 7H
PC Resolution (max)	Up to 1920x1080 non-interlaced
Mac® Resolution (max)	Up to 1920x1080
USB Type A	2
USB Type B	1
3.5mm Audio In	1
3.5mm Audio Out	1
HDMI In	1
VGA	1
DisplayPort	1
Power in	DC 19V/2.37A
Touch Technology	Capacitive
Touch Points	10-Point Touch
Internal Speakers	3W (x2)
Eco Mode (Conserve)	16W
Eco Mode (optimized)	18W
Consumption (typical)	25W
Consumption (max)	28W
Voltage	AC 100-240V (universal), 50-60Hz
Cable Organization	No

Physical Controls	1, 2, Down, Up, Power
On Screen Display	Auto Image Adjust, Contrast/Brightness, Input Select, Audio Adjust, Color Adjust, Information, Manual Image Adjust, Setup Menu, Memory Recall (See user guide for complete OSD functionality)
Temperature	32-104° F (0 - 40° C)
Humidity (non-condensing)	20-90%
VESA Compatible	100 x 100 mm
Frequency Horizontal	24~82kHz
Frequency Vertical	50~76Hz
Analog Sync	Separate Sync, Composite Sync, Sync on Green, TMD5, PCI-E
Tilt (Forward/Back)	20°~70°, lay flat
Regulations	cULus, FCC-B w/ICES003, Energy Star 7.0, DOE EPEAT, UL-MX-CoC, Mexico Energy
Net (lbs)	7.9
Net Without Stand (lbs)	7.9
Gross (lbs)	10.4
Net (kg)	3.6
Net Without Stand (kg)	3.6
Gross (kg)	4.7
Packaging (in.)	21.7 x 14.6 x 4.5
Physical (in.)	19.3 x 11.8 x 5.1
Physical Without Stand (in.)	19.3 x 11.8 x 1.9
Packaging (mm)	550 x 371 x 114
Physical (mm)	490.3 x 298.8 x 129.7
Physical Without Stand (mm)	490.3 x 298.8 x 47.3
Package Contents	TD2230 monitor, Power cable, Power adapter, HDMI cable, USB 3.0 cable, Audio cable, Quick Start Guide, ViewSonic Wizard CD
Recycle/Disposal	Please dispose of in accordance with local, state or federal laws.
Warranty	*Refurbished. 30-day DOA policy for full refund, with a 90-day repair warranty on parts and labor.

UPC: 766907951011



Contact Sales
ViewSonic.com
 888.881.8781
 email:
salesinfo@viewsonic.com