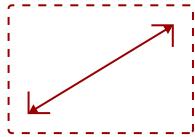


## EP1052T-L - 10.1" SCHEDULING PANEL, MEETING ROOM TOUCH CONTROLLER, POE+, NFC, RFID, WI-FI

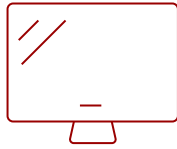
### Key Features

---

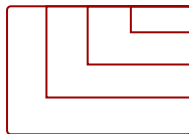
- Simple Scheduling
- Easy and Secure Cabling
- Interactive On-Demand Messaging
- Content Management Software
- Enterprise Secured Solution
- Simple Yet Powerful
- 1-year Limited Warranty



10  
**DISPLAY**



IPS-Type  
**PANEL**



**RESOLUTION**



### Product Description

---

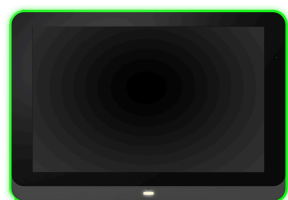
The ViewSonic® EP1052T-L is a 10.1" all-in-one interactive digital ePoster that can be used as a video conferencing touch controller, meeting room scheduler and communication signage display. For video conferencing, the EP1052T-L provides one-touch join, easy content-sharing, and a seamless meeting experience across all rooms. When used with certified room scheduling software such as EMS, PLANON, APPSPACE, PRONESTOR and more, the EP1052T-L simplifies meeting room scheduling. The EP1052T-L is also ideal for interactive signage, information kiosks and other on-demand messaging. Filled with user-friendly features like Signage Manager Express software, Power over Ethernet one-wire installation – and so much more – it makes loading, playing and managing content easy and reliable.

# Specifications

More Information	
UPC	766907020168
Screen Size	10
Viewable Area (in.)	10.1
Display Resolution	1280 x 800
Light Source	LED
Orientation	Landscape / Portrait
Static Contrast Ratio	1,000:1
Brightness	350 cd/m2
Colors	16.7M
Viewing Angles	160º horizontal, 160º vertical
Backlight Life (Hours)	10,000
Response Time (Typical GTG)	16ms
Panel Surface	Anti-glare, Hard coating (3H)
Panel Type	IPS-Type
Operation Rating	16/7
Internal Speakers	2W (x2)
3.5mm Audio Out	1
3.5mm Mic In	1
Ethernet LAN (RJ45)	1
USB 2.0 Type A	1
Micro USB	1
Micro SD Card Slot	1
DC Jack (12V/4A)	1
Media Player Type	Yes
CPU	Octa-core ARM Cortex-A53
Operating System	Android™ 9.0
RAM	2GB
Storage Capacity	16GB
Storage Type	eMMC
Touch Technology	Capacitive
Touch Points	10-Point Touch
Voltage	AC 100-240V (universal), 50-60Hz
Consumption (max)	20W

<b>Consumption (typical)</b>	16W
<b>Stand-by</b>	<2W
<b>Temperature</b>	32-104º F (0 - 40º C)
<b>Humidity (non-condensing)</b>	10-85%
<b>Ethernet LAN</b>	10/100/1000 Mbps
<b>Wifi</b>	802.11ac (2.4GHz/5GHz)
<b>VESA Compatible</b>	75 x 75 mm
<b>Gross (lbs)</b>	3.2
<b>Net (lbs)</b>	2.3
<b>Gross (kg)</b>	1.45
<b>Net (kg)</b>	0.92
<b>Packaging (in.)</b>	18.9 x 11.0 x 13.8
<b>Physical (in.)</b>	10.28 x 7.12 x 1.14
<b>Packaging (mm)</b>	480 x 280 x 350
<b>Physical (mm)</b>	261 x 181 x 29
<b>Regulations</b>	CE / FCC / RoHS
<b>Package Contents</b>	EP1052T-L, Quick Start Guide, Flush Wall Mount Bracket, Glass Mount 3M Tape, Mounting Sheet, Cover Sheet, Screws
<b>Recycle/Disposal</b>	Please dispose of in accordance with local, state or federal laws.
<b>Warranty</b>	One-year limited warranty on parts and labor

UPC: 766907020168



## Contact Sales

[ViewSonic.com](https://www.viewsonic.com)

888.881.8781

email:

[salesinfo@viewsonic.com](mailto:salesinfo@viewsonic.com)