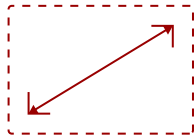


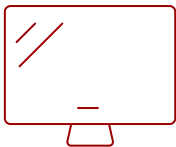
VA2415-H-2

Key Features

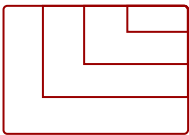
- Frameless Design
- HDMI Cable in Every Box
- Incredible Screen Performance
- Adaptive Sync



24
DISPLAY



MVA
PANEL



1920x1080
RESOLUTION

Product Description

With flexible connectivity, wide-angle viewing, and amazing screen performance, the ViewSonic® VA2415-H-2 delivers solid multimedia features and a sleek design at a great value. Featuring frameless MVA panel technology, the VA2415-H-2 delivers stunning brightness and contrast at nearly any viewing angle. A minimalistic design, edge-to-edge screen, and frameless bezel make this an ideal monitor for nearly seamless multi-screen setups. Whether for working at the office, or enjoying entertainment at home, the VA2415-H-2 features an HDMI port and an included HDMI cable for flexible connectivity to PCs, laptops and gaming consoles. A three-year limited warranty, along with one of the industry's best pixel performance policies, makes the VA2415-H-2 a great overall value choice.

Specifications

More Information	
UPC	766907015324
Screen Size	24
Viewable Area (in.)	23.8


Panel Type	MVA
Display Resolution	1920 x 1080
Display Resolution	Full HD (1920x1080)
Static Contrast Ratio	4,000:1
Dynamic Contrast Ratio	50,000,000:1
Light Source	LED
Brightness	250 cd/m2
Colors	16.7M
Color Space Support	8 bit true
Aspect Ratio	16:9
Response Time (GTG w/OD)	5ms
Viewing Angles	178º horizontal, 178º vertical
Backlight Life (Hours)	30,000
Panel Surface	Anti-glare, Hard coating (3H)
Refresh Rate	75Hz
PC Resolution (max)	1920x1080
Mac® Resolution (max)	1920x1080
3.5mm Audio Out	1
VGA	1
HDMI 1.4 In	1
Eco Mode (Conserve)	13W
Eco Mode (optimized)	16W
Consumption (typical)	20W
Consumption (max)	22W
Voltage	100-240 VAC, 50-60Hz
Power Supply	External
Cable Organization	No
Kensington Lock Slot	1
Temperature	32-104º F (0 - 40º C)
Humidity (non-condensing)	20-90%
VESA Compatible	75 x 75 mm
Frequency Horizontal	24 ~ 86KHz
Frequency Vertical	48 ~ 75Hz
Tilt (Forward/Back)	5º / 20º
Net (lbs)	6.4
Net Without Stand (lbs)	5.5

Gross (lbs)	8.6
Net (kg)	2.9
Net Without Stand (kg)	2.5
Gross (kg)	3.9
Packaging (in.)	26.7 x 16.8 x 4.6
Physical (in.)	21.2 x 16.3 x 7.4
Physical Without Stand (in.)	21.2 x 12.5 x 1.6
Packaging (mm)	677.0 x 427.0. x 117.0
Physical (mm)	538.0 x 415.0 x 188.0
Physical Without Stand (mm)	538.0 x 318.0 x 41.0
Regulations	RoHS, WEEE
Package Contents	VA2415-H x1, HDMI Cable (v1.4; Male-Male) x1, AC/DC Adapter x1, Quick Start Guide x1
Recycle/Disposal	Please dispose of in accordance with local, state or federal laws.
Warranty	Three-year limited warranty on parts, labor and backlight

UPC: 766907015324

Contact Sales

[ViewSonic.com](https://www.viewsonic.com)

888.881.8781 

email: salesinfo@viewsonic.com 