

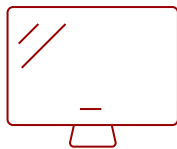
CDE6520-W - 65" DISPLAY, 3840 X 2160 RESOLUTION, 450 CD/M2 BRIGHTNESS

Key Features

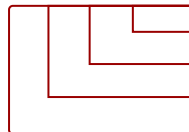
- Ultra HD Resolution
- Powerful All-in-One SoC Platform
- Free ViewBoard® Cast Content Sharing Software
- Integrated Content Management System
- AV Control System Certified



65
DISPLAY



IPS
PANEL



RESOLUTION



Product Description

The ViewSonic® CDE6520-W is a 65" premium 4K large format presentation display. With features including a razor-sharp resolution of 3840 x 2160, 450-nit high brightness, 178-degree ultra-wide viewing angles, 2 x 16W speakers, and wireless screen sharing, the CDE6520-W transforms meeting rooms into a dynamic communications hub. The built-in ViewBoard® screen sharing software*, ViewBoard® Cast (along with the optional ViewSonic® vCastSender app), enables both on-site and online users to participate in conferences and simultaneously share content. Equipped with twin dual-core processors, 3GB RAM, and 16GB of internal memory, the CDE6520-W can play multimedia from internal storage or a USB flash drive. And with remote configuration and content management system support, the ViewSonic® CDE6520-W is also suitable for a wide array of diverse signage applications. *Chrome, Android, Windows, Mac OS, and iOS compliant

Specifications

More Information	
UPC	766907004182
Screen Size	65
Viewable Area (in.)	65
Light Source	DLED
Display Resolution	3840 x 2160
Panel Type	IPS
Static Contrast Ratio	1,200:1
Backlight Life (Hours)	50,000
Brightness	450 cd/m2
Response Time (Typical GTG)	8ms
Viewing Angles	178º horizontal, 178º vertical
Media Player Type	Yes
GPU	Dual-core MaliG51 MP2
CPU	2 Dual-core Processors - Cortex A73 + A53 1.4GHz
Memory	3GB DDR4
Storage	16GB eMMC
Internal Speakers	16W (x2)
HDMI 2.0 In (With CEC, HDCP 2.2)	2
VGA	1
DisplayPort	1
RCA Audio Out	1
SPDIF Audio Out	1
USB 3.0	1
USB 2.0	2
Slot-in PC Slot	1
RS232	1
Ethernet LAN (RJ45)	1
WIFI Module Slot	1
Intel® OPS Slot In (80-pin)	1
Voltage	100-240 VAC +/- 10% Wide Range, 50-60Hz +/-3 Hz
Consumption (max)	300W
Consumption (typical)	220W
Stand-by	<0.5W

Temperature	32-104° F (0 - 40° C)
Humidity (non-condensing)	10-80%
Net Without Stand (lbs)	50.59
Gross (lbs)	70.07
Net Without Stand (kg)	22.95
Gross (kg)	33.60
Packaging (in.)	63.19 x 37.99 x 8.66
Physical (in.)	57.11 x 32.60 x 3.09
Packaging (mm)	1605.0 x 965.0 x 220.0
Physical (mm)	1450.6 x 828.1 x 78.5
VESA Compatible	400 x 200 mm
Screw Size	M6
AV Control	AMX Certified, Crestron Certified (Version 1.0), Extron Certified
Warranty	3-year limited warranty on parts, labor and backlight, onsite warranty
Recycle/Disposal	Please dispose of in accordance with local, state or federal laws.
Package Contents	CDE6520-W, Remote control with batteries, Quick Start Guide, Power cable (1.5m), HDMI Cable (3m), Wall Mount Screws and RS232 Adapter
Regulations	cTUVus, FCC, Energy Star, RoHS, Mexico CoC, Mexico Energy

UPC: 766907004182



Contact Sales

ViewSonic.com

888.881.8781

email:

salesinfo@viewsonic.com