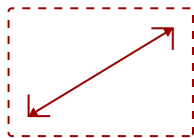


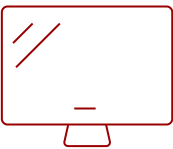
IFP6550-E2 - 65" 4K TOUCH ENABLED VIEWBOARD SMART DISPLAY WITH WIFI  
ADAPTER AND MOBILE TROLLEY CART

Key **Features**

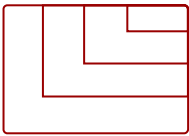
- **ULTRA HD RESOLUTION:** 65 Inch 4K Ultra HD (3840x2160p) interactive display
- **ADVANCED TOUCH:** 40-point multi-touch lets users write on the display with their fingers and stylus pens
- **INTEGRATED SOFTWARE:** The myViewBoard suite includes Whiteboard, ViewBoard Cast, and more for better engagement
- **BETTER SOUND:** Built-in 40W stereo soundbar delivers optimal sound
- **FLEXIBLE CONNECTIVITY:** Powerful quad-core processor and versatile connectivity options with 65W PD USB-C (HDMI, RJ45, and USB ports)
- **EVERYTHING TO GET STARTED:** This bundle includes the interactive display, wireless AC adapter and rolling mobile cart
- **REMOTE MANAGEMENT:** Schedule updates and monitor device status with the built-in myViewBoard® Manager software
- **PEACE OF MIND:** Industry-leading 3-year standard warranty with optional extensions and robust support services



65  
DISPLAY



PANEL



RESOLUTION

Product **Description**

Ideal for education environments, this all-in-one ViewBoard Bundle includes a 65" ViewBoard IFP6550 4K interactive flat panel, a wireless AC adapter, and a VB-STND-001 mobile trolley cart.

Specifications

More Information	
UPC	766907002553
Screen Size	65
Viewable Area (in.)	65
Light Source	LED


<b>Display Resolution</b>	3840 x 2160
<b>Refresh Rate</b>	60Hz
<b>Aspect Ratio</b>	16:9
<b>Static Contrast Ratio</b>	1,200:1
<b>Backlight Life (Hours)</b>	50,000
<b>Brightness</b>	350 cd/m2
<b>Response Time (Typical GTG)</b>	8ms
<b>Viewing Angles</b>	178º horizontal, 178º vertical
<b>Panel Surface</b>	Anti-glare 7H tempered glass
<b>Operation Rating</b>	16/7
<b>Ethernet LAN</b>	(10/100/1000M) (Android 10/100, PC 10/100/1000)
<b>OS</b>	Android 11
<b>GPU</b>	ARM Mali-G51
<b>CPU</b>	ARM Quad Core Cortex A73+A53
<b>CPU Processor Speed</b>	1.1GHz
<b>Memory</b>	4GB
<b>Storage</b>	32GB
<b>Built-in Software</b>	myViewBoard, Chromium browser, Zoom, ViewBoard Cast
<b>Internal Speakers</b>	10W (x2)
<b>Subwoofer</b>	15W (x1)
<b>HDMI 2.0 In</b>	3
<b>HDMI Out</b>	1
<b>VGA</b>	1
<b>DisplayPort</b>	1
<b>Composite RCA</b>	1
<b>3.5mm Audio Out</b>	1
<b>SPDIF Audio Out</b>	1
<b>USB 3.0</b>	4
<b>USB 2.0</b>	2
<b>USB Type C</b>	1
<b>Slot-in PC Slot</b>	1
<b>USB B Touch Port</b>	2
<b>RS232</b>	1
<b>Ethernet LAN (RJ45)</b>	1
<b>WIFI Module Slot</b>	1
<b>Intel® OPS Slot In (80-pin)</b>	1

<b>Voltage</b>	100-240 VAC
<b>Consumption (typical)</b>	95W
<b>Stand-by</b>	<0.5W
<b>On Screen Display</b>	Input, Volume, Backlight, Audio, Screen, Display, Adjust
<b>Remote Control</b>	Volume, Channel, Source, Mute, Back, Input, Menu
<b>Temperature</b>	32-104° F (0 - 40° C)
<b>Humidity (non-condensing)</b>	10-90%
<b>Touch Technology</b>	Infrared
<b>Touch Points</b>	Windows: 40, Android: 20
<b>Tip Detection</b>	Dual tips, 2.5mm and 8mm
<b>Net (lbs)</b>	199.7
<b>Gross (lbs)</b>	248.5
<b>Net (kg)</b>	86.6
<b>Gross (kg)</b>	102.7
<b>Packaging (in.)</b>	66.8 x 42.2 x 12.6
<b>Physical (in.)</b>	59.9 x 36.3 x 29.5
<b>Packaging (mm)</b>	1697.0 x 1071.0 x 320.0
<b>Physical (mm)</b>	1521.0 x 992.0 x 749.0
<b>VESA Compatible</b>	600 x 400 mm
<b>Warranty</b>	3-year limited warranty on parts, labor and backlight, onsite warranty
<b>Recycle/Disposal</b>	Please dispose of in accordance with local, state or federal laws.
<b>Package Contents</b>	IFP6550 Display, wireless AC adapter, VB-STND-001, stylus pen x 2, power cable, remote control with batteries, ViewSonic Wizard CD (User Guide), Quick Start Guide, USB cable, camera bracket, HDMI cable, power cords
<b>Regulations</b>	cTUVus, FCC, ENERGY STAR 7.0, Mexico Energy, CE, CB, RoHS, ErP, WEEE

UPC: 766907002553

## Contact Sales

[ViewSonic.com](http://ViewSonic.com)

888.881.8781 

email: [salesinfo@viewsonic.com](mailto:salesinfo@viewsonic.com) 