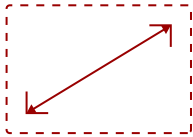


IFP9851 - 98" 4K 16:9 ANDROID EDLA VIEWBOARD INTERACTIVE DISPLAY WITH INTEGRATED MICROPHONE AND USB-C

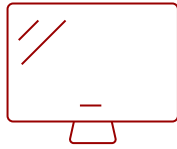
Key Features

Floor stands, wall mounts, and mobile carts sold separately.

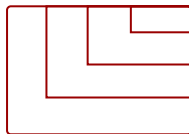
- Robust Security with Android 14 EDLA
- Native Access to Google Education Ecosystem
- Engaging Lessons with ViewSonic® Education Software
- Easy Access with Direct Sign-In
- Responsive Writing Experience
- Instantaneous Collaboration with Write-Away Technology
- Immersive Audio for Maximum Engagement
- Seamless Android Experience with Backward Compatibility



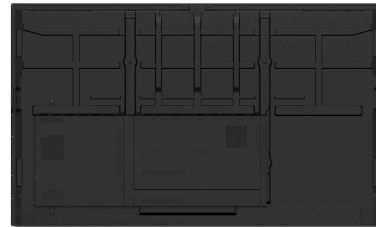
98"
DISPLAY



VA
PANEL



RESOLUTION



Product Description

Transform your classroom into a dynamic learning environment with the ViewSonic® ViewBoard® IFP9851. This 98" interactive flat panel display, featuring Android™ 14 EDLA certification, provides a secure and intuitive platform for seamless teaching. Enhance your lessons with direct access to your Google and Microsoft 365 files and utilize pre-installed ViewSonic® education software to foster engaging collaboration, effectively turning the screen into a powerful digital whiteboard. Start teaching instantly with quick sign-in, and enjoy smooth, natural interaction with the 50-point touchscreen and palm rejection technology. Captivate your students with immersive sound from the 70W speakers and a beamforming mic array. Experience uninterrupted lessons thanks to the powerful octa-core processor for smooth multitasking. Plus, feel good about your technology choices; EPEAT Silver and ENERGY STAR 8.0 certifications demonstrate a commitment to sustainability, making this interactive display a responsible choice for enhancing digital learning in schools.

Specifications

	More Information
UPC	766907032000
OS	ViewBoard OS EDLA
CPU	Rockchip RK3576
Memory	16GB LPDDR
Storage	128GB eMMC
CPU	Rockchip RK3576
Storage	128GB eMMC
Ethernet	10//100/1000
WiFi	802.11 a/b/g/n/ac
Microphone	Beamforming array x 8, noise cancelation
Internal Speakers	25W*2 + 30W = 80W
Subwoofer	20W (x1)
HDMI 2.1 In	4
HDMI Out	1
VGA	1
DisplayPort	1
SPDIF	1
USB Type A	5
USB Type B	2
USB Type C	3 (up to 65W Power Delivery)
RS232	1
Ethernet LAN (RJ45)	2
Intel® OPS Slot In (80-pin)	1
Line In	1
Voltage	100-240 VAC
Consumption (typical)	143.96 W (Energy Star)
Stand-by	<0.5W
Temperature	32-104° F (0 - 40° C)
Humidity (non-condensing)	20-80%
Touch Technology	Infrared
Touch Points	Windows: 50, Android: 20
Tip Detection	Dual tips: 2mm and 8mm Finger: 10-15mm Palm: 30mm
Other	Palm Rejection

Latency	≤5ms
Net (lbs)	184.53
Gross (lbs)	230.49
Net (kg)	83.7
Gross (kg)	83.7
Packaging (in.)	94.72x58.46x11.02
Physical (in.)	87.39x52.1x3.35
Packaging (mm)	2406x1485x280
Physical (mm)	2219.6x1323.3x85.1
VESA Compatible	800 x 600 mm
Microphone	Beamforming array x 8, full duplex echo cancellation
NFC	Yes
Warranty	3-year limited warranty on parts, labor and backlight, onsite warranty
Recycle/Disposal	Please dispose of in accordance with local, state or federal laws.
Package Contents	Display, 3m Power Cord, 1.8m USB-C Cable, Remote control w/ AAA battery, 3m USB Touch Cable, Stylus x2, QSGuide + Compliance statement, RS232 adapter, Clamp x5, Camera Plate, Screw x8 (camera 2+2, wall mount 4), 3m HDMI cable, VB-WIFI-005, NFC Card x3
Regulations	CTUVus, FCC, Energy 8.0, EPEAT, CEC
Ethernet LAN	(10/100/1000M) (USB Type-C 10/100, Android & PC 10/100/1000)
Wifi	VB-WIFI-005 WiFi Adapter
Bluetooth	Bluetooth 5.2
Display Type	Direct View LED
Screen Size	98"
Light Source	DLED
Display Resolution	3840 x 2160
Refresh Rate	60Hz
Panel Type	VA
Aspect Ratio	16:9
Static Contrast Ratio	1,200:1
Dynamic Contrast Ratio	5,000:1
Backlight Life (Hours)	65,000
Brightness	450 nits (without cover glass)
Response Time (Typical GTG)	6.5ms
Viewing Angles	178° horizontal, 178° vertical
Panel Surface	Anti-Glare + Anti-Fingerprint

UPC: 766907032000



Contact Sales
ViewSonic.com

888.881.8781
email:
salesinfo@viewsonic.com