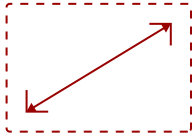
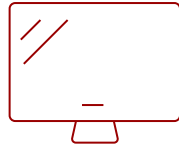


VS2247-MH - 22" 1080P 75HZ MONITOR WITH ADAPTIVE SYNC, HDMI, AND VGA

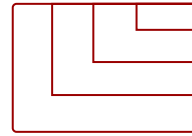
Key Features



22
DISPLAY



MVA
PANEL



1920x1080
RESOLUTION



Product Description

With flexible connectivity, wide-angle viewing, and amazing screen performance, the ViewSonic® VS2247-MH delivers solid multimedia features and a sleek design at a great value. Featuring frameless MVA panel technology, the VS2247-MH delivers stunning brightness and contrast at nearly any viewing angle. A minimalist design, edge-to-edge screen, and frameless bezel make this an ideal monitor for nearly seamless multi-screen setups. Whether for working at the office, or enjoying entertainment at home, the VS2247-MH also features an HDMI port and an included HDMI cable for flexible connectivity to PCs, laptops, gaming consoles. A 3-year limited warranty, along with one of the industry's best pixel performance policies, makes the VS2247-MH a great overall value choice.

Specifications

More Information

UPC	766907020656
Screen Size	22
Viewable Area (in.)	21.5
Panel Type	MVA
Display Resolution	1920 x 1080
Display Resolution	Full HD (1920x1080)
Static Contrast Ratio	3,000:1
Dynamic Contrast Ratio	50,000,000:1
Light Source	LED
Brightness	250 cd/m2
Colors	16.7M
Response Time (Typical GTG)	4ms
Viewing Angles	178° horizontal, 178° vertical

Backlight Life (Hours)	30,000
Panel Surface	Anti-Glare type, Hard-coating (3H), Haze 25%
Refresh Rate	75Hz
PC Resolution (max)	1920x1080
Mac® Resolution (max)	1920x1080
3.5mm Audio In	1
3.5mm Audio Out	1
VGA	1
HDMI 1.4 In	1
Internal Speakers	2W (x2)
Eco Mode (Conserve)	13W
Eco Mode (optimized)	15W
Consumption (typical)	18W
Consumption (max)	28W
Voltage	100-240 VAC
Stand-by	0.5W
Power Supply	External
Cable Organization	No
Kensington Lock Slot	1
Physical Controls	U, R, D, L, EN (power)
On Screen Display	Input Select, Audio Adjust, ViewMode, Color Adjust, Manual Image Adjust, Setup Menu
Temperature	32-104° F (0 - 40° C)
Humidity (non-condensing)	20-90%
VESA Compatible	75 x 75 mm
Frequency Horizontal	24 ~ 86 KHz
Frequency Vertical	48 ~ 75 Hz
Regulations	cTUVus, FCC-B, ICES003, Energy Star 8.0, EPEAT Silver, CEC, MX-CoC, NOM, Mexico Energy, RoHS
Net (lbs)	5.3
Net Without Stand (lbs)	4.4
Gross (lbs)	7.7
Net (kg)	2.4
Net Without Stand (kg)	2
Gross (kg)	3.5
Packaging (in.)	22.4 x 15.1 x 4.6
Physical (in.)	19.4 x 14.8 x 7.4
Physical Without Stand (in.)	19.2 x 11.1 x 1.5

Packaging (mm)	570 x 383 x 118
Physical (mm)	499 x 377 x 188
Physical Without Stand (mm)	494 x 282 x 38
Package Contents	VS2247-MH x1, HDMI Cable (v1.4; Male-Male) x1, AC/DC Adapter x1, Quick Start Guide x1
Recycle/Disposal	Please dispose of in accordance with local, state or federal laws.
Warranty	*Refurbished. 30-day DOA policy for full refund, with a 90-day repair warranty on parts and labor.

UPC: 766907020656



Contact Sales

ViewSonic.com

888.881.8781

email: salesinfo@viewsonic.com