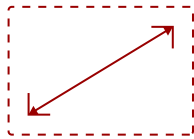
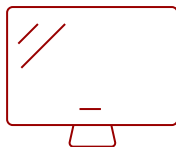


LX60HD - 1080P SMART LED PROJECTOR WITH BUILT-IN GOOGLE TV

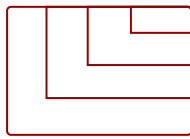
Key Features



50"-140"
DISPLAY



PANEL



VGA(640 x 480) to Full HD(1920 x 1080)
RESOLUTION



Product Description

Upgrade your entertainment experience with the ViewSonic® LX60HD smart LED projector. Featuring built-in Google TV software, this 1080p Full HD projector makes it easy to watch your favorite movies and shows on screens up to 140" without having to purchase an external dongle. And with features like auto H/V keystone correction, four-corner adjustment and obstacle avoidance, the LX60HD helps significantly streamline your setup no matter where you place your projector. A sealed engine design prevents dust and moisture from entering and ensures long-term durability and image clarity for years to come. Enjoy wireless screen mirroring with built-in Wi-Fi and Bluetooth for easy connectivity.

Specifications

More Information

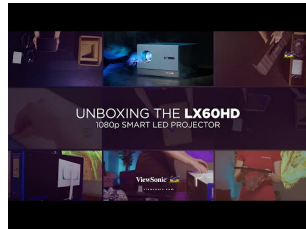
UPC

766907031867

Display Resolution	Full HD (1920x1080)
Display Resolution	1920 x 1080
Brightness (Lumens)	630
Screen Size	50"-140"
Throw Distance	1.42m-3.8m (100"@2.28m)
Throw Ratio	1.2
Keystone	Vertical (+/- 40°) / Horizontal (+/- 40°)
Light Source Life, Normal (hours)	20000
Color Depth	16.7 Million Colors
Dynamic Contrast Ratio	4,200:1
Aspect Ratio	16:9
Frequency Horizontal	15K-135KHz
Frequency Vertical	23-85Hz
PC Resolution (max)	VGA(640 x 480) to Full HD(1920 x 1080)
Mac® Resolution (max)	480i, 480p, 576i, 576p, 720p, 1080i, 1080p
USB 2.0 Type A	1
3.5mm Audio Out	1
HDMI 1.4 (with HDCP 1.4)	1
AV In	1
Wifi	5Gn
Bluetooth	Bluetooth 5.0
Bluetooth Audio-in	1(BT5.0)
Bluetooth Audio-out	1(BT5.0)
Internal Speakers	5W (x2)
Voltage	100-240V+/- 10%, 50/60Hz AC
Stand-by	<0.5W
Physical Controls	Keypad, Power key
On Screen Display	Display, Image, Power Management, Basic, Advanced, System, Information (See user guide for full OSD functionality)
Temperature	32-104° F (0 - 40° C)
Kensington Lock Slot	1
Net (lbs)	6.8
Gross (lbs)	9.5
Net (kg)	3.12
Gross (kg)	4.3
Packaging (in.)	12.4x9.1x12.7

Physical (in.)	9.0x8.9x6.3
Packaging (mm)	315x232x323mm
Physical (mm)	228x227x159mm
Regulations	cTUVus
Package Contents	Projector, power cable, remote control, Quick Start Guide,
Warranty	*Refurbished. 30-day DOA policy for full refund, with a 90-day repair warranty on parts and labor.
Recycle/Disposal	Please dispose of in accordance with local, state or federal laws.

UPC: 766907031867



Contact Sales
[ViewSonic.com](https://www.viewsonic.com)
 888.881.8781
 email:
salesinfo@viewsonic.com