

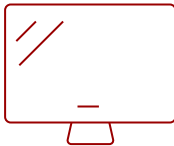
LS711HD - 4200 LUMENS 1080P SHORT THROW LASER INSTALLATION PROJECTOR WITH H/V KEYSTONE, 360-DEGREE PROJECTION

## Key Features

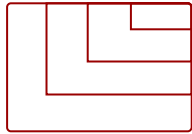
---



35"-300"  
DISPLAY



PANEL



GA(640 x 480) to WUXGA\_RB(1920 x 1200)\*RB-Reduced Blanking  
RESOLUTION



IMAGE SIZE AND PROJECTOR DISTANCE

## Product Description

---

From conference rooms to classrooms to indoor driving ranges, the ViewSonic® LS711HD high-brightness projector is designed to light up presentations, lessons and multimedia with incredible brightness and stunning clarity.

Featuring a .49 short throw ratio, this projector can fill a 100" screen from just 3.6 feet away for the ultimate immersive experience.

Enjoy up to 4,200 ANSI lumens of brightness for up to 30,000 hours without ever having to worry about maintenance or finding a replacement bulb. This LS711HD projector uses eco-friendly laser phosphor technology, making it a light-weight, cost-effective projection solution that's easy to transport. A state-of-the-art DMD chip beautifully enhances contrast so that colors pop off the screen. Plus, these durable projectors are built to be run 24/7 without any degradation in quality or overheating.

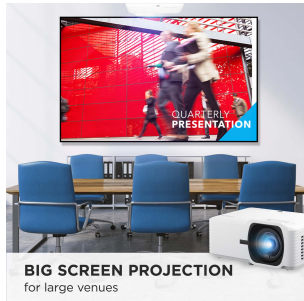
Get set up faster thanks to convenient features like H/V keystone correction, four corner adjustment, 360° projection capabilities and portrait mode.

# Specifications

	More Information
<b>UPC</b>	766907028911
<b>Light Source</b>	Laser
<b>Display Resolution</b>	Full HD (1920x1080)
<b>Display Resolution</b>	1920 x 1080
<b>Brightness (Lumens)</b>	4,200 ANSI
<b>Screen Size</b>	35"-300"
<b>Throw Distance</b>	1.2-10.8ft (100"@3.6ft)
<b>Throw Ratio</b>	0.496
<b>Keystone</b>	Vertical (+/- 15°) / Horizontal (+/- 15°)
<b>Lens</b>	Fixed Zoom
<b>Light Source Life, Normal (hours)</b>	20000
<b>Light Source Life, Dynamic Eco-Mode (hours)</b>	30000
<b>Color Depth</b>	1.07 Billion Colors
<b>Dynamic Contrast Ratio</b>	3,000,000:1
<b>Aspect Ratio</b>	16:9
<b>Frequency Horizontal</b>	15K-102KHz
<b>Frequency Vertical</b>	24-120Hz
<b>PC Resolution (max)</b>	GA(640 x 480) to WUXGA_RB(1920 x 1200)*RB-Reduced Blanking
<b>Mac® Resolution (max)</b>	480i, 480p, 576i, 576p, 720p, 1080i, 1080p
<b>USB 2.0 Type A</b>	1 (5V/1.5A) Power, Service
<b>3.5mm Audio Out</b>	1
<b>Control (RS232)</b>	1
<b>HDMI 1.4 (with HDCP 1.4)</b>	2
<b>Internal Speakers</b>	15W (x1)
<b>Voltage</b>	Input: 100~240V & Output: 19.5VDC / 11.79A
<b>Consumption (typical)</b>	210W
<b>Stand-by</b>	<0.5W
<b>Physical Controls</b>	Keypad, Power key
<b>On Screen Display</b>	Display, Image, Power Management, Basic, Advanced, System, Information (See user guide for full OSD functionality)
<b>Temperature</b>	32-104° F (0 - 40° C)
<b>Kensington Lock Slot</b>	1
<b>Net (lbs)</b>	6.95

<b>Gross (lbs)</b>	10.76
<b>Net (kg)</b>	3.15
<b>Gross (kg)</b>	4.88
<b>Packaging (in.)</b>	15.7x11x6.1in
<b>Physical (in.)</b>	11.3x8.5x5 in
<b>Packaging (mm)</b>	400x280x155mm
<b>Physical (mm)</b>	286x216x129mm
<b>Regulations</b>	cTUVus
<b>Package Contents</b>	Projector, power cable, remote control, Quick Start Guide,
<b>Warranty</b>	*Refurbished. 30-day DOA policy for full refund, with a 90-day repair warranty on parts and labor.
<b>Recycle/Disposal</b>	Please dispose of in accordance with local, state or federal laws.

UPC: 766907028911



**Contact Sales**  
[ViewSonic.com](http://ViewSonic.com)  
 888.881.8781  
 email: [salesinfo@viewsonic.com](mailto:salesinfo@viewsonic.com)