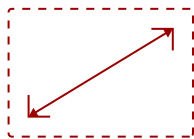


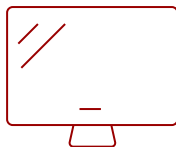
163" ALL-IN-ONE DIRECT VIEW LED DISPLAY | LDM163-182

Key Features

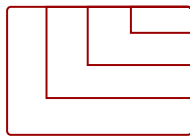
- Seamless and Immersive Screen
- Flexible Installation with Detachable System Control Box
- Durable Glue-on Board Surface Treatment
- Easy Content Sharing
- Centralized Management via LAN Control
- Hassle-Free Installation & Maintenance



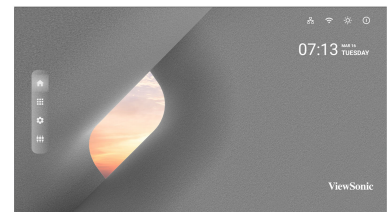
163 in.
DISPLAY



PANEL



VGA(640 x 480) to 4k(3840 * 2160@60hz)
RESOLUTION



Product Description

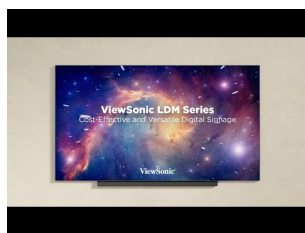
The ViewSonic® LDM163-182 is an innovative All-in-One Direct View LED display. With a huge 163" screen size, the LDM163-182 is built to impress as a centerpiece in any higher education auditorium or lecture hall, as well as in corporate conference rooms, boardrooms and lobbies. This display boasts immersive and stunning visuals thanks to Full HD resolution that pairs perfectly with an impressive 600-nit high brightness. This ensures content and messages are always easy to see, even in brightly lit environments. A sleek design and innovative detachable control box delivers a 99% screen-to-body ratio, allowing the display to seamlessly blend into any space while keeping the controls conveniently accessible. Plus, a Glue-on-Board (GOB) LED surface treatment delivers an IP54 rating for enhanced protection from collisions, dust and moisture. With seamless installation, 24/7 reliability, and purposefully designed features for high-impact messaging and digital signage applications, this display sets a new standard for visual excellence at an unbeatable value.

Specifications

| | More Information |
|---------------------------------------|---|
| UPC | 766907026535 |
| OS | Android 9.0 |
| CPU | RK3399 |
| Memory | DDR 4GB |
| Storage | Total 32GB (26GB available storage) |
| Internal Speakers | 30W x 2 |
| PC Resolution (max) | VGA(640 x 480) to 4k(3840 * 2160@60hz) |
| PC Resolution (min) | 480p, 576p, 720p, 1080p, 2160p |
| HDMI 2.0 (with HDCP 2.2) | 4 |
| HDMI Out | 1 |
| 3.5mm Audio Out | 2 |
| USB 2.0 | 2 |
| USB Type C | 1 |
| RS232 | 1 |
| Ethernet LAN (RJ45) | 3 |
| IR in | 1 |
| Voltage | 100-120V+/- 10%, 50/60Hz, 30A |
| Consumption (max) | 2642W |
| Consumption (typical) | 919W |
| Stand-by | < 0.5W (Sleep), < 0W (Off) |
| On Screen Display | Power, Brightness Level, Volume Level, Input Source |
| Remote Control | x1 |
| Temperature | 32-104° F (0 - 40° C) |
| Net (lbs) | 456.35 |
| Gross (lbs) | 795.87 |
| Net (kg) | 227 |
| Gross (kg) | 361 |
| Packaging (in.) | 88.58 x 48.81 x 39.37 |
| Physical (in.) | 142.2 x 80.2 x 1.2 |
| Physical with Wall Mount (in.) | 142.2 x 80.2 x 2.1 |
| Packaging (mm) | 2250 x 1240 x 1000 |
| Physical (mm) | 3612 x 2037 x 31 |
| Physical with Wall Mount (mm) | 3612 x 2037 x 53 |

| | |
|-------------------------------|--|
| Warranty | 3-year limited warranty |
| Recycle/Disposal | Please dispose of in accordance with local, state or federal laws. |
| Package Contents | Power cord x 1, LAN Cable x 1(CAT 5A), IR Extender x 1, Remote x 1, QSG x 1, Wall mount x 1, LD-MK-003 X1, LD-MK-004 x 1 |
| Regulations | FCC, cTUVus |
| Wifi | 2.4G / 5G n |
| Display Type | Direct View LED |
| Screen Size | 163 in. |
| Viewable Area (in.) | 141"(H) x 79.7(V) |
| Orientation | Landscape |
| LED Pitch Size (mm) | 1.875 |
| LED Grayscale | 13bits |
| Display Resolution | 1920 x 1080 |
| Refresh Rate | 3,840Hz |
| Aspect Ratio | 16:9 |
| Static Contrast Ratio | 6,500:1 |
| Backlight Life (Hours) | 100,000 |
| Brightness | 600 nits (100 levels adjustable) |
| Viewing Angles | 170° horizontal, 170° vertical |
| Operation Rating | 24/7 |

UPC: 766907026535



Contact Sales
ViewSonic.com

888.881.8781
 email:
salesinfo@viewsonic.com