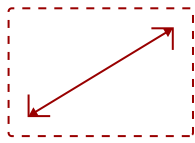


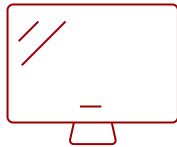
TD3207 - 32" 1080P OPEN FRAME 10-POINT TOUCH MONITOR WITH 24/7 OPERATION AND HDMI, DISPLAYPORT AND RS232

Key Features

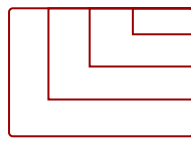
32" 1080p Open Frame 10-Point Touch Monitor with 24/7 Operation and HDMI, DisplayPort and RS232



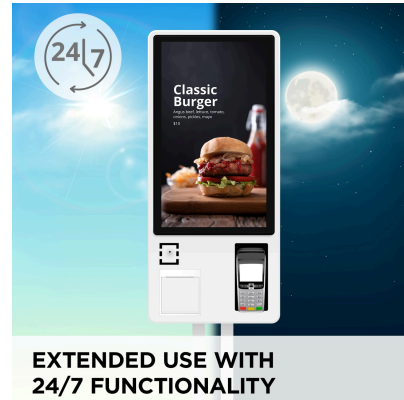
32
DISPLAY



MVA
PANEL



1920 x 1080
RESOLUTION



EXTENDED USE WITH
24/7 FUNCTIONALITY

Product Description

The TD3207 is the ideal solution for commercial and industrial spaces. Designed for heavy, continuous usage, TD3207 delivers a 24/7 long-life. With an open frame design, and equipped with VESA mounting design suitable for portrait and landscape mode, this monitor is ready to be incorporated into industrial, retail, and commercial applications. Resistant to moisture and scratches, the 3mm thick glass screen with 7H hardness features an intuitive 10-point PCAP touch technology for maximum interactivity. Featuring SuperClear® VA panel technology, the device delivers lifelike imagery, vivid color, and constant brightness of up to 450 nits. Connection options include HDMI and DisplayPort inputs for effortless sharing capabilities and an RS232 allows you to control the device remotely.

Specifications

More Information

UPC	766907010466
Screen Size	32
Viewable Area (in.)	31.5
Panel Type	MVA
Display Resolution	1920 x 1080
Display Resolution	Full HD (1920x1080)
Static Contrast Ratio	3,000:1
Dynamic Contrast Ratio	50,000,000:1
Light Source	LED

Brightness	450 cd/m2
Colors	16.7M
Color Space Support	8 bit true
Aspect Ratio	16:9
Response Time (Typical GTG)	5ms
Viewing Angles	178° horizontal, 178° vertical
Backlight Life (Hours)	50,000
Panel Surface	Anti-glare, hard-coating (3H)
Refresh Rate	60Hz
PC Resolution (max)	1920 x 1080
Mac® Resolution (max)	1920 x 1080
USB Type B	1
3.5mm Audio Out	1
HDMI 1.4 In	1
DisplayPort	1
RS232 In	1
Touch Technology	Projective Capacitive
Touch Points	10-Point Touch
Internal Speakers	2-watt (x2)
Eco Mode (Conserve)	30w
Eco Mode (optimized)	38w
Consumption (typical)	46w
Consumption (max)	50w
Voltage	AC 100-240V (universal), 50-60Hz
Stand-by	0.5w
Power Supply	External
Cable Organization	No
Physical Controls	1, 2, Up, Down, Left, Right, Power
On Screen Display	Contrast/Brightness, Input Select, Audio Adjust, Color Adjust, Information, Manual Image Adjust, Setup Menu, Memory Recall
Temperature	32-104° F (0 - 40° C)
Humidity (non-condensing)	20-90%
VESA Compatible	400 x 200; 200 x 100
Frequency Horizontal	15 ~ 73 KHz
Frequency Vertical	47 ~ 75 Hz
Net (lbs)	28.2

Gross (lbs)	34.2
Net (kg)	12.8
Gross (kg)	15.5
Packaging (in.)	34 " (W) x 22.7 " (H) x 6.4 " (D)
Physical (in.)	29.4 " (W) x 17.8 " (H) x 2.5 " (D)
Packaging (mm)	863 mm (W) x 577 mm (H) x 163 mm (D)
Physical (mm)	747 mm (W) x 451 mm (H) x 64 mm (D)
Package Contents	LCD Display, Power Cable, HDMI to HDMI Cable, USB A to USB B cable, Quick Start Guide
Recycle/Disposal	Please dispose of in accordance with local, state or federal laws.
Warranty	Three-year limited warranty on parts, labor and backlight

UPC: 766907010466



10-POINT MULTI-TOUCH
For Smooth and Responsive Touch Capabilities



ADVANCED DURABILITY WITH IP54 RATING

Contact Sales
ViewSonic.com
 888.881.8781
 email: salesinfo@viewsonic.com