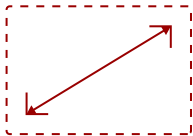


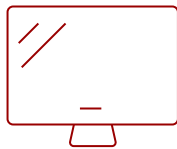
IFP6552-1TAA - 65" VIEWBOARD INTERACTIVE FLAT PANEL DISPLAY WITH INTEGRATED MICROPHONE AND USB-C

Key Features

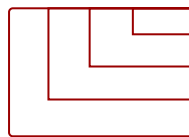
- **ULTRA HD RESOLUTION:** 65 Inch 4K Ultra HD (3840x2160p) interactive display
- **ADVANCED TOUCH:** 33-point multi-touch lets users write on the display with their fingers and stylus pens
- **INTEGRATED SOFTWARE:** The myViewBoard suite includes Whiteboard, ViewBoard Cast, and more for better engagement
- **BETTER SOUND:** Built-in beamforming microphone and 45W stereo soundbar delivers optimal sound
- **FLEXIBLE CONNECTIVITY:** Powerful quad-core processor and versatile connectivity options (HDMI,VGA, RJ45, and USB-C ports)
- **REMOTE MANAGEMENT:** Schedule updates and monitor device status with the built-in myViewBoard® Manager software
- **PEACE OF MIND:** Industry-leading 3-year standard warranty with optional extensions and robust support services
- Upgradable to Android 11



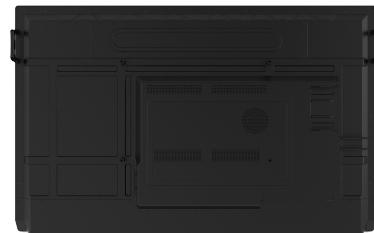
65"
DISPLAY



PANEL



RESOLUTION



Product Description

The ViewSonic® ViewBoard® IFP6552-1TAA is a TAA compliant 65" interactive flat panel display with next-generation whiteboard technologies ideal for collaboration in government environments, mission-critical meeting rooms or interactive huddle spaces. With a high-accuracy touchscreen and intelligent palm recognition technology, the IFP6552-1TAA delivers an intuitive digital whiteboard experience. Featuring 4K Ultra HD resolution, a powerful 45W stereo soundbar and microphone array, this ViewBoard display delivers optimal images and sound for everyone in the meeting room as well those calling in remotely. With the integrated myViewBoard™ software ecosystem, this ViewBoard display enables easy content sharing and interactive presentations.

Specifications

	More Information
UPC	766907015539
OS	ViewBoard OS based on Android 9.0
GPU	ARM Mali-G52
CPU	ARM Quad Core A73
CPU Processor Speed	1.8GHz
Memory	4GB LPDDR4
Storage	32GB eMMC
Microphone	Beamforming array x 8, noise cancelation
Internal Speakers	15W (x2)
Subwoofer	15W (x1)
HDMI 2.0 In	3
HDMI Out	1
VGA	1
DisplayPort	1
SPDIF	1
USB 3.0	4
USB 2.0 Type B	2
USB Type C	60W x 1
OPS PC Slot	1
RS232	1
Ethernet LAN (RJ45)	1
Line In	1
Voltage	100-240 VAC
Consumption (typical)	135.7 W
Stand-by	<0.5W
Physical Controls	Power, Home, Back, Touch, Freeze, VOL-, VOL+
Temperature	32-104° F (0 - 40° C)
Humidity (non-condensing)	10-80%
Touch Technology	Infrared
Touch Points	Windows: 33, Android: 20
Tip Detection	Dual tips, 2.5mm and 8mm
Other	Palm Recognition, Object Awareness
Net (lbs)	96.78

Gross (lbs)	122.14
Net (kg)	43.9
Gross (kg)	55.4
Packaging (in.)	65.35 x 41.14 x 9.65
Physical (in.)	59.41 x 37.61 x 4.69
Packaging (mm)	1660 x 1045 x 245
Physical (mm)	1509.1 x 955.4 x 119.1
VESA Compatible	600 x 400 mm
Screw Size	M8
NFC	No
Warranty	3-year limited warranty on parts, labor and backlight, onsite warranty
Recycle/Disposal	Please dispose of in accordance with local, state or federal laws.
Package Contents	IFP6552-1TAA display, stylus pen x 2, power cable, HDMI cable, USB cable, AV cable, remote control with batteries, Camera plate, M8 screw x 8, Quick Start Guide
Regulations	cTUVus, FCC, ENERGY STAR, EPEAT Silver, Mexico Energy, CE, CB, RoHS, ErP, WEEE
Ethernet LAN	(10/100/1000M) (USB Type-C 10/100, Android & PC 10/100/1000)
Wifi	Optional VB-WIFI-001 adapter, 802.11AX + Bluetooth 5.2
Display Type	LCD
Screen Size	65"
Viewable Area (in.)	64.53
Light Source	LED
Display Resolution	3840 x 2160
Refresh Rate	60Hz
Aspect Ratio	16:9
Static Contrast Ratio	1,200:1
Dynamic Contrast Ratio	5,000:1
Backlight Life (Hours)	30,000
Brightness	400 nits (without cover glass)
Response Time (Typical GTG)	8ms
Viewing Angles	178° horizontal, 178° vertical
Panel Surface	Hardness: 7H (Anti-Fingerprint coating + Anti-Glare coating)

UPC: 766907015539



Contact Sales

ViewSonic.com

888.881.8781

email:

salesinfo@viewsonic.com