

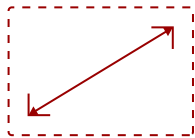


CDE9830-W1 - 98" DISPLAY, 3840 X 2160 RESOLUTION, 500 CD/M2 HIGH BRIGHTNESS, HDMI IN/OUT, USB-C, BUILT-IN CONTENT SHARING, REMOTE MANAGEMENT, AV CONTROL SYSTEM INTEROPERABILITY, TILING MATRIX, LANDSCAPE AND PORTRAIT MODE, WI-FI ADAPTER BUNDLE

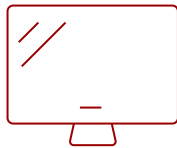
## Key Features

---

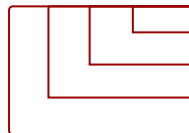
- All-in-one solution includes ViewBoard interactive display, and Wi-Fi adapter
- Powerful ViewSonic Embedded Signage Platform (VESP)
- Integrated RJ45 and USB Wi-Fi
- ViewBoard Cast content sharing software
- myViewBoard Display app for remote screen sharing



98  
**DISPLAY**



ADS  
**PANEL**



**RESOLUTION**



## Product Description

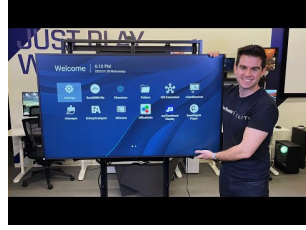
---

Streamline your presentations, enhance collaboration, and succeed with the ViewSonic CDE9830-W1 digital display bundle. Whether your employees are in office or working remotely, they will enjoy fast and easy ways to communicate thanks to ViewBoard Cast™ screen sharing software and the myViewBoard® Display app that allows up to four participants to connect and share content. For maximum visibility even in rooms with high ambient light, these displays offer stunning 4K Ultra HD resolution, high brightness and a 25% high haze anti-glare screen. What's more, these all-in-one displays simplify installation and maintenance thanks to a powerful secured embedded platform that delivers smooth content playback without the need for a PC or media player. Bundle includes CDE9830 and removable Wi-Fi adapter.

# Specifications

	More Information
<b>Display Type</b>	LCD
<b>Screen Size</b>	98
<b>Viewable Area (in.)</b>	98
<b>Orientation</b>	Landscape / Portrait
<b>Colors</b>	1.07B
<b>Color Space Support</b>	8 bit + FRC
<b>Light Source</b>	DLED
<b>Display Resolution</b>	3840 x 2160
<b>Refresh Rate</b>	60Hz
<b>Panel Type</b>	ADS
<b>Aspect Ratio</b>	16:9
<b>Static Contrast Ratio</b>	1,200:1
<b>Dynamic Contrast Ratio</b>	5,000:1
<b>Backlight Life (Hours)</b>	50,000
<b>Brightness</b>	500 cd/m2
<b>Response Time (Typical GTG)</b>	8ms
<b>Bezel Width (in.)</b>	0.98 (uniform)
<b>Bezel Width (mm)</b>	25 (uniform)
<b>Viewing Angles</b>	178° horizontal, 178° vertical
<b>Panel Surface</b>	Anti-Glare type, Hard-coating (3H), Haze 25%
<b>Ethernet LAN</b>	10/100/1000 MB
<b>Wifi</b>	Wi-Fi 6 (802.11ax (a/b/g/n/ac/ax))
<b>Bluetooth</b>	Bluetooth 5.0
<b>OS</b>	Android 11.0
<b>Media Player Type</b>	Media Player
<b>GPU</b>	Dual Core, G52MP2
<b>CPU</b>	Amlogic T982 / 1.9GHz CPU
<b>CPU Processor Speed</b>	Quad-core, 1.5GHz
<b>Memory</b>	4GB DDR4
<b>Storage</b>	32GB
<b>Built-in Software</b>	HTML5, JavaScript and CSS
<b>Internal Speakers</b>	10W (x2)
<b>HDMI 2.1 (HDCP 2.2) In</b>	3

<b>Audio-out (HDMI ARC)</b>	1
<b>HDMI 2.0 Out</b>	1
<b>SPDIF Audio Out</b>	1
<b>USB 3.0</b>	1
<b>USB 2.0</b>	1
<b>USB Type C</b>	1
<b>RS232</b>	1
<b>Ethernet LAN (RJ45)</b>	1
<b>WIFI Module Slot</b>	1
<b>Intel® OPS Slot In (80-pin)</b>	1
<b>Voltage</b>	100-240 VAC +/- 10% Wide Range, 50-60Hz +/-3 Hz
<b>Consumption (max)</b>	507W
<b>Consumption (typical)</b>	318W
<b>Stand-by</b>	<0.5W
<b>Temperature</b>	32-104° F (0 - 40° C)
<b>Humidity (non-condensing)</b>	20-80%
<b>Net (lbs)</b>	95.1
<b>Gross (lbs)</b>	133.9
<b>Net (kg)</b>	43.2
<b>Gross (kg)</b>	60.8
<b>Packaging (in.)</b>	92.91 x 56.1 x 11.02
<b>Physical (in.)</b>	87.12 x 49.94 x 3.11
<b>Packaging (mm)</b>	2360 x 1425 x 280
<b>Physical (mm)</b>	2212.9 x 1268.4 x 79
<b>VESA Compatible</b>	800 x 600 mm
<b>Screw Size</b>	M8
<b>Screw Length (mm)</b>	25
<b>AV Control</b>	AMX Certified, Extron Certified, Crestron Connected
<b>Warranty</b>	Three-year limited warranty on parts, labor and backlight
<b>Recycle/Disposal</b>	Please dispose of in accordance with local, state or federal laws.
<b>Package Contents</b>	CDE9830 Wireless Presentation Display, Remote control with batteries, Quick Start Guide, Power cable, HDMI Cable, USB-C cable, Wall Mount Screws and RS232 cable
<b>Regulations</b>	cTUus, FCC, Energy Star 8.0, RoHS, Mexico NOM, Mexico Energy
<b>Notices</b>	AMX, Crestron Connected, and Extron AV Control Certified



**Contact Sales**  
[ViewSonic.com](http://ViewSonic.com)

888.881.8781  
email:  
[salesinfo@viewsonic.com](mailto:salesinfo@viewsonic.com)