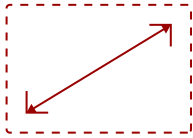
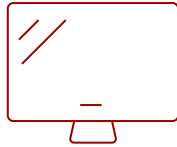


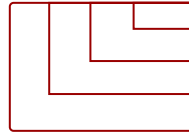
27" CONFIGURABLE ALL-IN-ONE LED DISPLAY | LDC027 120 - P1.2

Key Features

- All-in-one design with configurable screen size and aspect ratio.
- LED cabinets featuring a 16:9 aspect ratio for easy portrait configurations and flexible layouts.
- Enhanced durability with Glue-on-board (GOB) surface treatment.
- Centralized and efficient management via LAN control.
- Detachable system control box for easy access and minimalist aesthetics.
- Ultra-slim design that seamlessly blends into any space.
- Hassle-free installation and maintenance.

27"
DISPLAY

PANEL

VGA(640 x 480) to 4K(3840 x 2160@60hz)
RESOLUTION

Product Description

The ViewSonic® LDC series redefines what's possible in Direct View LED displays. By combining multiple LDC027 LED cabinets, you can create diverse video walls for engaging digital signage. Each cabinet features a native 16:9 aspect ratio and supports both 4K and FHD resolutions. With Glue-on-Board (GOB) surface treatment, the IP54-rated modules are protected against collisions, dust, and moisture, making them suitable for public spaces like lobbies and shopping malls. At just 31mm thick, the display achieves a 99% screen-to-body ratio, offering an impressive viewing experience. Enhanced operational efficiency is facilitated through centralized management via LAN connectivity.

Specifications

More Information

| | |
|------------------------------|--|
| UPC | 766907026344 |
| OS | Android 9.0 |
| CPU | RK3399 |
| Memory | DDR4 4GB |
| Storage | Total 32GB (26GB available storage) (26GB available storage) |
| Internal Speakers | 30W x 2 |
| PC Resolution (max) | VGA(640 x 480) to 4K(3840 x 2160@60hz) |
| Mac® Resolution (max) | 480p, 576p, 720p, 1080p, 2160p |

| | |
|-------------------------------------|--|
| HDMI 2.0 (with HDCP 2.2) | 4 |
| HDMI 1.4 Out (with HDCP 1.4) | 1 |
| Audio-out (HDMI ARC) | 2 |
| USB Type A | 2 |
| USB 3.0 | 1 |
| USB 2.0 | 2 |
| USB Type C | 1 |
| RS232 | 1 |
| Ethernet LAN (RJ45) | 3 |
| RJ45 Input (Internet) | 1 |
| RJ-45 LAN Port Output | 2 |
| IR in | 1 |
| Voltage | 100-120V/30A~ 50/60Hz or 220-240V/15A~ 50Hz(vary by country) |
| Consumption (max) | 72W |
| Consumption (typical) | 24W |
| Stand-by | <0.5W |
| On Screen Display | Yes |
| Remote Control | Yes |
| Temperature | 32-104° F (0 - 40° C) |
| Humidity (non-condensing) | 20-80% |
| Net (lbs) | 11 |
| Net (kg) | 5 |
| Physical (in.) | 23.62x13.29x1.2inches per cabinet |
| Physical (mm) | 600 x 337.5 x 31mm per cabinet |
| Warranty | 3-year limited warranty on parts and labor, on-site service |
| Recycle/Disposal | Please dispose of in accordance with local, state or federal laws. |
| Regulations | cTUVus, FCC, RoHS |
| Wifi | 2.4G/5G Hz |
| Display Type | Direct View LED |
| Screen Size | 27" |
| Viewable Area (in.) | 23.6 (H) x13.3(V) |
| LED Pitch Size (mm) | 1.25 |
| LED Grayscale | 13 bits |
| Display Resolution | 480x270 |
| Refresh Rate | 3,840Hz |
| Aspect Ratio | 16:9 |

| | |
|-------------------------------|----------------------------------|
| Static Contrast Ratio | 6,500:1 |
| Backlight Life (Hours) | 100,000 |
| Brightness | 600 nits (100 levels adjustable) |
| Viewing Angles | 170° horizontal, 170° vertical |

UPC: 766907026344



Contact Sales

ViewSonic.com

888.881.8781

email: salesinfo@viewsonic.com