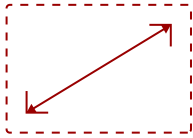
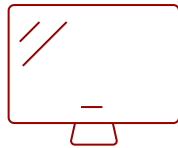


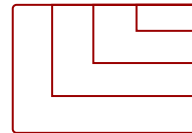
LDM216-251 - 216" ALL-IN-ONE MAINSTREAM FULL HD DIRECT VIEW LED DISPLAY

Key Features

- High-Impact Messaging
- Simple and Easy Setup
- Amazing Audio-Visual Experience
- Device Management Made Easy
- Easy Maintenance

216
DISPLAY

PANEL

1920x1080
RESOLUTION

Product Description

The ViewSonic® LDM216-251 is an innovative All-in-One Direct View LED display. With a huge 216" screen size, the LDM216-251 is built to impress as a centerpiece in any conference room, boardroom, or lobby. Along with its immense screen size, this display delivers stunning visuals with Full HD resolution, 2.5mm fine pixel pitch, 600-nit high brightness, 3,840Hz ultra-fast refresh rate, and 120% Rec.709 wide color gamut. What's more, its ultra-slim 35mm thickness and bezel-free design delivers sleek looks whether its hanging on a wall or mounted on an optional aluminum floor stand. Despite its huge screen size, a front-assembly modular design enables easy delivery, installation, and maintenance. And with remote configuration and content management system support, the ViewSonic LDM216-251 is also suitable for a wide array of diverse signage applications.

Specifications

More Information

UPC	766907014488
OS	Android 8.0
CPU	Hi3751 V811
Memory	4GB DDR4
Storage	32GB (26GB available)
Internal Speakers	5W (x2)
PC Resolution (max)	1920x1080
Mac® Resolution (max)	1920x1080
HDMI 1.4 (with HDCP 1.4)	2

HDMI 1.4 Out (with HDCP 1.4)	1
3.5mm Audio Out	1
USB 3.0	1
USB 2.0	2
USB 2.0 Type B	1
RS232	1
Ethernet LAN (RJ45)	1
IR in	1
Voltage	100-240V+/- 10%, (100-120V/30A, 50/60Hz ; 220-240V/15A)
Consumption (max)	4900W
Consumption (typical)	3430W
Stand-by	<0.5W
Temperature	32-104° F (0 - 40° C)
Humidity (non-condensing)	20-80%
Net (lbs)	750
Gross (lbs)	992
Net (kg)	340
Gross (kg)	450
Packaging (in.)	109.4 x 33.5 x 40.2
Physical (in.)	189.8 x 110.9 x 1.4
Physical with Wall Mount (in.)	189.8 x 110.9 x 2.2
Packaging (mm)	2780.0 x 850.0 x 1020.0
Physical (mm)	4820.95 x 2818.45 x 35.0
Physical with Wall Mount (mm)	4820.95 x 2818.45 x 56.0
Warranty	Three (3) years from the date of first consumer purchase for parts and labor.
Battery Chemistry	Lithium
Display Type	Direct View LED
Screen Size	216
Viewable Area (in.)	216
Orientation	Landscape
Light Source	Fine Pixel Pitch LED
LED Pitch Size (mm)	2.5
LED Grayscale	14 bits
Display Resolution	1920 x 1080
Refresh Rate	3,840Hz
Aspect Ratio	16:9

Static Contrast Ratio

6,000:1

Backlight Life (Hours)

100,000

Brightness

600-nit

Viewing Angles

160° horizontal, 160° vertical

UPC: 766907014488



Contact Sales

ViewSonic.com

888.881.8781

email: salesinfo@viewsonic.com