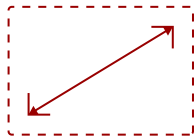


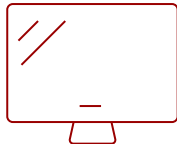
PS502W - 4000 LUMENS WXGA SHORT THROW PROJECTOR WITH DUAL HDMI, USB-A

Key Features

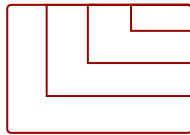
- Bright Images in Any Environment
- Short Throw Lens
- Experience Images up to 300"
- Versatile Connectivity
- Software Updates via USB



60 - 300 in. / 1.5 - 7.6 m
DISPLAY



PANEL



VGA(640 x 480) to FullHD(1920 x 1080)
RESOLUTION



WXGA (1280x800p) RESOLUTION

Product Description

Light up classrooms and conference rooms alike with the ViewSonic® PS502W WXGA short throw projector.

Featuring 4,000 ANSI lumens of stunning brightness, this powerful business and education projector creates crystal clear images up to 300". And with a 0.52 short throw ratio, this projector is capable of displaying shadow-free 100" images from just a few feet away.

The PS502W projector also comes with multiple connectivity options for greater convenience. Dual HDMI ports empower users to connect multiple devices directly to the projector. Once connected, the projector can conveniently switch between different input sources at the press of a button. A USB-A port provides power to wireless HDMI dongles for a more convenient streaming experience. Rather than taking your projector to the service center, software updates can be performed easily over a simple USB cable.

With the PS502W projector, you can let your presentations shine with stunning clarity.

Specifications

	More Information
UPC	766907020038
Light Source	DLP Lamp
Display Resolution	WXGA (1280x800)
Display Resolution	1280 x 800
Brightness (Lumens)	4,000 ANSI
Screen Size	60 - 300 in. / 1.5 - 7.6 m
Throw Distance	0.75m-3.76m (77" @0.96m)
Throw Ratio	0.52
Keystone	Vertical (+/- 19°)
Lens	Fixed Zoom
Light Source Life, Normal (hours)	4000
Light Source Life, Dynamic Eco-Mode (hours)	12000
Color Depth	1.07 Billion Colors
Dynamic Contrast Ratio	15,000:1
Aspect Ratio	16:10
Input Lag	37ms
Frequency Horizontal	15K-102 KHz
Frequency Vertical	23-120 Hz
PC Resolution (max)	VGA(640 x 480) to FullHD(1920 x 1080)
Mac® Resolution (max)	480i, 480p, 576i, 576p, 720p, 1080i, 1080p
USB 2.0 Type A	1
3.5mm Audio Out	1
3.5mm Audio In	1
Control (RS232)	1
HDMI 1.4 (with HDCP 1.4)	2
VGA In	1
VGA Out	1
Internal Speakers	16W (x1)
Voltage	100-240V +/- 10%, 50/60Hz AC
Consumption (typical)	295W
Stand-by	<0.5W
Physical Controls	Keypad, Power key

On Screen Display

Display, Image, Power Management, Basic, Advanced, System, Information (See user guide for full OSD functionality)

Temperature

32-104° F (0 - 40° C)

Kensington Lock Slot

1

Net (lbs)

6.3 lbs

Gross (lbs)

9 lbs

Net (kg)

2.87 kg

Gross (kg)

4.08 kg

Packaging (in.)

15.7 in x 13.3 in x 6.6 in

Physical (in.)

12.2 in x 9.2 in x 4.5 in

Packaging (mm)

400 mm x 337 mm x 168 mm

Physical (mm)

309 mm x 234 mm x 115 mm

Regulations

cTUVus

Package Contents

Projector, power cable, remote control, Quick Start Guide,

Warranty

Three-year limited warranty on parts and labor, 1st year free Express Exchange® service. (One year Express Exchange Service requires product registration).

Recycle/Disposal

Please dispose of in accordance with local, state or federal laws.

UPC: 766907020038



4,000 ANSI LUMENS
and WXGA resolution



GO BIG IN SMALL SPACES
with short throw projection



SOFTWARE UPDATES
via USB

Contact Sales
ViewSonic.com
 888.881.8781
 email:
salesinfo@viewsonic.com