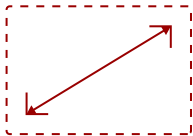


# IFP105S - 105" 5K 21:9 VIEWBOARD INTERACTIVE DISPLAY WITH INTEGRATED MICROPHONE AND USB-C

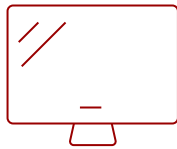
## Key Features

---

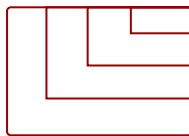
- MICROSOFT TEAMS COMPATIBLE: Support for Microsoft Teams Room™ and Front Row optimizes group efficiency
- INTEGRATED SOFTWARE: myViewBoard software and ViewBoard Cast enhance collaboration with easy content sharing and annotation
- ADVANCED TOUCH: Up to 40-point multi-touch lets users write on the display with their fingers and stylus pens
- STUNNING 5K RESOLUTION: 5120 x 2160 resolution delivers incredibly detail and vibrant images
- BUILT-IN MICROPHONE AND SOUNDBAR: Speak and be heard by in-person and remote audiences
- FLEXIBLE CONNECTIVITY: Powerful octa-core processor and versatile connectivity options (HDMI, DP, RJ45, and USB ports)
- REMOTE MANAGEMENT: Schedule updates and monitor device status with the built-in ViewSonic Manager™ software
- PEACE OF MIND: Industry-leading 3-year standard limited warranty with optional extensions and robust support services



105"  
DISPLAY



PANEL



RESOLUTION



## Product Description

---

The ViewSonic® ViewBoard® IFP105S is a 105" interactive display with next-generation whiteboard technologies ideal for collaboration in corporate environments and higher education. With its ultrawide 21:9 aspect ratio and 5K resolution, this display delivers a huge interactive touchscreen and stunning visuals to boost collaboration and productivity. The high-accuracy touchscreen also features intelligent palm recognition technology for an intuitive digital whiteboard experience. A 47W soundbar with integrated microphone delivers optimal audio for everyone in the meeting room, as well as those calling in remotely. What's more, this ViewBoard interactive display is designed for Microsoft Teams Rooms (MTR) and optimized for Front Row, transforming any room into a collaboration hub for ideation and decision making.

# Specifications

---

	More Information
<b>UPC</b>	766907020533
<b>OS</b>	ViewBoard OS based on Android 13.0
<b>GPU</b>	Mali-G610
<b>CPU</b>	Octa-Core CPU (A76*4 + A55*4)
<b>Memory</b>	8GB LPDDR
<b>Storage</b>	64GB eMMC5.0
<b>Microphone</b>	Beamforming array x 8, noise cancelation
<b>Internal Speakers</b>	16W (x2)
<b>Subwoofer</b>	15W (x1)
<b>HDMI 2.0 In</b>	3
<b>HDMI 2.1 In</b>	1
<b>HDMI Out</b>	1
<b>DisplayPort</b>	1
<b>3.5mm Audio In</b>	2
<b>3.5mm Audio Out</b>	1
<b>SPDIF</b>	1
<b>USB 3.0</b>	6
<b>USB 2.0</b>	1
<b>USB Type C</b>	2
<b>USB B Touch Port</b>	3
<b>RS232</b>	1
<b>Ethernet LAN (RJ45)</b>	2
<b>Intel® OPS Slot In (80-pin)</b>	1
<b>Voltage</b>	100-240 VAC
<b>Consumption (max)</b>	400W
<b>Consumption (typical)</b>	200W
<b>Stand-by</b>	<.5W
<b>Physical Controls</b>	Power, Home, Back, Touch, Freeze, VOL-, VOL+
<b>Temperature</b>	32-104° F (0 - 40° C)
<b>Humidity (non-condensing)</b>	20-80%
<b>Touch Technology</b>	Infrared
<b>Touch Points</b>	Windows: 40, Android: 20
<b>Tip Detection</b>	Dual tips: 2mm and 8mm, Finger: 10-15mm, Palm: 30mm

<b>Latency</b>	≤5ms
<b>Net (lbs)</b>	201.5
<b>Gross (lbs)</b>	263.5
<b>Net (kg)</b>	91.4
<b>Gross (kg)</b>	119.5
<b>Packaging (in.)</b>	105.19 x 11.02 x 51.38
<b>Physical (in.)</b>	98.71 x 44.49 x 4.06
<b>Packaging (mm)</b>	2672 x 280 x 1305
<b>Physical (mm)</b>	98.71 x 44.49 x 4.06
<b>VESA Compatible</b>	1000x400
<b>Screw Size</b>	M8
<b>Warranty</b>	*Final Sale. Sold AS-IS with no warranty on parts or labor. 30-day DOA policy for full refund.
<b>Recycle/Disposal</b>	Please dispose of in accordance with local, state or federal laws.
<b>Package Contents</b>	IFP105S display, 3m power cord by ship area, Remote control with AAA battery, 3m touch USB cable, Touch pen x 2 (a set), Quick Start Guide + Compliance statement, RS232 adapter, Clamp x 5, Camera Plate, Screw x 8 (camera 2+2, wall mount 4), HDMI cable 3m
<b>Regulations</b>	CTUVus, FCC, Energy 8.0, EPEAT, CEC, Mexico, CE, CB, ErP, REACH, UKCA, RCM
<b>Ethernet LAN</b>	(10/100/1000M) (USB Type-C 10/100, Android & PC 10/100/1000)
<b>Wifi</b>	Optional VB-WIFI-004 adapter, 802.11AC + Bluetooth 5.0
<b>Bluetooth</b>	Optional VB-WIFI-001
<b>Display Type</b>	LCD
<b>Screen Size</b>	105"
<b>Viewable Area (in.)</b>	104.6" diagonal
<b>Light Source</b>	DLED
<b>Refresh Rate</b>	60Hz
<b>Aspect Ratio</b>	21:9
<b>Static Contrast Ratio</b>	4,000:1
<b>Dynamic Contrast Ratio</b>	5,000:1
<b>Backlight Life (Hours)</b>	50,000
<b>Brightness</b>	400
<b>Response Time (Typical GTG)</b>	6.5ms
<b>Viewing Angles</b>	178° horizontal, 178° vertical
<b>Panel Surface</b>	Anti-glare 9H tempered glass

UPC: 766907020533



## Contact Sales

[ViewSonic.com](https://www.viewsonic.com)

888.881.8781

email:

[salesinfo@viewsonic.com](mailto:salesinfo@viewsonic.com)