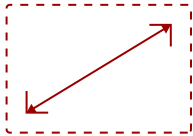


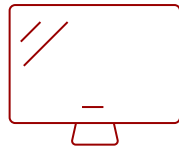
IFP6550 GEN 5 65" 4K VIEWBOARD INTERACTIVE DISPLAY

Key Features

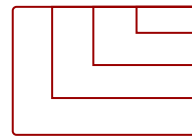
- **ULTRA HD RESOLUTION:** 65 Inch 4K Ultra HD (3840x2160p) interactive display
 - **ADVANCED TOUCH:** 40-point multi-touch lets users write on the display with their fingers and stylus pens
 - **UPGRADED OPERATING SYSTEM:** Android 11 operating system
 - **BETTER SOUND:** Built-in 40W stereo soundbar delivers optimal sound
 - **INTEGRATED SOFTWARE:** The myViewBoard suite includes Whiteboard, ViewBoard Cast, and more for better engagement
 - **FLEXIBLE CONNECTIVITY:** Powerful quad-core processor and versatile connectivity options with 65W PD USB-C (HDMI, RJ45, and USB ports)
 - **REMOTE MANAGEMENT:** Schedule updates and monitor device status with the built-in myViewBoard® Manager software
 - **PEACE OF MIND:** Industry-leading 3-year standard warranty with optional extensions and robust support services
-



65
DISPLAY



PANEL



RESOLUTION



Product Description

Featuring 4K Ultra HD resolution and an advanced, next-generation touchscreen, the ViewSonic® ViewBoard® IFP6550 delivers incredible collaborative capabilities for 21st century boardrooms and classrooms. With integrated myViewBoard® annotation software and ViewBoard Cast™ streaming software, content creation and sharing has never been easier. What's more, this ENERGY STAR certified display delivers optional slot-in PC capability for more computing-intensive interactive applications. A VESA-compatible design allows for installation on a wall mount, or on an optional trolley cart for more flexible installation in classrooms and meeting rooms.

The downloads listed below are specifically for the IFP6550 **Generation 5**.
Looking for downloads for an earlier version? [Please click here.](#)

Not sure which generation your panel is? [Please click here.](#)

Specifications

More Information

UPC	766907912814
OS	Android 13
GPU	ARM Mali-G51
CPU	ARM Quad Core Cortex A73+A53
CPU Processor Speed	1.1GHz

Memory	8GB
Storage	64GB
Internal Speakers	12W (x2)
Subwoofer	16W (x1)
HDMI 2.0 In	3
HDMI Out	1
3.5mm Audio Out	1
SPDIF Audio Out	1
USB 3.0	4
USB 2.0	2
USB Type C	1
Slot-in PC Slot	1
USB B Touch Port	2
RS232	1
Ethernet LAN (RJ45)	2
WIFI Module Slot	1
Intel® OPS Slot In (80-pin)	1
Voltage	100-240 VAC
Consumption (typical)	95W
Stand-by	<0.5W
Physical Controls	OSD / Remote Control / Annotation overlay
On Screen Display	Input, Volume, Backlight, Audio, Screen, Display, Adjust
Temperature	32-104° F (0 - 40° C)
Humidity (non-condensing)	10-90%
Touch Technology	Infrared
Touch Points	40-Point Touch
Tip Detection	Dual tips, 2.5mm and 8mm
Net (lbs)	89.3
Gross (lbs)	109.6
Net (kg)	40.50
Gross (kg)	49.70
Packaging (in.)	65.7 x 39.8 x 8.8
Physical (in.)	58.6 x 35.3 x 3.5
Packaging (mm)	1669 x 1010 x 223
Physical (mm)	1488 x 897 x 90
VESA Compatible	600 x 400 mm

NFC	No
Warranty	3-year limited warranty on parts, labor and backlight, onsite warranty
Recycle/Disposal	Please dispose of in accordance with local, state or federal laws.
Package Contents	"IFP6550-5 panel, 3m power cord, Remote control with AAA battery, 3m touch USB cable, Touch pen x 2 (VB-PEN-009), Quick Start Guide + Compliance statement, RS232 adapter, Clamp x 5, Camera Plate, Screw x 8 (camera 2+2, wall mount 4), HDMI cable 3"
Regulations	cTUVus, FCC, ENERGY STAR 7.0, Mexico Energy, CE, CB, RoHS, ErP, WEEE
Ethernet LAN	(10/100/1000M) (Android 10/100, PC 10/100/1000)
Display Type	LCD
Screen Size	65
Viewable Area (in.)	65
Light Source	LED
Display Resolution	3840 x 2160
Aspect Ratio	16:9
Static Contrast Ratio	1,200:1
Brightness	400 nits (without cover glass)
Response Time (Typical GTG)	8ms
Viewing Angles	178° horizontal, 178° vertical
Panel Surface	Anti-glare 7H tempered glass

UPC: 766907912814



Contact Sales

ViewSonic.com

888.881.8781

email: salesinfo@viewsonic.com