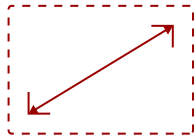




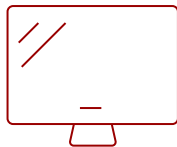
IFP4320-E1 - 43" VIEWBOARD INTERACTIVE FLAT PANEL BUNDLE WITH WIFI DONGLE

Key Features

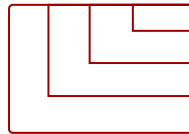
- **ULTRA HD RESOLUTION:** 43 Inch 4K Ultra HD (3840x2160p) interactive display
- **ADVANCED TOUCH:** Multiple users may write or draw on the screen with their fingers
- **INTEGRATED SOFTWARE:** The myViewBoard suite includes Whiteboard, ViewBoard Cast, and more for better engagement
- **FLEXIBLE CONNECTIVITY:** Powerful quad-core processor and versatile connectivity options (HDMI, DisplayPort, DVI-D, RJ45, and USB-C ports)
- **BUILT-IN OS:** Based on Android 8.0 and is compatible with Windows and Android devices only
- **EVERYTHING TO GET STARTED:** This bundle includes the interactive display, wireless AC adapter and active pen
- **REMOTE MANAGEMENT:** Schedule updates and monitor device status with the built-in myViewBoard® Manager software
- **PEACE OF MIND:** Industry-leading 3-year standard warranty with optional extensions and robust support services



43" DISPLAY



PANEL



RESOLUTION



Product Description

Ideal for education environments, this all-in-one ViewBoard bundle includes a 43" ViewBoard IFP4320 4K interactive display, a VSB050 WiFi dongle, and VB-PEN-005 active stylus. Simply connect the VSB050 WiFi dongle to the interactive display for wireless content sharing, and begin writing with the VB-PEN-005 for engaging lessons.

Specifications

More Information

Internal Speakers 10W (x2)

HDMI 2.0 In 1

3.5mm Audio In	1
3.5mm Audio Out	1
SPDIF Audio Out	1
USB 2.0	2
USB Type C	1
USB B Touch Port	1
Ethernet LAN (RJ45)	1
Voltage	100-240 VAC
Consumption (typical)	120W
Stand-by	<0.5W
On Screen Display	Input, Volume, Backlight, Audio, Screen, Display, Adjust
Remote Control	Yes
Temperature	32-104° F (0 - 40° C)
Humidity (non-condensing)	20-80%
Touch Technology	In-cell
Touch Points	Android: 10
Net (lbs)	40.59
Gross (lbs)	49.89
Net (kg)	18.41
Gross (kg)	22.63
Packaging (in.)	47.24 x 30.9 x 8.27
Physical (in.)	38.072 x 22.943 x 8.155
Packaging (mm)	1200 x 785 x 210
Physical (mm)	967 x 582.8 x 207.1
VESA Compatible	400 x 400 mm
Warranty	3-year limited warranty on parts, labor and backlight, onsite warranty
Recycle/Disposal	Please dispose of in accordance with local, state or federal laws.
Package Contents	IFP4320 display, WiFi dongle, Power cable, Type-C cable, HDMI cable, USB cable, Quick Start Guide
Regulations	cTUVus, FCC, ENERGY STAR 7.0, Mexico Energy, CE, CB, RoHS, ErP, WEEE
Display Type	LCD
Screen Size	43"
Viewable Area (in.)	42.51
Light Source	LED
Display Resolution	3840 x 2160
Aspect Ratio	16:9
Static Contrast Ratio	1,000:1

Brightness	350 cd/m2
Response Time (Typical GTG)	9ms
Viewing Angles	178° horizontal, 178° vertical
Panel Surface	Anti-Glare, 4H, Haze 12%



Contact Sales
ViewSonic.com
888.881.8781
email:
salesinfo@viewsonic.com