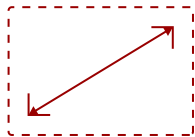
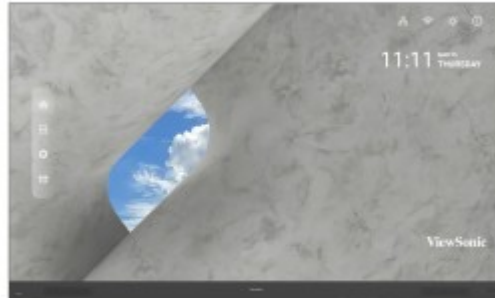
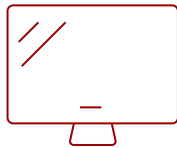


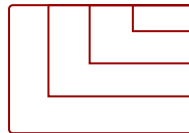
LDP163-181 - 163" DISPLAY, 1920 X 1080 RESOLUTION, 600-NIT BRIGHTNESS

Key Features

- Seamlessly Immersive
- Expandable and Flexible
- Amazing Visuals
- Theater-Level Audio
- Enhanced Durability and Reliability

163"
DISPLAY

PANEL

1920x1080
RESOLUTION

Product Description

The ViewSonic® LDP163-181 All-in-One Direct View LED Display is a premium 163" larger-than-life digital screen that delivers an incredible audio-visual experience for any high-end corporate lobby, boardroom or conference room. Featuring a 120% Rec. 709 wide color gamut, lightning-fast 4,440Hz refresh rate, and a peak brightness of 600 nits, this display delivers true-to-life color and extraordinary detail for every video, presentation and lecture. The display is also equipped with Harman Kardon speakers, 4K/HDR/HLG support and PIP/PBP display modes for immersive content delivery. At 25mm slim and lined with a 5mm frameless edge, the sleek LDP163-181 exudes sophistication and elegance in any modern setting.

Specifications

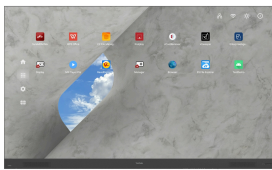
More Information

UPC	766907014969
OS	Android 9.0
Media Player Type	Yes

CPU	MTK9669
Memory	4GB DDR4
Storage	64GB (56GB available)
Internal Speakers	20W (x2)
PC Resolution (max)	1920x1080
Mac® Resolution (max)	1920x1080
HDMI 1.4 In	2
HDMI 2.0 In	3
HDMI 2.1 In	1
HDMI Out	1
HDMI 2.0 Out	1
3.5mm Audio Out	1
USB 2.0	3
RS232	1
Ethernet LAN (RJ45)	1
IR in	1
Voltage	100-240V+/- 10%, (100-120V/30A, 50/60Hz ; 220-240V/15A)
Consumption (max)	2660W
Consumption (typical)	1860W
Stand-by	<0.5W
On Screen Display	Yes
Remote Control	Yes
Temperature	32-104° F (0 - 40° C)
Humidity (non-condensing)	20-80%
Net (lbs)	375
Gross (lbs)	613
Net (kg)	170
Gross (kg)	278
Packaging (in.)	82.7 x 27.95 x 29.8
Physical (in.)	142.5 x 84.5 x 1
Physical with Wall Mount (in.)	142.5 x 84.5 x 2.2
Packaging (mm)	2100 x 710 x 760
Physical (mm)	3610 x 2145.3 x 25
Physical with Wall Mount (mm)	3610 x 2145.3 x 57
Warranty	3-year limited warranty on parts and labor, on-site service
Recycle/Disposal	Please dispose of in accordance with local, state or federal laws.

Package Contents	Power Cord: x1, LAN Cable (Cat 5A): x1(5m), IR Extender Cable: x1(3m), Remote Control: x1, QSG: x1, Wall Mount: x1, Spare Parts: LED PCB Unit x7, Maintenance Tool: LD-MK-001 x1
Regulations	cTUVus, FCC, RoHS
Battery Chemistry	Lithium
Wifi	2.4G / 5G n
Display Type	Direct View LED
Screen Size	163"
Viewable Area (in.)	163
Orientation	Landscape / Portrait
Light Source	Fine Pixel Pitch LED
LED Pitch Size (mm)	1.88
LED Grayscale	14 bits
Display Resolution	1920 x 1080
Refresh Rate	4,440Hz
Aspect Ratio	16:9
Static Contrast Ratio	6,000:1
Backlight Life (Hours)	100,000
Brightness	600-nit
Viewing Angles	160° horizontal, 160° vertical
Operation Rating	24/7

UPC: 766907014969



Contact Sales
ViewSonic.com
 888.881.8781
 email:
salesinfo@viewsonic.com