

LS850WU-S

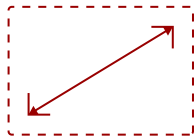
## Key Features

### REFURBISHED

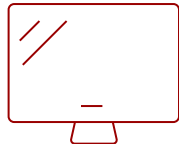
- Bright Images in Large Spaces
- Long-Lasting Laser Phosphor Light Source
- One-Wire HDBT® Input
- 360-Degree Orientation
- Portrait Mode Projection
- Peace of Mind



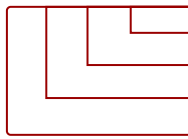
Flexible connectivity for your favorite devices.



30 - 300 in. / 0.76 - 7.62 m  
**DISPLAY**



**PANEL**



1920 x 1200  
**RESOLUTION**



1.6x Optical zoom lens

- x2 HDMI 1.4 (HDCP 1.4)
- x2 VGA (In/Out)
- x1 RCA Audio In
- x1 USB 2.0 Type A
- x1 Mini USB
- X1 Ethernet Lan (RJ45)
- x2 3.5mm Audio In/Out
- x1 RS232 In
- x1 Composite RCA Video In
- x1 Kensington Lock Slot

## Product Description

Bright and versatile for any professional installation, the ViewSonic® LS850WU WUXGA laser projector delivers everything you need for big screens in big venues. Delivering 5,000 lumens of advanced high brightness, 300,000:1 contrast ratio, and up to 20,000 hours\* of light source life, this projector is ideal for auditoriums, lecture halls, large boardrooms, houses of worship, and more. Thanks to SuperColor™ technology, content is brought to life with captivating color, crisp graphics, and stunning videos no matter the environment. This top-notch performer is also easy to deploy and manage with its wide 1.6x optical zoom adjustment, vertical/horizontal keystone, 4 corner adjustment, and a vertical/horizontal lens shift feature that provide extreme flexibility in even the most challenging installations. Thanks to the built-in HDBT receiver, the projector is capable of receiving uncompressed HD video and audio from over 200 feet away via network cable. Moreover, 360-degree tilt angle projection, portrait mode, and 24/7 operation allow for extreme mounting flexibility. The ViewSonic® LS850WU is the ideal WUXGA laser projector for professional installations, large venues, and business and education environments. \*Light source life may vary based on actual usage and other factors.

# Specifications

	More Information
UPC	766907007213
Light Source	DLP Laser
Display Resolution	WUXGA (1920x1200)
Display Resolution	1920 x 1200
Brightness (Lumens)	5,000 ANSI
Screen Size	30 - 300 in. / 0.76 - 7.62 m
Throw Distance	2.9 - 46.2 ft / 0.9 - 14.1 m
Throw Ratio	1.36 - 2.18
Keystone	Vertical (+/- 40°) / Horizontal (+/- 40°)
Lens	1.6x Manual optical zoom / manual optical focus
Light Source (watt)	Nichia 67W X 2
Light Source Life, Normal (hours)	20000
Light Source Life, Dynamic Eco-Mode (hours)	20000
Color Depth	1.07B Color (R/G/B 10bit)
Dynamic Contrast Ratio	3,000,000:1
Aspect Ratio	16:10
Input Lag	37ms
Lens Shift	V (+50%, -50%); H (+23%, -23%)
Frequency Horizontal	15K-102KHz
Frequency Vertical	23-120Hz
PC Resolution (max)	1920 x 1200
PC Resolution (min)	640 x 480
Mac® Resolution (max)	1920 x 1200
Mac® Resolution (min)	640 x 480
USB 2.0 Type A	1
Ethernet LAN (RJ45)	1
3.5mm 12V Trigger	1
3.5mm Audio Out	1
3.5mm Audio In	1
Control (RS232)	1
HDMI 1.4 In	1
HDMI 1.4 (with HDCP 1.4)	1
VGA In	1

<b>VGA Out</b>	1
<b>Composite RCA Video In</b>	1
<b>S-Video In</b>	1
<b>RCA Audio In (L/R)</b>	1
<b>3D VESA</b>	1
<b>Internal Speakers</b>	10W (x2)
<b>Consumption (typical)</b>	430W
<b>Stand-by</b>	<0.5W
<b>On Screen Display</b>	Display, Image, Power Management, Basic, Advanced, System, Information (See user guide for full OSD functionality)
<b>Temperature</b>	32-104° F (0 - 40° C)
<b>Humidity (non-condensing)</b>	0-90%
<b>Kensington Lock Slot</b>	1
<b>Net (lbs)</b>	14.1
<b>Net (kg)</b>	6.4
<b>Physical (in.)</b>	15.9 x 5.7 x 12.0
<b>Physical (mm)</b>	403.9 x 144.8 x 304.8
<b>Regulations</b>	FCC, cTUVus, ROHS
<b>Package Contents</b>	LS850WU projector, power cable, VGA cable, remote control, Quick Start Guide
<b>Warranty</b>	*Refurbished. 30-day DOA policy for full refund, with a 90-day repair warranty on parts and labor.
<b>Recycle/Disposal</b>	Please dispose of in accordance with local, state or federal laws.
<b>Classification</b>	Refurbished

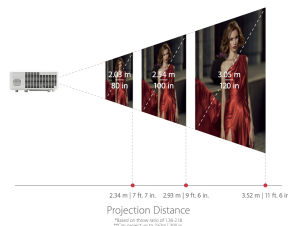
UPC: 766907007213



**BIG SCREEN PROJECTION  
FOR BIG VENUES**



Where to place your projector  
to get the screen size you want.



5000 lumens and  
WUXGA resolution.



**Contact Sales**  
**[ViewSonic.com](http://ViewSonic.com)**

888.881.8781

email:

[salesinfo@viewsonic.com](mailto:salesinfo@viewsonic.com)