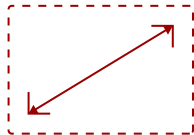


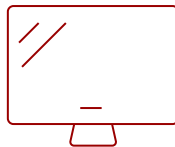
VA2215-H

Key Features

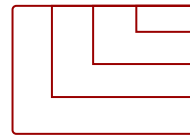
- Frameless Design
- HDMI Cable in Every Box
- Incredible Screen Performance
- Adaptive Sync



22"
DISPLAY



MVA
PANEL



1920x1080
RESOLUTION

Product Description

With flexible connectivity, wide-angle viewing, and amazing screen performance, the ViewSonic® VA2215-h delivers solid multimedia features and a sleek design at a great value. Featuring frameless MVA panel technology, the VA2215-h delivers stunning brightness and contrast at nearly any viewing angle. A minimalist design, edge-to-edge screen, and frameless bezel make this an ideal monitor for nearly seamless multi-screen setups. Whether for working at the office, or enjoying entertainment at home, the VA2215-h features an HDMI port and an included HDMI cable for flexible connectivity to PCs, laptops and gaming consoles. A three-year limited warranty, along with one of the industry's best pixel performance policies, makes the VA2215-h a great overall value choice.

Specifications

More Information

UPC	766907014150
Screen Size	22"
Viewable Area (in.)	21.5


Panel Type	MVA
Display Resolution	1920 x 1080
Display Resolution	Full HD (1920x1080)
Static Contrast Ratio	3,000:1
Dynamic Contrast Ratio	50,000,000:1
Light Source	LED
Brightness	250 cd/m ²
Colors	16.7M
Color Space Support	8 bit true
Aspect Ratio	16:9
Response Time (GTG w/OD)	5ms
Viewing Angles	178° horizontal, 178° vertical
Backlight Life (Hours)	30,000
Panel Surface	Anti-glare, Hard coating (3H)
Refresh Rate	75Hz
PC Resolution (max)	1920x1080
Mac® Resolution (max)	1920x1080
3.5mm Audio Out	1
VGA	1
HDMI 1.4 In	1
Eco Mode (Conserve)	13W
Eco Mode (optimized)	15W
Consumption (typical)	20W
Consumption (max)	21W
Voltage	100-240 VAC, 50-60Hz
Stand-by	0.5W
Power Supply	External
Cable Organization	No
Kensington Lock Slot	1
Physical Controls	U, R, D, L, EN (power)
On Screen Display	Input Select, Audio Adjust, ViewMode, Color Adjust, Manual Image Adjust, Setup Menu
Temperature	32-104° F (0 - 40° C)
Humidity (non-condensing)	20-90%
VESA Compatible	75 x 75 mm
Frequency Horizontal	24 ~ 86KHz
Frequency Vertical	48 ~ 75Hz

Tilt (Forward/Back)	5° / 20°
Regulations	RoHS, WEEE, BSMI, VCCI, PSE
Net (lbs)	5.3
Net Without Stand (lbs)	4.4
Gross (lbs)	7.7
Net (kg)	2.4
Net Without Stand (kg)	2.0
Gross (kg)	3.5
Packaging (in.)	22.4 x 15.1 x 4.6
Physical (in.)	19.4 x 14.8 x 7.4
Physical Without Stand (in.)	19.4 x 11.1 x 1.5
Packaging (mm)	570.0 x 383.0 x 118.0
Physical (mm)	492.0 x 377.0 x 188.0
Physical Without Stand (mm)	492.0 x 282.0 x 38.0
Package Contents	VA2215-H x1, HDMI Cable (v1.4; Male-Male) x1, AC/DC Adapter x1, Quick Start Guide x1
Recycle/Disposal	Please dispose of in accordance with local, state or federal laws.

UPC: 766907014150

Contact Sales

ViewSonic.com

888.881.8781 

email: salesinfo@viewsonic.com 