

CDE4312 - 43" DISPLAY, 3840 X 2160 RESOLUTION, 230 CD/M2 BRIGHTNESS, 16/7

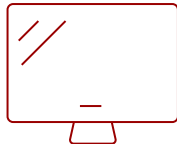
## Key Features

---

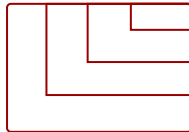
- Ultra HD Resolution
- POWERFUL EMBEDDED SOC PLATFORM
- EMBEDDED LAN AND USB WIRELESS CONNECTIVITY
- VIEWBOARD® CAST CONTENT SHARING SOFTWARE
- Remote Content Sharing from Anywhere
- Remote Monitoring and Display Management Made Simple



43  
DISPLAY



PANEL



RESOLUTION



## Product Description

---

The ViewSonic® CDE4312 is a 43" 4K Ultra HD large format wireless presentation display. With features including a razor-sharp resolution of 3840 x 2160, 230-nit high brightness, 178-degree ultra-wide viewing angles, 2 x 10W speakers, and wireless screen sharing, the CDE4312 transforms meeting rooms into a dynamic communications hub. The built-in ViewBoard® Cast screen sharing software\* (along with the optional ViewSonic vCastSender app), and myViewBoard Display software, enables both on-site and online users to participate in conferences and simultaneously share content. Equipped with a 1.5GHz Quad-core embedded SoC processor, 2GB RAM, and 16GB of internal memory, the CDE4312 can play multimedia from internal storage or a USB flash drive 16 hours a day, seven days a week. And with remote configuration and content management system support, the ViewSonic CDE4312 is also suitable for a wide array of diverse signage applications.

\*Chrome, Android, Windows, Mac OS, and iOS compliant

# Specifications

|                                    | More Information  |
|------------------------------------|---|
| <b>UPC</b>                         | 766907017632  |
| <b>Internal Speakers</b>           | 10W (x2)  |
| <b>Voltage</b>                     | 100-240 VAC +/- 10% Wide Range, 50-60Hz +/-3 Hz               |
| <b>Consumption (max)</b>           | 85W   |
| <b>Consumption (typical)</b>       | 70W   |
| <b>Stand-by</b>                    | <0.5W   |
| <b>On Screen Display</b>           | Picture, Screen, Audio, Time, Advanced Options, About         |
| <b>Temperature</b>                 | 32-104° F (0 - 40° C)   |
| <b>Humidity (non-condensing)</b>   | 20-80%  |
| <b>Operating System</b>            | Android 9.0   |
| <b>CPU</b>                         | Quad-core, 1.5GHz, MT9632/ARM Cortex-A53                      |
| <b>GPU</b>                         | Dual Core, G52MP2   |
| <b>Memory</b>                      | 2GB DDR4  |
| <b>Storage</b>                     | 16GB (eMMC)   |
| <b>Media Player Type</b>           | Yes   |
| <b>Screen Size</b>                 | 43  |
| <b>Viewable Area (in.)</b>         | 42.5  |
| <b>Colors</b>                      | 1.07B   |
| <b>Light Source</b>                | DLED  |
| <b>Display Resolution</b>          | 3840 x 2160   |
| <b>Aspect Ratio</b>                | 16:9  |
| <b>Static Contrast Ratio</b>       | 1,200:1   |
| <b>Viewing Angles</b>              | 178° horizontal, 178° vertical                                |
| <b>Dynamic Contrast Ratio</b>      | 5,000:1   |
| <b>Backlight Life (Hours)</b>      | 30,000  |
| <b>Response Time (Typical GTG)</b> | 8ms   |
| <b>Brightness</b>                  | 230 cd/m2   |
| <b>Panel Surface</b>               | Hard Coat - Anti-Glare, 2% Haze, 3H with anti-glare treatment |
| <b>Operation Rating</b>            | 16/7  |
| <b>Gross (kg)</b>                  | 10.4  |
| <b>Net (kg)</b>                    | 6.6   |
| <b>Net (lbs)</b>                   | 14.55   |
| <b>Gross (lbs)</b>                 | 22.93   |

|                             |   |
|-----------------------------|---|
| <b>RCA Audio In</b>         | 1   |
| <b>SPDIF Audio Out</b>      | 1   |
| <b>USB 2.0</b>              | 1   |
| <b>USB-C (15W PD)</b>       | 1   |
| <b>RS232 In</b>             | 1   |
| <b>HDMI 2.0 In</b>          | 2   |
| <b>Wi-Fi/Bluetooth Slot</b> | 1   |
| <b>Ethernet LAN (RJ45)</b>  | 1   |
| <b>3.5mm Audio Out</b>      | 1   |
| <b>Packaging (mm)</b>       | 1041 x 630 x 148  |
| <b>Bezel Width (mm)</b>     | 15/15/15/20 mm  |
| <b>Physical (mm)</b>        | 972.6 x 566.0 x 82.6  |
| <b>Packaging (in.)</b>      | 40.98 x 24.8 x 5.83   |
| <b>Bezel Width (in.)</b>    | 0.59/0.59/0.59/0.79 in  |
| <b>Physical (in.)</b>       | 38.3 x 22.3 x 3.3   |
| <b>VESA Compatible</b>      | 200 x 200 mm  |
| <b>Regulations</b>          | cTUVus, FCC, Energy Star, EPEAT (Bronze), RoHS  |
| <b>Package Contents</b>     | CDE4312, Remote control with batteries, Quick Start Guide, Power cable, HDMI Cable, Wall Mount Screws and RS232 adapter |
| <b>Recycle/Disposal</b>     | Please dispose of in accordance with local, state or federal laws.  |
| <b>Warranty</b>             | Three-year limited warranty on parts, labor and backlight   |

UPC: 766907017632



### Contact Sales

[ViewSonic.com](http://ViewSonic.com)

888.881.8781

email:

[salesinfo@viewsonic.com](mailto:salesinfo@viewsonic.com)