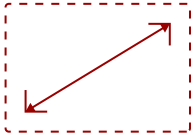
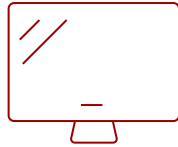


XG320Q-S

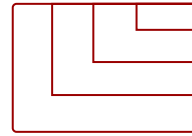
Key Features



32"
DISPLAY



IPS
PANEL



2560 X 1440
RESOLUTION



Product Description

Witness higher levels of gameplay with unmatched color, detail and vibrancy on the ViewSonic ELITE™ XG320Q gaming monitor. Combining quantum dot technology, VESA DisplayHDR™ 600 certification, and Quad HD 2560 x 1440 resolution, this 32" monitor transports gamers to realms of otherworldly graphical detail and jaw-dropping images. Experience ultra-smooth gameplay with a hyper-responsive refresh rate overclockable to 175Hz, along with a 0.5ms (MPRT) / 1ms (GTG) response time that reduces ghosting. No matter how intense the action gets, NVIDIA® G-Sync technology helps to eliminate screen tearing and stuttering so you can dominate in-game with greater precision.

Specifications

More Information

UPC	766907016550
Screen Size	32"
Viewable Area (in.)	31.5
Panel Type	IPS
Display Resolution	2560 x 1440
Display Resolution	WQHD (2560x1440)
Static Contrast Ratio	1,000:1
Dynamic Contrast Ratio	120,000,000:1
Light Source	LED
Brightness	400 cd/m2
Colors	16.7M
Color Space Support	8 bit
Aspect Ratio	16:9
Response Time (Typical GTG)	1ms

Response Time (MPRT)	0.5ms
Viewing Angles	178° horizontal, 178° vertical
Backlight Life (Hours)	30,000
Panel Surface	Anti-Glare type, Hardness 3H, Haze 40%
Refresh Rate	175Hz
Adaptive Sync	NVIDIA G-Sync
PC Resolution (max)	2560 X 1440
Mac® Resolution (max)	2560 X 1440
USB Type B	1
USB 3.0 Type A	3
Micro USB	1
3.5mm Audio In	1
3.5mm Audio Out	1
HDMI 2.0 In	2
DisplayPort	1
Internal Speakers	5W (x2)
Eco Mode (Conserve)	38W
Eco Mode (optimized)	41W
Consumption (typical)	65W
Consumption (max)	96W
Voltage	AC 100-240V (universal), 50-60Hz
Stand-by	0.5W
Power Supply	Internal
Cable Organization	No
Kensington Lock Slot	1
Physical Controls	Joystick key: Up, Right, Down, Left, Center; Quick Access; Power
On Screen Display	Game Modes, Display, Input Select, ViewMode, Audio Adjust, Setup Menu
Temperature	32-104° F (0 - 40° C)
Humidity (non-condensing)	20-90%
VESA Compatible	100 x 100 mm
Frequency Horizontal	HDMI (v2.0): 30 ~ 230 KHz, DisplayPort: 30 ~ 250 KHz
Frequency Vertical	HDMI (v2.0): 48 ~ 144 KHz, DisplayPort: 48 ~ 175 KHz
Height Adjust	120 mm / 4.7 in
Swivel	25°
Tilt (Forward/Back)	5° / 20°
Regulations	cTUVus, FCC-B, ICES003, CEC, NOM, Mexico Energy

Net (lbs)	22.2
Net Without Stand (lbs)	15.6
Gross (lbs)	32.1
Net (kg)	10.1
Net Without Stand (kg)	7.1
Gross (kg)	14.6
Packaging (in.)	33.5 x 20.7 x 12.9
Physical (in.)	28.6 x 19.0~23.7 x 10.4
Physical Without Stand (in.)	28.6 x 17.0 x 3.4
Packaging (mm)	850.0 x 527.0 x 327.0
Physical (mm)	726.0 x 482.0~602.0. x 225.0
Physical Without Stand (mm)	726.0 x 432.0 x 87.0
Package Contents	ELITE XG320Q x1, 3-pin Plug (IEC C13 / CEE22) x1, DisplayPort Cable (v1.4; Male-Male) x1, USB A/B Cable (v3.2; Male-Male) x1, Quick Start Guide x1
Recycle/Disposal	Please dispose of in accordance with local, state or federal laws.
Warranty	*Refurbished. 30-day DOA policy for full refund, with a 90-day repair warranty on parts and labor.
Classification	Refurbished

UPC: 766907016550



Contact Sales

ViewSonic.com

888.881.8781

email: salesinfo@viewsonic.com