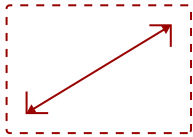


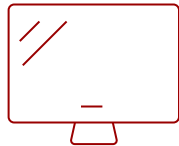
LS920WU - 6000 LUMENS WUXGA LASER PROJECTOR W/ 1.6X OPTICAL ZOOM AND DUAL HDMI

Key Features

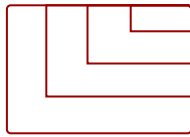
- High brightness 6000 Lumens WUXGA laser projector with advanced visual features
- Long-lasting laser phosphor light source allows the lamp to shine bright for up to 20,000 hours
- 1.6x optical zoom, H/V keystone, 4 corner adjustment, H/V lens shift and 360 degree projection
- Schedule, and manage the projector remotely with Crestron, AMX, Extron, PJ Link, ATEN, and ViewSonic's vController
- Supports most media players, PCs, Macs, and mobile devices with inputs such as dual HDMI, USB, Ethernet LAN



30 - 300 in. / 0.76 - 7.62 m
DISPLAY



PANEL



3840 x 2160
RESOLUTION



Product Description

Bright and versatile for any professional installation, the ViewSonic® LS920WU WUXGA laser projector delivers everything you need for big screens in big venues. Delivering 6,000 ANSI lumens of advanced high brightness, up to 20,000 hours* of light source life, and a screen size of up to 300", this projector is ideal for auditoriums, boardrooms, restaurants, sports bars and more. This top-notch performer is also easy to deploy and manage with its wide 1.6x optical zoom adjustment, 360° projection, and portrait mode that provide extreme flexibility in even the most challenging installations. Dual HDMI 2.0b / HDCP 2.2 ports ensure access to original 4K quality content with HDR/HLG support. In addition, its compact size and built-in HDBaseT deliver the perfect mix of high-quality projection and cost-effectiveness. *Light source life may vary based on actual usage and other factors.

Specifications

	More Information
UPC	766907008715
Light Source	Laser
Display Resolution	WUXGA (1920x1200)
Display Resolution	1920 x 1200
Brightness (Lumens)	6,000 ANSI
Screen Size	30 - 300 in. / 0.76 - 7.62 m
Throw Distance	0.88-14.09m (100"@"2.93m)
Throw Ratio	1.36-2.18
Keystone	Vertical (+/- 40°) / Horizontal (+/- 40°)
Lens	1.6x optical zoom
Light Source (watt)	Nichia 74W x 2
Light Source Life, Normal (hours)	20000
Color Depth	1.07 Billion Colors
Aspect Ratio	16:10
Input Lag	37ms
Lens Shift	Horizontal (50%, -50%) / Vertical (+23%, -23%)
Frequency Horizontal	15K~135KHz
Frequency Vertical	23-120Hz
PC Resolution (max)	3840 x 2160
PC Resolution (min)	640 x 480
Mac® Resolution (max)	3840 x 2160
Mac® Resolution (min)	640 x 480
USB 2.0 Type A	1
Ethernet LAN (RJ45)	1
3.5mm 12V Trigger	1
3.5mm Audio Out	1
3.5mm Audio In	1
Control (RS232)	1
HDMI 2.0 (with HDCP 2.2)	2
VGA In	1
VGA Out	1
Composite RCA Video In	1
RCA Audio In (L/R)	1

RCA Audio Out	1
3D VESA	1
HDBT	1
Internal Speakers	10W (x2)
Voltage	100-240V+/- 10%, 50/60Hz AC
Consumption (typical)	450W
Stand-by	<0.5W
Physical Controls	Keypad, Power key
On Screen Display	Display, Image, Power Management, Basic, Advanced, System, Information (See user guide for full OSD functionality)
Temperature	32-104° F (0 - 40° C)
Kensington Lock Slot	1
Net (lbs)	14.3
Gross (lbs)	19.8
Net (kg)	6.5
Gross (kg)	9.0
Packaging (in.)	20.3 x 19.3 x 0.9
Physical (in.)	15.9 x 12.0 x 5.7
Packaging (mm)	515.0 x 490.0 x 276.0
Physical (mm)	405.0 x 305.0 x 145.0
Regulations	cTUVus
Package Contents	LS920WU projector, power cable, remote control, Quick Start Guide
Warranty	Five-year limited warranty on parts and labor, 1-year limited warranty on the light source, 1st year free Express Exchange® service. (One year Express Exchange Service requires product registration).
Recycle/Disposal	Please dispose of in accordance with local, state or federal laws.

UPC: 766907008715



**6,000 ANSI LUMENS
AND WUXGA RESOLUTION**



**BIG SCREEN PROJECTION
FOR SCHOOLS AND BUSINESSES**



Contact Sales
ViewSonic.com

888.881.8781
email:
salesinfo@viewsonic.com