

CDE7520-E1 - 75" DISPLAY, 3840 X 2160 RESOLUTION, 450 CD/M2 BRIGHTNESS

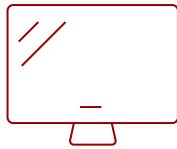
## Key Features

---

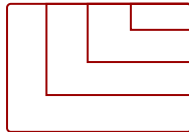
- Ultra HD Resolution
- Powerful Embedded SOC Platform
- All-in-One Solution
- VIEWBOARD® CAST CONTENT SHARING SOFTWARE
- Remote Content Sharing from Anywhere
- myViewBoard Manager



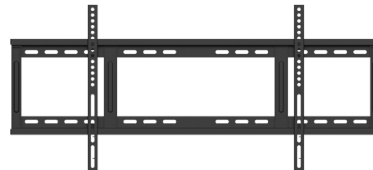
75  
DISPLAY



IPS-Type  
PANEL



RESOLUTION



## Product Description

---

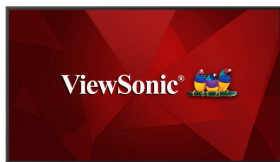
The ViewSonic® CDE7520-W is a 75" premium 4K large format presentation display. With features including a razor-sharp resolution of 3840 x 2160, 450-nit high brightness, 178-degree ultra-wide viewing angles, 2 x 16W speakers, and wireless screen sharing, the CDE7520-W transforms meeting rooms into a dynamic communications hub. The built-in ViewBoard® screen sharing software\*, ViewBoard® Cast (along with the optional ViewSonic® vCastSender app) and myViewBoard Display software, enable both on-site and online users to participate in conferences and simultaneously share content. Equipped with twin dual-core processors, 3GB RAM, and 16GB of internal memory, the CDE7520-W can play multimedia from internal storage or a USB flash drive. And with remote configuration and content management system support, the ViewSonic® CDE7520-W is also suitable for a wide array of diverse signage applications.. Bundle includes CDE7520-W display, USB Wi-Fi adapter and wall mount. \*Chrome, Android, Windows, Mac OS, and iOS compliant

# Specifications


---

	More Information
<b>OS</b>	Android 8.0
<b>Media Player Type</b>	Media Player
<b>GPU</b>	G51MP2
<b>CPU</b>	Dual CPU - Cortex A73 + A5
<b>CPU Processor Speed</b>	Quad-core, 1.4GHz
<b>Memory</b>	3GB DDR4
<b>Storage</b>	16GB
<b>Internal Speakers</b>	16W (x2)
<b>HDMI 2.0 (with HDCP 2.2)</b>	2
<b>DVI-D</b>	1
<b>RCA Audio Out</b>	1
<b>3.5mm Audio In</b>	1
<b>SPDIF Audio Out</b>	1
<b>USB 2.0</b>	2
<b>RS232</b>	1
<b>Ethernet LAN (RJ45)</b>	1
<b>Micro SD Card Slot</b>	1
<b>IR in</b>	1
<b>IR out</b>	1
<b>Intel® OPS Slot In (80-pin)</b>	1
<b>Voltage</b>	100-240 VAC +/- 10% Wide Range, 50-60Hz +/-3 Hz
<b>Consumption (max)</b>	300W
<b>Consumption (typical)</b>	240W
<b>Stand-by</b>	<0.5W
<b>Temperature</b>	32-104° F (0 - 40° C)
<b>Humidity (non-condensing)</b>	20-80%
<b>Net (lbs)</b>	64.6
<b>Gross (lbs)</b>	91.9
<b>Net (kg)</b>	29.3
<b>Gross (kg)</b>	41.7
<b>Packaging (in.)</b>	72.0 x 43.2 x 8.7
<b>Physical (in.)</b>	65.8 x 37.6 x 2.8
<b>Packaging (mm)</b>	1828.0 x 1098.0 x 220.0

<b>Physical (mm)</b>	1672.0 x 955.0 x 70.0
<b>VESA Compatible</b>	400 x 200 mm
<b>Screw Size</b>	M8
<b>AV Control</b>	AMX Certified, Crestron Certified (Version 1.0), Extron Certified
<b>Warranty</b>	Three (3) years from the date of first consumer purchase for parts and labor.
<b>Recycle/Disposal</b>	Please dispose of in accordance with local, state or federal laws.
<b>Package Contents</b>	CDE7520-W, Remote control with batteries, Quick Start Guide, Power cable, HDMI Cable, Wall Mount Screws and RS232 cable
<b>Regulations</b>	cULus, FCC, Energy Star, RoHS
<b>Display Type</b>	LCD
<b>Screen Size</b>	75
<b>Viewable Area (in.)</b>	75
<b>Orientation</b>	Landscape
<b>Colors</b>	1.07B
<b>Color Space Support</b>	8 bit+FRC
<b>Light Source</b>	DLED
<b>Display Resolution</b>	3840 x 2160
<b>Panel Type</b>	IPS-Type
<b>Aspect Ratio</b>	16:9
<b>Static Contrast Ratio</b>	1,200:1
<b>Backlight Life (Hours)</b>	50,000
<b>Brightness</b>	450 cd/m2
<b>Response Time (Typical GTG)</b>	8ms
<b>Viewing Angles</b>	178° horizontal, 178° vertical
<b>Panel Surface</b>	Hard Coat - Anti-Glare, 3% Haze, 2H with anti-glare treatment



**Contact Sales**  
[ViewSonic.com](http://ViewSonic.com)

888.881.8781   
 email:  
[salesinfo@viewsonic.com](mailto:salesinfo@viewsonic.com)