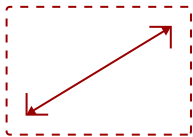


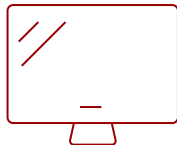
CDE5520-E1 - 55" DISPLAY, 3840 X 2160 RESOLUTION, 350 CD/M2 BRIGHTNESS

Key Features

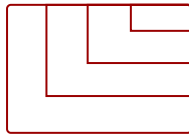
- Ultra HD Resolution
- Powerful Embedded SOC Platform
- All-in-One Solution
- VIEWBOARD® CAST CONTENT SHARING SOFTWARE
- Remote Content Sharing from Anywhere
- myViewBoard Manager



55
DISPLAY



IPS-Type
PANEL



RESOLUTION



Product Description

The ViewSonic® CDE5520 is a 55" (54.6" viewable) premium 4K large format presentation display. With features including a razor-sharp resolution of 3840 x 2160, 350-nit high brightness, 178-degree ultra-wide viewing angles, 2 x 10W speakers, and wireless screen sharing, the CDE5520 transforms meeting rooms into a dynamic communications hub. The built-in ViewBoard® screen sharing software*, ViewBoard® Cast (along with the optional ViewSonic® vCastSender app) and myViewBoard Display software, enables both on-site and online users to participate in conferences and simultaneously share content. Equipped with twin dual-core processors, 3GB RAM, and 16GB of internal memory, the CDE5520 can play multimedia from internal storage or a USB flash drive 24 hours a day, seven days a week. And with remote configuration and content management system support, the ViewSonic® CDE5520 is also suitable for a wide array of diverse signage applications. Bundle includes CDE5520 display, USB Wi-Fi adapter and wall mount. *Chrome, Android, Windows, Mac OS, and iOS compliant

Specifications

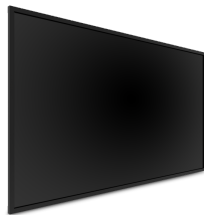
More Information

OS

Android 8.0

Media Player Type	Media Player
GPU	G51MP2
CPU	Dual CPU - Cortex A73 + A5
CPU Processor Speed	Quad-core, 1.4GHz
Memory	3GB DDR4
Storage	16GB
Internal Speakers	10W (x2)
HDMI 2.0 (with HDCP 2.2)	2
DVI-D	1
RCA Audio Out	1
3.5mm Audio In	1
SPDIF Audio Out	1
USB 2.0	2
RS232	1
Ethernet LAN (RJ45)	1
Micro SD Card Slot	1
IR in	1
IR out	1
Intel® OPS Slot In (80-pin)	1
Voltage	100-240 VAC +/- 10% Wide Range, 50-60Hz +/-3 Hz
Consumption (max)	115W
Consumption (typical)	100W
Stand-by	<0.5W
Temperature	32-104° F (0 - 40° C)
Humidity (non-condensing)	20-80%
Net (lbs)	37.1
Gross (lbs)	52.8
Net (kg)	16.8
Gross (kg)	23.9
Packaging (in.)	55.9 x 35.8 x 9.7
Physical (in.)	48.9 x 28.1 x 2.9
Packaging (mm)	1420.0 x 910.0 x 245.0
Physical (mm)	1243.2 x 714.0 x 74.8
VESA Compatible	400 x 400 mm
Screw Size	M6
AV Control	AMX Certified, Crestron Certified, Crestron Certified (Version 1.0)

Warranty	Three (3) years from the date of first consumer purchase for parts and labor.
Recycle/Disposal	Please dispose of in accordance with local, state or federal laws.
Package Contents	CDE5520, Remote control with batteries, Quick Start Guide, Power cable, HDMI Cable and RS232 cable
Regulations	cULus, FCC, Energy Star, RoHS
Display Type	LCD
Screen Size	55
Viewable Area (in.)	54.6
Orientation	Landscape
Colors	1.07B
Color Space Support	8 bit+FRC
Light Source	DLED
Display Resolution	3840 x 2160
Panel Type	IPS-Type
Aspect Ratio	16:9
Static Contrast Ratio	1,200:1
Backlight Life (Hours)	40,000
Brightness	350 cd/m2
Response Time (Typical GTG)	9ms
Bezel Width (in.)	0.55
Bezel Width (mm)	13.9
Viewing Angles	178° horizontal, 178° vertical
Panel Surface	Hard Coat - Anti-Glare, 3% Haze, 2H with anti-glare treatment



Contact Sales

ViewSonic.com

888.881.8781

email:

salesinfo@viewsonic.com