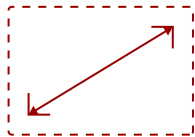


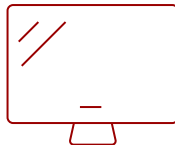
CDE4320-E1 - 43" DISPLAY, 3840 X 2160 RESOLUTION, 350 CD/M2 BRIGHTNESS

Key Features

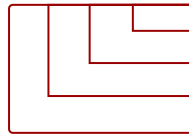
- Ultra HD Resolution
- Powerful Embedded SOC Platform
- All-in-One Solution
- RELIABLE 24/7 CONTINUOUS OPERATION
- Remote Content Sharing from Anywhere
- myViewBoard Manager



43"
DISPLAY



IPS-Type
PANEL



RESOLUTION



Product Description

The ViewSonic® CDE4320 is a 43" (42.51" viewable) premium 4K large format presentation display purpose-built to deliver eye-catching imagery for hotels, restaurants, retail, business, and more. With stunning 3840x2160 resolution, 350-nit high brightness, wide viewing angles, and dual 10W speakers, this display provides immersive, high-impact messaging wherever needed. In addition to HDMI and DVI inputs to connect with various high definition devices, this display utilizes an integrated multi-core processor and 16GB of internal memory, allowing customers to playback multimedia content via USB without the need for a PC. To make life even easier, the bundled vController software offers easy maintenance and intuitive interfaces for remote management via a PC server or laptop, and its flicker-free and blue light filter technologies help provide a comfortable viewing environment. Bundle includes CDE4320 display, USB Wi-Fi adapter and wall mount.

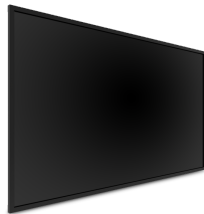
Specifications

More Information

OS	Android 8.0
Media Player Type	Media Player

GPU	G51MP2
CPU	Dual CPU - Cortex A73 + A5
CPU Processor Speed	Quad-core, 1.4GHz
Memory	3GB DDR4
Storage	16GB
Internal Speakers	10W (x2)
HDMI 2.0 (with HDCP 2.2)	2
DVI-D	1
RCA Audio Out	1
3.5mm Audio In	1
SPDIF Audio Out	1
USB 2.0	2
RS232	1
Ethernet LAN (RJ45)	1
Micro SD Card Slot	1
IR in	1
IR out	1
Voltage	100-240 VAC +/- 10% Wide Range, 50-60Hz +/-3 Hz
Consumption (max)	85W
Consumption (typical)	70W
Stand-by	<0.5W
Temperature	32-104° F (0 - 40° C)
Humidity (non-condensing)	20-80%
Net (lbs)	23.2
Gross (lbs)	29.8
Net (kg)	10.5
Gross (kg)	13.5
Packaging (in.)	42.1 x 26.1 x 6.0
Physical (in.)	38.2 x 21.9 x 3.3
Packaging (mm)	1070.0 x 663.0 x 153.0
Physical (mm)	969.9 x 558.3 x 84.6
VESA Compatible	400 x 200 mm
Screw Size	M6
AV Control	AMX Certified, Crestron Certified (Version 1.0), Extron Certified
Warranty	Three (3) years from the date of first consumer purchase for parts and labor.
Recycle/Disposal	Please dispose of in accordance with local, state or federal laws.

Package Contents	CDE4320, Remote control with batteries, Quick Start Guide, Power cable, HDMI Cable and RS232 cable
Regulations	cULus, FCC, Energy Star, RoHS
Display Type	LCD
Screen Size	43"
Viewable Area (in.)	42.5
Orientation	Landscape
Colors	1.07B
Color Space Support	8 bit+FRC
Light Source	DLED
Display Resolution	3840 x 2160
Panel Type	IPS-Type
Aspect Ratio	16:9
Static Contrast Ratio	1,100:1
Backlight Life (Hours)	40,000
Brightness	350 cd/m2
Response Time (Typical GTG)	6ms
Bezel Width (in.)	0.51
Bezel Width (mm)	13.0
Viewing Angles	178° horizontal, 178° vertical
Panel Surface	Hard Coat - Anti-Glare, 3% Haze, 2H with anti-glare treatment



Contact Sales

ViewSonic.com

888.881.8781

email:

salesinfo@viewsonic.com