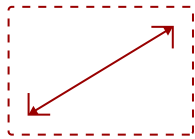


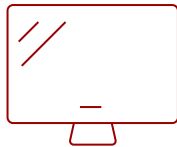
CDE6520-W1 - 65" DISPLAY, 3840 X 2160 RESOLUTION, 450 CD/M2 BRIGHTNESS

Key Features

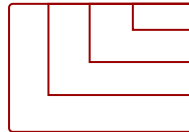
- Ultra HD Resolution
- Powerful Embedded SOC Platform
- All-in-One Solution
- VIEWBOARD® CAST CONTENT SHARING SOFTWARE
- Remote Content Sharing from Anywhere
- myViewBoard Manager



65
DISPLAY



IPS-Type
PANEL



RESOLUTION



Product Description

The ViewSonic® CDE6520-W is a 65" premium 4K large format presentation display. With features including a razor-sharp resolution of 3840 x 2160, 450-nit high brightness, 178-degree ultra-wide viewing angles, 2 x 16W speakers, and wireless screen sharing, the CDE6520-W transforms meeting rooms into a dynamic communications hub. The built-in ViewBoard® screen sharing software*, ViewBoard® Cast (along with the optional ViewSonic® vCastSender app) and myViewBoard Display software, enables both on-site and online users to participate in conferences and simultaneously share content. Equipped with twin dual-core processors, 3GB RAM, and 16GB of internal memory, the CDE6520-W can play multimedia from internal storage or a USB flash drive. And with remote configuration and content management system support, the ViewSonic® CDE6520-W is also suitable for a wide array of diverse signage applications. Bundle includes display and USB Wi-Fi adapter. *Chrome, Android, Windows, Mac OS, and iOS compliant

Specifications

	More Information
Display Type	LCD
Screen Size	65
Viewable Area (in.)	65
Orientation	Landscape
Colors	1.07B
Color Space Support	8 bit+FRC
Light Source	DLED
Display Resolution	3840 x 2160
Panel Type	IPS-Type
Aspect Ratio	16:9
Static Contrast Ratio	1,200:1
Backlight Life (Hours)	50,000
Brightness	450 cd/m2
Response Time (Typical GTG)	9ms
Bezel Width (in.)	0.55
Bezel Width (mm)	13.9
Viewing Angles	178° horizontal, 178° vertical
Panel Surface	Hard Coat - Anti-Glare, 3% Haze, 2H with anti-glare treatment
OS	Android 8.0
Media Player Type	Media Player
GPU	G51MP2
CPU	Dual CPU - Cortex A73 + A5
CPU Processor Speed	Quad-core, 1.4GHz
Memory	3GB DDR4
Storage	16GB eMMC
Internal Speakers	16W (x2)
HDMI 2.0 (with HDCP 2.2)	2
DVI-D	1
VGA	1
DisplayPort	1
RCA Audio Out	1
3.5mm Audio In	1
SPDIF Audio Out	1

SPDIF	1
USB 3.0	2
USB 2.0	2
OPS PC Slot	1
RS232	1
Ethernet LAN (RJ45)	1
IR in	1
IR out	1
WIFI Module Slot	1
Intel® OPS Slot In (80-pin)	1
Voltage	100-240 VAC +/- 10% Wide Range, 50-60Hz +/-3 Hz
Consumption (max)	300W
Consumption (typical)	220W
Stand-by	<0.5W
Temperature	32-104° F (0 - 40° C)
Humidity (non-condensing)	20-80%
Net (lbs)	50.6
Gross (lbs)	70.1
Net (kg)	22.9
Gross (kg)	33.6
Packaging (in.)	63.2 x 38.0 x 8.7
Physical (in.)	57.1 x 32.6 x 3.1
Packaging (mm)	1605.0 x 965.0 x 220.0
Physical (mm)	1450.6 x 828.1 x 78.5
VESA Compatible	400 x 200 mm
Screw Size	M6
AV Control	AMX Certified, Crestron Certified (Version 1.0), Extron Certified
Recycle/Disposal	Please dispose of in accordance with local, state or federal laws.
Package Contents	CDE6520, Remote control with batteries, Quick Start Guide, Power cable, HDMI Cable and RS232 cable
Regulations	cULus, FCC, Energy Star, RoHS



Contact Sales

ViewSonic.com

888.881.8781

email:

salesinfo@viewsonic.com