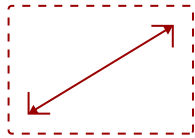


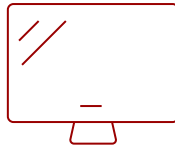
IFP8652-E1

Key Features

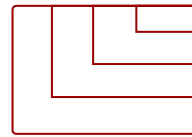
- All-In-One Solution
- Viewboard Interactive Flat Panel
- Faster WI-FI
- Fixed Wall Mount



86
DISPLAY



PANEL



RESOLUTION

Product Description

Ideal for education environments, this all-in-one ViewBoard Bundle includes a 86" ViewBoard IFP8652 4K interactive flat panel, a wireless AC adapter, and a WMK-047-2 wall mount.

Specifications

More Information


Display Type	LCD
Screen Size	86
Viewable Area (in.)	85.6
Light Source	LED
Resolution	3840 x 2160
Refresh Rate (Hz)	60

Aspect Ratio	16:9
Static Contrast Ratio	1,200:1
Dynamic Contrast Ratio	4,000:1
Backlight Life (Hours)	50,000
Brightness	350 cd/m2
Response Time (Typical GTG)	8ms
Viewing Angles	178° horizontal, 178° vertical
Panel Surface	9H
Ethernet LAN	10/100/1000 MB
Wifi	Optional LB-WIFI-001 adapter, 802.11AC + Bluetooth 4.0
OS	ViewBoard OS based on Android 9.0
GPU	ARM Mali-G52
CPU	ARM Quad Core A73
CPU Processor Speed	1.8GHz
Memory	4GB LPDDR4
Storage	32GB eMMC
Microphone	Beamforming array x 8, noise cancelation
Internal Speakers	15W (x2)
Subwoofer	15W (x1)
HDMI 2.0 In	3
HDMI 2.0 Out	2
VGA	1
DisplayPort	1
SPDIF	1
USB 3.0	4
USB 2.0 Type B	2
USB 3.1 Type C	1
OPS PC Slot	1
RS232	1
Intel® OPS Slot In (80-pin)	1
Temperature	32-104° F (0 - 40° C)
Humidity (non-condensing)	10-80%
Touch Technology	Infrared
Touch Points	Windows: 33-Point Touch, Android: 20-Point Touch
Tip Detection	Dual tips, 2mm and 8mm
Other	Palm recognition, objection awareness

Latency	4ms
Net (lbs)	170.7
Gross (lbs)	212.0
Net (kg)	77.3
Gross (kg)	96.1
Packaging (in.)	84.3 x 52.8 x 11.0
Physical (in.)	77.4 x 47.4 x 4.7
Packaging (mm)	2140.0 x 1340.0 x 280.0
Physical (mm)	1966.4 x 1204.4 x 118.4
VESA Compatible	800 x 600 mm
Screw Size	M8
Warranty	3-year limited warranty on parts, labor and backlight, onsite warranty
Recycle/Disposal	Please dispose of in accordance with local, state or federal laws.
PACKAGE CONTENTS	IFP8652 display, WiFi Card, stylus pen x 2, power cable, HDMI cable, USB cable, AV cable, remote control with batteries, Camera plate, M8 screw x 8, Quick Start Guide
Regulations	cTUVus, FCC, ENERGY STAR, EPEAT Silver, Mexico Energy, CE, CB, RoHS, ErP, WEEE

Contact Sales

[ViewSonic.com](https://www.viewsonic.com)

888.881.8781 

email: salesinfo@viewsonic.com 