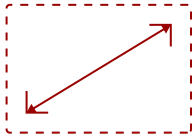


PG707W-S

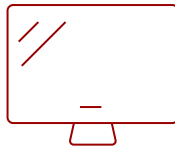
Key Features

REFURBISHED

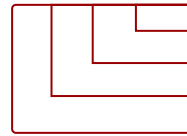
- SuperColor: Amazing Color Accuracy
 - 4000 Lumen Brightness
 - Energy Efficient SuperEco
 - Network Capable
 - Convenient Mounting Flexibility
-



30 - 300 in. / 0.76 - 7.62 m
DISPLAY



PANEL



1920 x 1080
RESOLUTION



Product Description

The ViewSonic® PG707W projector features 4,000 lumens, WXGA 1280 x 800 native resolution, an intuitive, user-friendly design, and a sleek white chassis. Exclusive SuperColor™ technology offers a wide color gamut for beautiful image production in nearly any environment. An energy-saving SuperEco™ feature reduces power consumption and extends the lamp life by up to 20,000 hours. A 10W speaker delivers incredibly clear and audible sound, while a top lamp door enables easy access for lamp maintenance. The PG707W is the ideal high brightness projector for use in both classroom and corporate settings.

Specifications

More Information

UPC	766907007664
Light Source	DLP Lamp
Display Resolution	WXGA (1280x800)
Display Resolution	1280 x 800
Brightness (Lumens)	4,000 ANSI
Screen Size	30 - 300 in. / 0.76 - 7.62 m
Throw Distance	2.6 - 33.1 ft / .8 - 10.1 m
Throw Ratio	1.21-1.57
Keystone	Vertical (+/- 40°) / Horizontal (+/- 40°)

Lens	1.3x optical zoom
Light Source (watt)	203
Light Source Life, Normal (hours)	6000
Light Source Life, Dynamic Eco-Mode (hours)	20000
Color Depth	1.07 Billion Colors
Dynamic Contrast Ratio	22,000:1
Aspect Ratio	16:10
Input Lag	37ms
Frequency Horizontal	15K~105KHz
PC Resolution (max)	1920 x 1080
PC Resolution (min)	640 x 480
Mac® Resolution (max)	1920 x 1080
Mac® Resolution (min)	640 x 480
USB 2.0 Type A	1
Ethernet LAN (RJ45)	1
3.5mm Audio Out	1
3.5mm Audio In	1
Control (RS232)	1
HDMI 1.4 (with HDCP 1.4)	2
VGA In	1
VGA Out	1
Composite RCA Video In	1
Internal Speakers	10W (x1)
Voltage	100-240V+/- 10%, 50/60Hz AC
Consumption (typical)	280W
Stand-by	<0.5W
Physical Controls	Keypad, Power key
On Screen Display	Display, Image, Power Management, Basic, Advanced, System, Information (See user guide for full OSD functionality)
Temperature	32-104° F (0 - 40° C)
Kensington Lock Slot	1
Net (lbs)	5.1
Gross (lbs)	7.8
Net (kg)	2.3
Gross (kg)	3.5
Packaging (in.)	16.3 x 6.6 x 11.7

Physical (in.)	11.6 x 4.3 x 8.6
Packaging (mm)	415.0 x 168.0 x 297.0
Physical (mm)	294.0 x 110.0 x 218.0
Regulations	cTUVus
Package Contents	PG707W projector, power cable, VGA cable, remote control, Quick Start Guide
Warranty	*Refurbished. 30-day DOA policy for full refund, with a 90-day repair warranty on parts and labor.
Recycle/Disposal	Please dispose of in accordance with local, state or federal laws.
Classification	Refurbished

UPC: 766907007664



Contact Sales

ViewSonic.com

888.881.8781

email: salesinfo@viewsonic.com