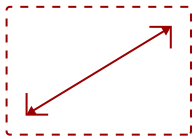


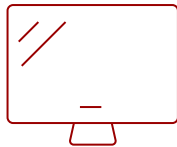
VG3456 - 34" 1440P ERGONOMOMIC 21:9 DOCKING MONITOR WITH USB C AND RJ45

Key Features

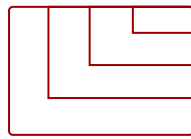
- 34 Inch ultrawide 21:9 WQHD (3440x1440p) IPS monitor with 60Hz refresh rate
- Ethernet RJ45 and USB-C connectivity for fast data, audio and video transfer, 90W charging over one cable
- Advanced ergonomics (40-degree tilt, swivel, rotate and height) for all-day comfort
- Flicker-Free technology and Blue Light Filter for reduced eye fatigue
- Easy-to-install quick release stand with carrying handle and client mount
- The VG3456 supports PC, Mac and more with USB-C, RJ45, HDMI, DisplayPort, USB inputs



34
DISPLAY



MVA
PANEL



3440 x 1440
RESOLUTION



Product Description

Featuring an ultra-wide 34" screen with a design to boost productivity and maximize output, the ViewSonic® VG3456 is a docking monitor that transforms your desktop into a streamlined and efficient workspace. With WQHD 3440 x 1440 resolution, the VG3456 delivers 2.4 times more pixels than standard Full HD monitors, giving users more detail for enhanced productivity. A 21:9 aspect ratio and slim bezels provide extra screen real estate so users can display more content, switch between applications more quickly, view documents side by side, and view multiple windows at once. Enjoy reliable and flexible network connectivity with the integrated gigabit Ethernet port while the latest USB Type-C connectivity provides up to 90W power delivery to your laptop. That's not all, the integrated USB hub also provides single-cable simplicity for connecting and charging your peripherals and accessories. In addition, the included vDisplayManager software gives you quick and easy OSD control, as well as customized screen templates for easy multi-tasking. This monitor is also shipped in eco-friendly biodegradable packaging, along with an easy-to-install quick release stand that makes for quick deployment and a lower total cost of ownership.

Specifications

| | More Information |
|------------------------------------|--------------------------------|
| UPC | 766907011548 |
| Screen Size | 34 |
| Viewable Area (in.) | 34 |
| Panel Type | MVA |
| Display Resolution | 3440 x 1440 |
| Display Resolution | WQHD (3440x1440) |
| Static Contrast Ratio | 3,000:1 |
| Dynamic Contrast Ratio | 50,000,000:1 |
| Brightness | 300 cd/m2 |
| Colors | 1.07B |
| Color Space Support | 10 bits |
| Aspect Ratio | 21:9 |
| Response Time (Typical GTG) | 25ms |
| Response Time (GTG w/OD) | 5ms |
| Viewing Angles | 178° horizontal, 178° vertical |
| Backlight Life (Hours) | 40,000 |
| Panel Surface | Anti-glare, Hard coating (3H) |
| PC Resolution (max) | 3440 x 1440 |
| Mac® Resolution (max) | 3440 x 1440 |
| USB 2.0 Type A | 2 |
| USB 2.0 Type B | 1 |
| USB 3.1 Type C | 1 |
| USB Type C | 90W x 1 |
| Ethernet LAN (RJ45) | 1 |
| HDMI 1.4 In | 2 |
| DisplayPort | 1 |
| Internal Speakers | 3W (x2) |
| Eco Mode (Conserve) | 36W |
| Eco Mode (optimized) | 38W |
| Consumption (typical) | 41W |
| Consumption (max) | 160W |
| Voltage | 100-240 VAC, 50-60Hz |
| Stand-by | 0.3W |

| | |
|-------------------------------------|--|
| Power Supply | Internal |
| Cable Organization | No |
| Kensington Lock Slot | 1 |
| Physical Controls | Key 1 (eye), Key 2, Key 3, Key 4, Key 5, Key 6 (power) |
| On Screen Display | Input Select, Audio Adjust, ViewMode, Color Adjust, Manual Image Adjust, Setup Menu |
| Temperature | 32-104° F (0 - 40° C) |
| Humidity (non-condensing) | 20-90% |
| VESA Compatible | 100 x 100 mm |
| Frequency Horizontal | 15 ~ 150 KHz |
| Frequency Vertical | 24 ~ 100 Hz |
| Height Adjust | 130 mm / 5.1 in |
| Swivel | 60° |
| Tilt (Forward/Back) | 5° / 20° |
| Net (lbs) | 19.4 |
| Net Without Stand (lbs) | 13.5 |
| Gross (lbs) | 29.5 |
| Net (kg) | 8.8 |
| Net Without Stand (kg) | 6.1 |
| Gross (kg) | 13.4 |
| Packaging (in.) | 37.2 x 9.2 x 20.7 |
| Physical (in.) | 32.5 x 16.1~21.2 x 9.3 |
| Physical Without Stand (in.) | 32.5 x 14.4 x 2.0 |
| Packaging (mm) | 945.0 x 234.0 x 525.0 |
| Physical (mm) | 825.0 x 407.8~537.8 x 236.0 |
| Physical Without Stand (mm) | 825.0 x 366.0 x 51.0 |
| Regulations | cTUVus, FCC-B, ICES003, Energy Star Certified, EPEAT Certified, CEC, MX-CoC, Mexico Energy |
| Package Contents | VG3456, Power Cable, HDMI cable, USB Type C cable, USB A/B Cable, Quick Start Guide |
| Recycle/Disposal | Please dispose of in accordance with local, state or federal laws. |
| Warranty | Three-year limited warranty on parts, labor and backlight |

UPC: 766907011548



Contact Sales
ViewSonic.com
888.881.8781
email: salesinfo@viewsonic.com