

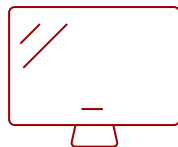
M1-2 - 854 X 480 RESOLUTION, 300 LED LUMENS, 1.2 THROW RATIO

Key Features

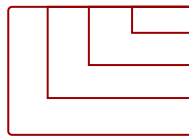
- 360° Projection with Smart Stand
- Dual Harman Kardon Speakers
- Cinema SuperColor+
- Advanced LED Light Source
- Hours of Entertainment
- Winner of the iF Design Award



24 - 100 in. / 0.6 - 2.54 m
DISPLAY



PANEL



1920x1080
RESOLUTION



Product Description

The ViewSonic® M1 is iF Design award-winning, ultra-portable LED projector that delivers convenient entertainment in nearly any location. With a built-in battery and over 30,000 hours of operational life, this projector will deliver years of multimedia entertainment wherever it goes. Weighing less than two pounds, the M1's compact and lightweight design makes it ideal for moving from room to room, or for indoor/outdoor usage. An integrated smart stand provides for simple 360-degree setup, while also doubling as a lens cover. Once the lens is uncovered, the projector automatically powers on with full brightness for instant entertainment. Dual Harman Kardon speakers provide crisp and clear sound for multimedia content, while a short throw lens can display large images in small spaces.

Specifications

UPC	766907000658
Light Source	LED
Display Resolution	WVGA (854x480)
Display Resolution	854 x 480
Brightness (Lumens)	300 LED
Screen Size	24 - 100 in. / 0.6 - 2.54 m
Throw Distance	0.64m-2.66m (38"@1m)
Throw Ratio	1.2
Keystone	Vertical (+/- 40°)
Lens	Fixed Zoom
Light Source (watt)	RGB LED
Light Source Life, Normal (hours)	30000
Light Source Life, Dynamic Eco-Mode (hours)	30000
Color Depth	1.07B Color (R/G/B 10bit)
Dynamic Contrast Ratio	120,000:1
Aspect Ratio	16:9
Input Lag	37ms
Frequency Horizontal	15K-102KHz
Frequency Vertical	23-120Hz
PC Resolution (max)	1920x1080
PC Resolution (min)	640 x 480
Mac® Resolution (max)	1920x1080
Mac® Resolution (min)	640 x 480
USB 2.0 Type A	1
USB 3.1 Type C	1
Card Reader	Micro SD
3.5mm Audio Out	1
HDMI 1.4 (with HDCP 1.4)	1
Internal Speakers	3W (x2)
Voltage	Power adaptor: Input: 100~240V Output: 19VDC / 3.42A Battery: 12000mAh(4000mAh 3.7Vx3) (2.5hrs@Normal, 3hrs@Eco)
Consumption (typical)	35W
Stand-by	<0.5W
Physical Controls	Power, keystone/arrow keys, left/blank, menu/exit, right/panel key lock, mode/enter, auto, source
On Screen Display	Display, Image, Power Management, Basic, Advanced, System, Information (See user guide for full OSD functionality)

Temperature	32-104° F (0 - 40° C)
Humidity (non-condensing)	0-90%
Net (lbs)	1.5
Gross (lbs)	3.7
Net (kg)	0.7
Gross (kg)	1.7
Packaging (in.)	8.6 x 7.5 x 4.7
Physical (in.)	5.9 x 5.0 x 1.6
Packaging (mm)	219.0 x 190.0 x 119.0
Physical (mm)	151.0 x 126.0 x 40.0
Regulations	FCC, cTUVus, ROHS
Package Contents	M1-2 Projector, Power Cable, Remote Control, USB-C Cable, Quick Start Guide
Recycle/Disposal	Please dispose of in accordance with local, state or federal laws.
Portability	Portable

UPC: 766907000658



Contact Sales
ViewSonic.com
 888.881.8781
 email:
salesinfo@viewsonic.com