

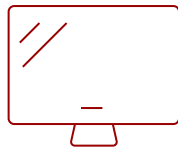
# XG270Q - 27" ELITE 1440P 1MS 165HZ IPS G-SYNC COMPATIBLE GAMING MONITOR

## Key Features

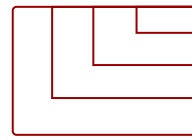
- 165Hz Refresh Rate
- Ultra-Fast Response Time
- NVIDIA G-SYNC Compatible
- Wide Quad HD Resolution
- ELITE RGB



27"  
DISPLAY



IPS  
PANEL



2560 x 1440  
RESOLUTION



## Product Description

The ViewSonic® ELITE XG270Q is a 27" IPS G-SYNC compatible gaming monitor capable of achieving a true 1ms (GtG) response time. With its 165Hz\* refresh rate and NVIDIA G-SYNC technology, this groundbreaking monitor ensures smooth and uninterrupted gameplay for even the fastest scenarios. This IPS panel boasts a VESA DisplayHDR 400 certification and 2560x1440 (QHD) resolution that brings games to life with vibrant colors and sharp in-game details. The XG270Q monitor also includes ELITE design enhancements that improve organization and elevate a gamer's setup. These enhancements include a built-in mouse bungee, headphone hook, ELITE RGB ambient lighting, and an ultra-thin brushed aluminum base.

\*165Hz refresh rate with DisplayPort

## Specifications

	More Information
<b>UPC</b>	766907008272
<b>Screen Size</b>	27"
<b>Viewable Area (in.)</b>	27
<b>Panel Type</b>	IPS
<b>Display Resolution</b>	2560 x 1440
<b>Display Resolution</b>	WQHD (2560x1440)
<b>Static Contrast Ratio</b>	1,000:1
<b>Dynamic Contrast Ratio</b>	120,000,000:1
<b>Light Source</b>	LED

<b>Brightness</b>	400 cd/m2
<b>Colors</b>	1.07B
<b>Color Space Support</b>	10 bit (8 bit + FRC)
<b>Aspect Ratio</b>	16:9
<b>Response Time (Typical GTG)</b>	1ms
<b>Viewing Angles</b>	178° horizontal, 178° vertical
<b>Backlight Life (Hours)</b>	30,000
<b>Panel Surface</b>	Anti-Glare type, Hard-coating (3H), Haze 25%
<b>Refresh Rate</b>	165Hz
<b>Adaptive Sync</b>	NVIDIA G-Sync
<b>PC Resolution (max)</b>	2560 x 1440
<b>Mac® Resolution (max)</b>	2560 x 1440
<b>USB 3.2 Gen 1 Type A</b>	3
<b>USB 3.2 Gen 1 Type B</b>	1
<b>3.5mm Audio Out</b>	1
<b>HDMI 2.0 In</b>	2
<b>DisplayPort</b>	1
<b>Internal Speakers</b>	3W (x2)
<b>Eco Mode (Conserve)</b>	34W
<b>Eco Mode (optimized)</b>	42W
<b>Consumption (typical)</b>	80W
<b>Consumption (max)</b>	90W
<b>Voltage</b>	100-240 VAC
<b>Stand-by</b>	0.5W
<b>Power Supply</b>	External
<b>Cable Organization</b>	No
<b>Kensington Lock Slot</b>	1
<b>Physical Controls</b>	Joystick key: Up, Right, Down, Left, Center; Quick Access; Power
<b>On Screen Display</b>	Game Modes, Display, Input Select, ViewMode, Audio Adjust, Setup Menu
<b>Temperature</b>	32-104° F (0 - 40° C)
<b>Humidity (non-condensing)</b>	20-90%
<b>VESA Compatible</b>	100 x 100 mm
<b>Frequency Horizontal</b>	HDMI (v2.0): 30 ~ 230 KHz, DisplayPort (v1.4): 30 ~ 250 KHz
<b>Frequency Vertical</b>	HDMI (v2.0): 48 ~ 144 KHz, DisplayPort (v1.4): 48 ~ 165 KHz
<b>Digital Sync</b>	TMDS for HDMI (v2.0), PCI-E for DisplayPort (v1.4)
<b>Height Adjust</b>	115 mm / 4.5 in

<b>Swivel</b>	30°
<b>Pivot (Right/Left)</b>	90° / 90°
<b>Tilt (Forward/Back)</b>	5° / 20°
<b>Regulations</b>	cTUVus, FCC-B, ICES003, CEC, NRCAN, MX-CoC, Mexico Energy
<b>Net (lbs)</b>	17.4
<b>Net Without Stand (lbs)</b>	10.1
<b>Gross (lbs)</b>	26.3
<b>Net (kg)</b>	7.9
<b>Net Without Stand (kg)</b>	4.6
<b>Gross (kg)</b>	12.0
<b>Packaging (in.)</b>	28.6 x 20.0 x 11.0
<b>Physical (in.)</b>	24.2 x 18.06~22.5 x 10.4
<b>Physical Without Stand (in.)</b>	24.2 x 14.6 x 2.7
<b>Packaging (mm)</b>	726.0 x 507.0 x 280.0
<b>Physical (mm)</b>	614.0 x 458.7~571.6 x 265.0
<b>Physical Without Stand (mm)</b>	614.0 x 370.0 x 68.0
<b>Package Contents</b>	XG270Q Display, 1 x Power Cable, 1 x AC/DC Adapter, 1 x DisplayPort Cable, 1 x USB A/B Cable, 1 x Quick Start Guide
<b>Recycle/Disposal</b>	Please dispose of in accordance with local, state or federal laws.

UPC: 766907008272



## Contact Sales

[ViewSonic.com](http://ViewSonic.com)

888.881.8781

email: [salesinfo@viewsonic.com](mailto:salesinfo@viewsonic.com)