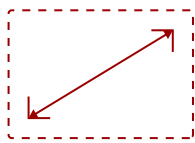


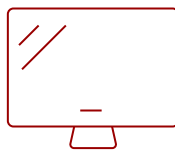
IFP8650-E4 - 86" 4K TOUCH ENABLED VIEWBOARD SMART DISPLAY WITH WIFI ADAPTER AND SLIM TROLLEY CART

Key Features

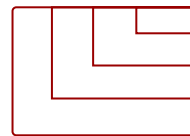
- **ULTRA HD RESOLUTION:** 86 Inch 4K Ultra HD (3840x2160p) interactive display
- **ADVANCED TOUCH:** 40-point multi-touch lets users write on the display with their fingers and stylus pens
- **INTEGRATED SOFTWARE:** The myViewBoard suite includes Whiteboard, ViewBoard Cast, and more for better engagement
- **BETTER SOUND:** Built-in 40W stereo soundbar delivers optimal sound
- **FLEXIBLE CONNECTIVITY:** Powerful quad-core processor and versatile connectivity options with 65W PD USB-C (HDMI, RJ45, and USB ports)
- **EVERYTHING TO GET STARTED:** This bundle includes the interactive display, wireless AC adapter and slim mobile cart
- **REMOTE MANAGEMENT:** Schedule updates and monitor device status with the built-in myViewBoard® Manager software
- **PEACE OF MIND:** Industry-leading 3-year standard warranty with optional extensions and robust support services



86
DISPLAY



PANEL



RESOLUTION

Product Description

Ideal for education environments, this all-in-one ViewBoard Bundle includes a 86" ViewBoard IFP8650 4K interactive flat panel, a wireless AC adapter, and a VB-STND-005 slim trolley cart.

Specifications

More Information


Screen Size	86
Viewable Area (in.)	86
Light Source	LED
Display Resolution	3840 x 2160

Refresh Rate	60Hz
Aspect Ratio	16:9
Static Contrast Ratio	1,200:1
Dynamic Contrast Ratio	5,000:1
Brightness	350 cd/m2
Response Time (Typical GTG)	8ms
Viewing Angles	178° horizontal, 178° vertical
Panel Surface	9H
Operation Rating	16/7
Ethernet LAN	(10/100/1000M) (Android 10/100, PC 10/100/1000)
OS	ViewBoard OS (embedded Android 8)
GPU	ARM Mali0G51
CPU	ARM Quad Core A73 + A53
CPU Processor Speed	A73: 1.1GHz, A53: 1.5GHz
Memory	3GB
Storage	32GB
Internal Speakers	10W (x2)
Subwoofer	15W (x1)
HDMI 2.0 In	3
VGA	1
3.5mm Audio In	1
3.5mm Audio Out	1
SPDIF Audio Out	1
USB 3.0	4
USB 2.0	3
Slot-in PC Slot	1
USB B Touch Port	2
RS232	1
Ethernet LAN (RJ45)	1
WIFI Module Slot	1
Intel® OPS Slot In (80-pin)	1
Voltage	100-240 VAC
Consumption (max)	350W
Consumption (typical)	155W
Stand-by	<0.5W
On Screen Display	Input, Volume, Backlight, Audio, Screen, Display, Adjust

Remote Control	Volume, Channel, Source, Mute, Back, Input, Menu
Temperature	32-104° F (0 - 40° C)
Humidity (non-condensing)	10-90%
Touch Technology	Infrared
Touch Points	Windows: 20, Android: 20
Tip Detection	Dual tips, 3mm and 8mm
Net (lbs)	242.9
Gross (lbs)	305.8
Net (kg)	110.2
Gross (kg)	138.7
Packaging (in.)	83.6 x 53.0 x 11.0
Physical (in.)	77.1 x 45.7 x 3.5
Packaging (mm)	2123.0 x 1345.0 x 280.0
Physical (mm)	1958.0 x 160.0 x 90.0
VESA Compatible	800 x 600 mm
Warranty	3-year limited warranty on parts, labor and backlight, onsite warranty
Recycle/Disposal	Please dispose of in accordance with local, state or federal laws.
Package Contents	IFP8650 display, WiFi Card, stylus pen x 2, power cable, remote control with batteries, ViewSonic Wizard CD (User Guide), Quick Start Guide
Regulations	cTUVus, FCC, ENERGY STAR, Mexico Energy, CE, CB, RoHS, ErP, WEEE

Contact Sales

ViewSonic.com

888.881.8781 

email: salesinfo@viewsonic.com 