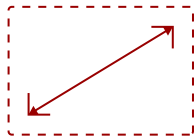


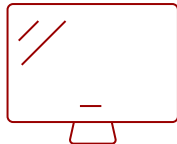
IFP8650 - 86" 4K TOUCH ENABLED VIEWBOARD SMART DISPLAY

Key Features

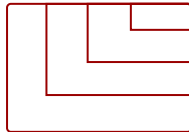
- Everything within Reach
- Enhanced Touchscreen Performance
- myViewBoard™ Annotation Software
- ViewBoard Cast Content Sharing Software
- Enhanced Viewing Comfort
- SmartPort USB™



86
DISPLAY



PANEL



RESOLUTION



Product Description

Featuring 4K Ultra HD resolution and an advanced, next-generation touchscreen, the ViewSonic® ViewBoard® IFP8650 delivers incredible collaborative capabilities for 21st century boardrooms and classrooms. With integrated myViewBoard® annotation software and ViewBoard Cast streaming software, content creation and sharing has never been easier. What's more, this ENERGY STAR certified display delivers optional slot-in PC capability for more computing-intensive interactive applications. A VESA-compatible design allows for installation on a wall mount, or on an optional trolley cart for more flexible installation in classrooms and meeting rooms.

Specifications

[More Information](#)

UPC

766907002485

OS	ViewBoard OS (embedded Android 8)
CPU	ARM Quad Core A73 + A53
CPU Processor Speed	A73: 1.1GHz, A53: 1.5GHz
Memory	3GB
Storage	32GB
Internal Speakers	10W (x2)
Subwoofer	15W (x1)
HDMI 2.0 In	3
VGA	1
3.5mm Audio In	1
3.5mm Audio Out	1
SPDIF Audio Out	1
USB 3.0	4
USB 2.0	3
Slot-in PC Slot	1
USB B Touch Port	2
RS232	1
Ethernet LAN (RJ45)	1
WIFI Module Slot	1
Intel® OPS Slot In (80-pin)	1
Voltage	100-240 VAC
Consumption (max)	350W
Consumption (typical)	155W
Temperature	32-104° F (0 - 40° C)
Humidity (non-condensing)	10-90%
Touch Technology	Infrared
Touch Points	Windows: 20, Android: 20
Tip Detection	Dual tips, 3mm and 8mm
Net (lbs)	153.7
Gross (lbs)	202.8
Net (kg)	69.7
Gross (kg)	92.0
Packaging (in.)	83.6 x 53.0 x 11.0
Physical (in.)	77.1 x 45.7 x 3.5
Packaging (mm)	2123.0 x 1345.0 x 280.0
Physical (mm)	1958.0 x 1160.0 x 90.0

VESA Compatible	800 x 600 mm
Warranty	3-year limited warranty on parts, labor and backlight, onsite warranty
Recycle/Disposal	Please dispose of in accordance with local, state or federal laws.
Package Contents	IFP8650 display, stylus pen x 2, power cable, HDMI cable, USB cable, remote control with batteries, Camera plate, M8 screw x 8, Quick Start Guide
Regulations	cTUVus, FCC, ENERGY STAR, Mexico Energy, CE, CB, RoHS, ErP, WEEE
Ethernet LAN	(10/100/1000M) (Android 10/100, PC 10/100/1000)
Display Type	LCD
Screen Size	86
Viewable Area (in.)	85.6
Light Source	LED
Display Resolution	3840 x 2160
Refresh Rate	60Hz
Aspect Ratio	16:9
Static Contrast Ratio	1,200:1
Dynamic Contrast Ratio	5,000:1
Backlight Life (Hours)	50,000
Brightness	350 cd/m2
Response Time (Typical GTG)	8ms
Viewing Angles	178° horizontal, 178° vertical
Panel Surface	9H
Operation Rating	16/7

UPC: 766907002485



Contact Sales

ViewSonic.com

888.881.8781

email:

salesinfo@viewsonic.com