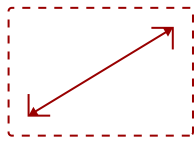


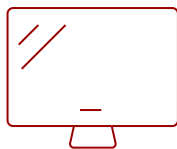
## Key Features

---

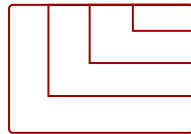
- Everything within Reach
- Enhanced Touchscreen Performance
- myViewBoard™ Annotation Software
- ViewBoard Cast Content Sharing Software
- Enhanced Viewing Comfort
- SmartPort USB™



65  
**DISPLAY**



**PANEL**



**RESOLUTION**



## Product Description

---

Featuring 4K Ultra HD resolution and an advanced, next-generation touchscreen, the ViewSonic® ViewBoard® IFP6550 delivers incredible collaborative capabilities for 21st century boardrooms and classrooms. With integrated myViewBoard® annotation software and ViewBoard Cast streaming software, content creation and sharing has never been easier. What's more, this ENERGY STAR certified display delivers optional slot-in PC capability for more computing-intensive interactive applications. A VESA-compatible design allows for installation on a wall mount, or on an optional trolley cart for more flexible installation in classrooms and meeting rooms.

## Specifications

---

### More Information

**Display Type**


LCD

<b>Display Size (in.)</b>	65
<b>Viewable Area (in.)</b>	65
<b>Light Source</b>	LED
<b>Resolution</b>	3840 x 2160
<b>Refresh Rate (Hz)</b>	60
<b>Aspect Ratio</b>	16:9
<b>Static Contrast Ratio</b>	1,200:1
<b>Dynamic Contrast Ratio</b>	5,000:1
<b>Backlight Life (Hours)</b>	50,000
<b>Brightness</b>	350 cd/m2
<b>Viewing Angles</b>	178° horizontal, 178° vertical
<b>Panel Surface</b>	9H
<b>Operation Rating</b>	16/7
<b>Ethernet LAN</b>	10/100/1000 Mbps
<b>OS</b>	ViewBoard OS (embedded Android 8)
<b>GPU</b>	ARM Mali-G51
<b>CPU</b>	ARM Quad Core A73 + A53
<b>CPU Processor Speed</b>	A73: 1.1GHz, A53: 1.5GHz
<b>Memory</b>	3GB
<b>Storage</b>	32GB
<b>Internal Speakers</b>	10W (x2)
<b>Subwoofer</b>	15W (x1)
<b>HDMI 2.0 In</b>	3
<b>VGA</b>	1
<b>Composite RCA</b>	1
<b>3.5mm Audio In</b>	1
<b>3.5mm Audio Out</b>	1
<b>SPDIF Audio Out</b>	1
<b>USB 3.0</b>	4
<b>USB 2.0</b>	3
<b>Slot-in PC Slot</b>	1
<b>USB B Touch Port</b>	2
<b>RS232</b>	1
<b>Ethernet LAN (RJ45)</b>	1
<b>WIFI Module Slot</b>	1
<b>Voltage</b>	100-240 VAC

<b>Consumption (max)</b>	350W
<b>Consumption (typical)</b>	104W
<b>Stand-by</b>	<0.5W
<b>Temperature</b>	32-104° F (0 - 40° C)
<b>Humidity (non-condensing)</b>	10-90%
<b>Touch Technology</b>	Infrared
<b>Touch Points</b>	20-Point Touch
<b>Tip Detection</b>	Dual tips, 3mm and 8mm
<b>Net (lbs)</b>	88.9
<b>Gross (lbs)</b>	102.6
<b>Net (kg)</b>	40.0
<b>Gross (kg)</b>	47.0
<b>Packaging (in.)</b>	65.7 x 39.8 x 8.8
<b>Physical (in.)</b>	58.6 x 35.3 x 3.5
<b>Packaging (mm)</b>	1669.0 x 1010.0 x 223.0
<b>Physical (mm)</b>	1488.0 x 897.0 x 90.0
<b>VESA Compatible</b>	600 x 400 mm
<b>Warranty</b>	3-year limited warranty on parts, labor and backlight, onsite warranty
<b>Recycle/Disposal</b>	Please dispose of in accordance with local, state or federal laws.
<b>PACKAGE CONTENTS</b>	IFP6550 display, stylus pen x 2, power cable, HDMI cable, USB cable, remote control with batteries, Camera plate, M8 screw x 8, Quick Start Guide
<b>Regulations</b>	cTUVus, FCC, ENERGY STAR, Mexico Energy, CE, CB, RoHS, ErP, WEEE



**Contact Sales**  
[ViewSonic.com](http://ViewSonic.com)

888.881.8781   
email:  
[salesinfo@viewsonic.com](mailto:salesinfo@viewsonic.com)