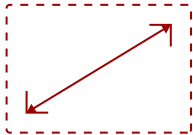


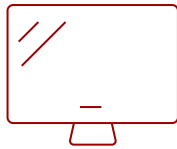
EP5520-S

## Key Features

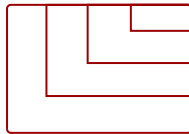
---



55"  
DISPLAY



PANEL



RESOLUTION



## Product Description

---

The ViewSonic® EP5520 is a 55" all-in-one free-standing digital ePoster kiosk with a sleek, slim design. Great for grabbing attention in busy, high-traffic areas, the EP5520 comes with a scratch-proof tempered glass faceplate for added durability. Featuring Full HD 1080p resolution, 176°/176° wide-angle viewing, 400-nit brightness, 4,000:1 contrast ratio, and dual 10W stereo speakers, the EP5520 delivers customized multimedia messaging with vivid clarity. Photo and video files can be played back using the embedded Quad-core media player and 16GB of internal memory, or add your own media player using the convenient media player cradle inside the lockable security door.

## Specifications

---

### More Information

UPC	766907893816
Screen Size	55"
Viewable Area (in.)	55

<b>Display Resolution</b>	1920 x 1080
<b>Light Source</b>	DLED
<b>Orientation</b>	Portrait
<b>Static Contrast Ratio</b>	4,000:1
<b>Brightness</b>	400 cd/m2
<b>Viewing Angles</b>	178° horizontal, 178° vertical
<b>Backlight Life (Hours)</b>	30,000
<b>Response Time (Typical GTG)</b>	8ms
<b>Panel Surface</b>	7H/ 5mm Tempered glass
<b>Aspect Ratio</b>	16:9
<b>Internal Speakers</b>	10W (x2)
<b>3.5mm Audio In</b>	1
<b>Ethernet LAN (RJ45)</b>	1
<b>HDMI 1.4 In</b>	2
<b>VGA</b>	1
<b>Control (RS232)</b>	1
<b>USB 2.0 Type A</b>	3
<b>USB 2.0 Type B</b>	1
<b>CPU</b>	USB Supported internal media player
<b>Built-in Software</b>	OSD / Remote Control
<b>Voltage</b>	100-240 VAC
<b>Consumption (typical)</b>	115W
<b>Stand-by</b>	<.5W
<b>Temperature</b>	32-104° F (0 - 40° C)
<b>Humidity (non-condensing)</b>	20-80%
<b>Gross (lbs)</b>	183
<b>Net (lbs)</b>	150
<b>Gross (kg)</b>	83
<b>Net Without Stand (kg)</b>	68
<b>Packaging (in.)</b>	38.7 x 79.3 x 24.3
<b>Physical (in.)</b>	32.2 x 74.8 x 17.7
<b>Packaging (mm)</b>	983 x 2016 x 618
<b>Physical (mm)</b>	812 x 1900 x 450
<b>On Screen Display</b>	Picture Mode, Contrast, Brightness, Hue, Sharpness, Saturation, Anti-Flicker, Backlight, Screen, Color temperature, Bluelight Filter, Zoom Mode, OverScan, Image NR
<b>Remote Control</b>	Sound Mode, Bass, Treble, Balance, Surround, Alone, MHL Auto Switch, Menu Timeout, Data/Time, Off Timer, On Timer, Sleep Time, Set Password, System ID, Lock Keypad, LowerPower Standby, Restore To Default

**Regulations**

FCC/cTUVus /TUV-Mexico CoC/Mexico Energy/CE EMC/CB/ErP/PSB/RCM/BSMI

**Package Contents**

Power Cord, Remote control with battery, Quick start guide, User's Guide, Door key

**Recycle/Disposal**

Please dispose of in accordance with local, state or federal laws.

**Warranty**

\*Refurbished. 30-day DOA policy for full refund, with a 90-day repair warranty on parts and labor.

**Classification**


Discontinued

UPC: 766907893816



**Contact Sales**

[ViewSonic.com](http://ViewSonic.com)

888.881.8781 

email:

[salesinfo@viewsonic.com](mailto:salesinfo@viewsonic.com)

